

## Product datasheet for **TA590844**

### Cytohesin 3 (CYTH3) Rabbit Polyclonal Antibody

#### Product data:

Product Type:	Primary Antibodies
Applications:	ELISA
Recommended Dilution:	WB 1:5000~20000,ELISA 1:100-1:2000
Reactivity:	Human, Dog, Rat, Monkey, Mouse
Host:	Rabbit
Isotype:	IgG
Clonality:	Polyclonal
Immunogen:	DNA immunization. This antibody is specific for the N Terminus Region of the target protein.
Formulation:	20 mM Potassium Phosphate, 150 mM Sodium Chloride, pH 7.0
Concentration:	0.9mg/ml
Purification:	Purified from mouse ascites fluids or tissue culture supernatant by affinity chromatography (protein A/G)
Conjugation:	Unconjugated
Storage:	Store at -20°C as received.
Stability:	Stable for 12 months from date of receipt.
Gene Name:	cytohesin 3
Database Link:	<a href="#">NP_004218</a> <a href="#">Entrez Gene 19159 Mouse</a> <a href="#">Entrez Gene 116693 Rat</a> <a href="#">Entrez Gene 609100 Dog</a> <a href="#">Entrez Gene 717713 Monkey</a> <a href="#">Entrez Gene 9265 Human</a> <a href="#">O43739</a>

**Background:** GRP1 (general receptor for 3-phosphoinositides) is composed of an N-terminal heptad repeat, an Arf exchange domain with homology to the yeast Sec7 protein, a PH domain, and a C-terminal polybasic region (1). The PH domain of GRP1 binds PtdIns(3, 4, 5)P<sub>3</sub> with high affinity, but not PtdIns(3, 4)P<sub>2</sub> or PtdIns(3)P, potentially making it a target for PI-3-kinase. Furthermore, GRP1 acts as a nucleotide exchange factor for the small GTP proteins of the ARF family (2). While GRP1 catalyses guanine-nucleotide exchange specifically on ARF5; other GRP1 homologues (ARNO and cytohesin-1) will only function on ARF6 and ARF3 respectively (3).



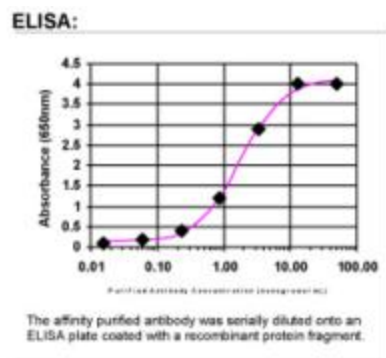
[View online »](#)

**Synonyms:** ARNO3; cytohesin-3; GRP1; PSCD3

**Note:** This antibody was generated by SDIX's Genomic Antibody Technology® (GAT). [Learn about GAT](#)

**Protein Families:** Druggable Genome

**Product images:**



ELISA: Cytohesin 3 Antibody