

## Product datasheet for **TA590834**

### CTP synthase (CTPS1) Rabbit Polyclonal Antibody

#### Product data:

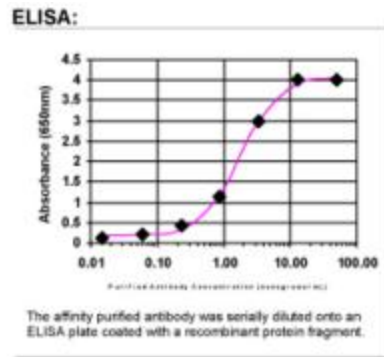
Product Type:	Primary Antibodies
Applications:	ELISA, IF, IHC
Recommended Dilution:	ELISA: 1:100-1:2000; IHC: 1:10-1:2000; IHC-P 1:10-1:2000
Reactivity:	Human
Host:	Rabbit
Isotype:	IgG
Clonality:	Polyclonal
Immunogen:	DNA immunization. This antibody is specific for the C Terminus Region of the target protein.
Formulation:	20 mM Potassium Phosphate, 150 mM Sodium Chloride, pH 7.0
Concentration:	1.06mg/ml
Purification:	Purified from mouse ascites fluids or tissue culture supernatant by affinity chromatography (protein A/G)
Conjugation:	Unconjugated
Storage:	Store at -20°C as received.
Stability:	Stable for 12 months from date of receipt.
Gene Name:	CTP synthase 1
Database Link:	<a href="#">NP_001896</a> <a href="#">Entrez Gene 1503 Human</a> <a href="#">P17812</a>
Background:	The catalytic conversion of UTP to CTP is accomplished by the enzyme cytidine-5-prime-triphosphate synthetase. The enzyme is important in the biosynthesis of phospholipids and nucleic acids, and plays a key role in cell growth, development, and tumorigenesis. The region to which the CTPS gene has been mapped is the location of breakpoints involved in several tumor types
Synonyms:	CTPS; IMD24
Note:	This antibody was generated by SDIX's Genomic Antibody Technology® (GAT). <a href="#">Learn about GAT</a>



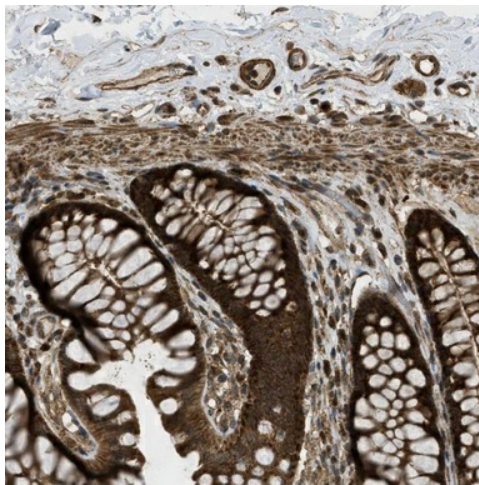
[View online »](#)

Protein Pathways: Metabolic pathways, Pyrimidine metabolism

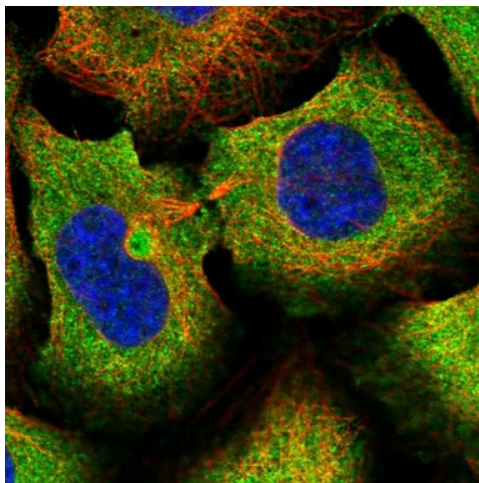
**Product images:**



ELISA: CTP synthase Antibody



Immunohistochemical staining of human colon shows strong cytoplasmic positivity in glandular cells. Antibody dilution:1:300. Image and statement courtesy of the Human Protein Atlas (HPA).



Immunofluorescent staining of human cell line U-2 OS shows positivity in cytoplasm. Antibody dilution: 1:75. Image and statement courtesy of the Human Protein Atlas (HPA).