

Product datasheet for **TA590833**

EVI1 (MECOM) Rabbit Polyclonal Antibody

Product data:

Product Type:	Primary Antibodies
Applications:	ELISA
Recommended Dilution:	WB: 1:5000-1:20000; ELISA: 1:100-1:2000; IHC: 1:10-1:2000; IHC-P 1:250-1:2000
Reactivity:	Human
Host:	Rabbit
Isotype:	IgG
Clonality:	Polyclonal
Immunogen:	DNA immunization. This antibody is specific for the N Terminus Region of the target protein.
Formulation:	20 mM Potassium Phosphate, 150 mM Sodium Chloride, pH 7.0
Concentration:	0.79124 mg/ml
Purification:	Purified from mouse ascites fluids or tissue culture supernatant by affinity chromatography (protein A/G)
Conjugation:	Unconjugated
Storage:	Store at -20°C as received.
Stability:	Stable for 12 months from date of receipt.
Gene Name:	MDS1 and EVI1 complex locus
Database Link:	NP_001098547 Entrez Gene 2122 Human Q03112
Background:	EVI1 (ecotropic viral integration site 1) was originally identified as a gene located in the integration site of ecotropic retroviruses in the mouse genome that resulted in myeloid tumors. EVI1 is a zinc finger transcription factor that plays an important role in development and leukemogenesis. It is an oncogene that can have effects on cell proliferation, differentiation, and apoptosis. Chromosomal translocations involving EVI1 result in chronic myelogenous leukemia (CML). Alternate names for EVI1 include AML1-EVI-1 fusion protein, PRDM3, and MDS1-EV1.
Synonyms:	AML1-EVI-1; EVI1; MDS1; MDS1-EVI1; PRDM3



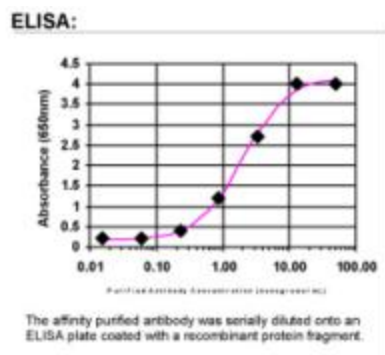
[View online »](#)

Note: This antibody was generated by SDIX's Genomic Antibody Technology® (GAT). [Learn about GAT](#)

Protein Families: Druggable Genome, Transcription Factors

Protein Pathways: Chronic myeloid leukemia, MAPK signaling pathway, Pathways in cancer

Product images:



ELISA: EV11 Antibody