

Product datasheet for **TA590815**

BRCA2 Rabbit Polyclonal Antibody

Product data:

Product Type:	Primary Antibodies
Applications:	ELISA
Recommended Dilution:	ELISA: 1:100-1:2000
Reactivity:	Human
Host:	Rabbit
Isotype:	IgG
Clonality:	Polyclonal
Immunogen:	DNA immunization. This antibody is specific for the C Terminus Region of the target protein.
Formulation:	20 mM Potassium Phosphate, 150 mM Sodium Chloride, pH 7.0
Concentration:	1.01825 mg/ml
Purification:	Purified from mouse ascites fluids or tissue culture supernatant by affinity chromatography (protein A/G)
Conjugation:	Unconjugated
Storage:	Store at -20°C as received.
Stability:	Stable for 12 months from date of receipt.
Gene Name:	BRCA2 DNA repair associated
Database Link:	NP_000050 Entrez Gene 675 Human P51587
Background:	BRCA 2 is localized to chromosome 13q12 - q13. Loss of heterozygosity of 13q is observed in 25% of sporadic breast tumors, which indicates that BRCA 2 might be a tumor suppressor gene. BRCA 2 confers only a low ovarian cancer risk. Reportedly, in MCF-10F (normal breast epithelial cell line) and MCF-7 (breast cancer cell line) cells the expression of BRCA 2 RNA lowers in G0 and early G1 phases then gets up-regulated at the G1 / S phase junction.
Synonyms:	BRCC2; BROVCA2; FACD; FAD; FAD1; FANCD; FANCD1; GLM3; PNCA2; XRCC11
Note:	This antibody was generated by SDIX's Genomic Antibody Technology® (GAT). Learn about GAT

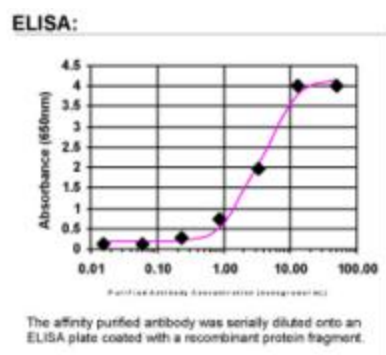


[View online »](#)

Protein Families: Druggable Genome

Protein Pathways: Homologous recombination, Pancreatic cancer, Pathways in cancer

Product images:



ELISA: BRCA2 Antibody