

Product datasheet for **TA590808**

FANCC Rabbit Polyclonal Antibody

Product data:

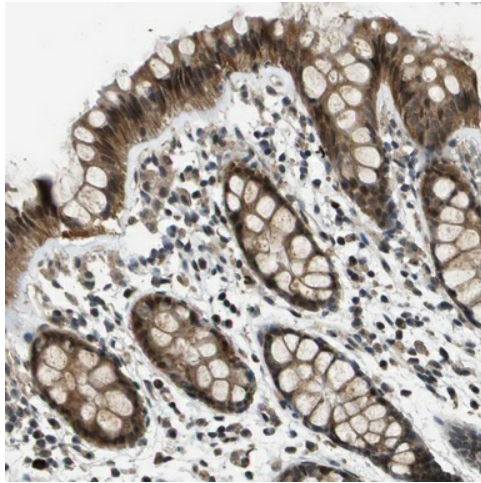
Product Type:	Primary Antibodies
Applications:	ELISA, IF, IHC
Recommended Dilution:	ELISA: 1:100-1:2000; IHC: 1:90; IF: 1:23
Reactivity:	Human
Host:	Rabbit
Isotype:	IgG
Clonality:	Polyclonal
Immunogen:	DNA immunization. This antibody is specific for the N Terminus Region of the target protein.
Formulation:	20 mM Potassium Phosphate, 150 mM Sodium Chloride, pH 7.0
Concentration:	1.22mg/ml
Purification:	Purified from mouse ascites fluids or tissue culture supernatant by affinity chromatography (protein A/G)
Conjugation:	Unconjugated
Storage:	Store at -20°C as received.
Stability:	Stable for 12 months from date of receipt.
Gene Name:	FA complementation group C
Database Link:	NP_000127 Entrez Gene 2176 Human Q00597
Background:	Fanconi Anemia Group C Protein is a DNA repair protein. It may function as a cell cycle check point or in post replication repair. FANCC may be important for the maintenance of chromosome stability and reparation of interstrand DNA cross linkages. Defects in this protein result in a disease state, Fanconi anemia, an autosomal recessive disorder. Fanconi anemia results in many congenital malformations and predisposition to malignant formations.
Synonyms:	FA3; FAC; FACC
Note:	This antibody was generated by SDIX's Genomic Antibody Technology® (GAT). Learn about GAT



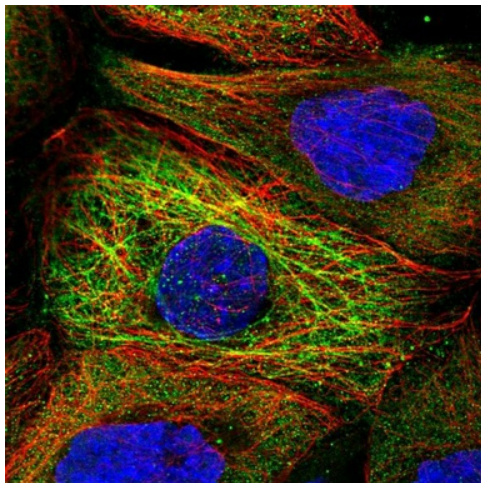
[View online »](#)

Protein Families: Druggable Genome

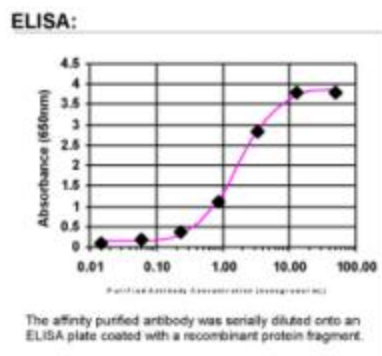
Product images:



Immunohistochemical staining of human rectum shows nuclear and cytoplasmic positivity in glandular cells. This validation was performed by Protein Atlas and the presentation of data is for informational purposes only.



Immunofluorescent staining of human cell line A-431 shows positivity in nucleus but not nucleoli, cytoplasm & cytoskeleton (intermediate filaments). This validation was performed by Protein Atlas and the presentation of data is for informational purposes only.



ELISA: FANCC Antibody