

Product datasheet for **TA590795**

PMS2 Rabbit Polyclonal Antibody

Product data:

Product Type:	Primary Antibodies
Applications:	ELISA, IHC, WB
Recommended Dilution:	WB 1:20000, IHC 1:150, ELISA 1:100-1:2000
Reactivity:	Human
Host:	Rabbit
Isotype:	IgG
Clonality:	Polyclonal
Immunogen:	DNA immunization. This antibody is specific for the Middle Region of the target protein.
Formulation:	20 mM Potassium Phosphate, 150 mM Sodium Chloride, pH 7.0
Concentration:	0.96mg/ml
Purification:	Purified from mouse ascites fluids or tissue culture supernatant by affinity chromatography (protein A/G)
Conjugation:	Unconjugated
Storage:	Store at -20°C as received.
Stability:	Stable for 12 months from date of receipt.
Gene Name:	PMS1 homolog 2, mismatch repair system component
Database Link:	NP_000526 Entrez Gene 5395 Human P54278
Background:	This gene is one of the PMS2 gene family members found in clusters on chromosome 7. The product of this gene is involved in DNA mismatch repair. It forms a heterodimer with MLH1 and this complex interacts with other complexes bound to mismatched bases. Mutations in this gene are associated with hereditary nonpolyposis colorectal cancer, Turcot syndrome, and are a cause of supratentorial primitive neuroectodermal tumors. Alternatively spliced transcript variants have been observed for this gene.
Synonyms:	HNPCC4; PMS2CL; PMSL2
Note:	This antibody was generated by SDIX's Genomic Antibody Technology® (GAT). Learn about GAT

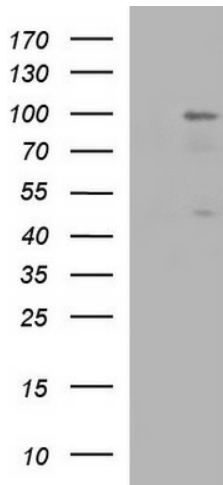


[View online »](#)

Protein Families: Druggable Genome

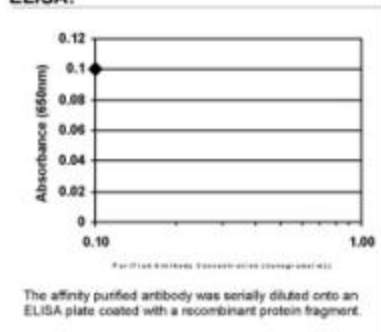
Protein Pathways: Mismatch repair

Product images:

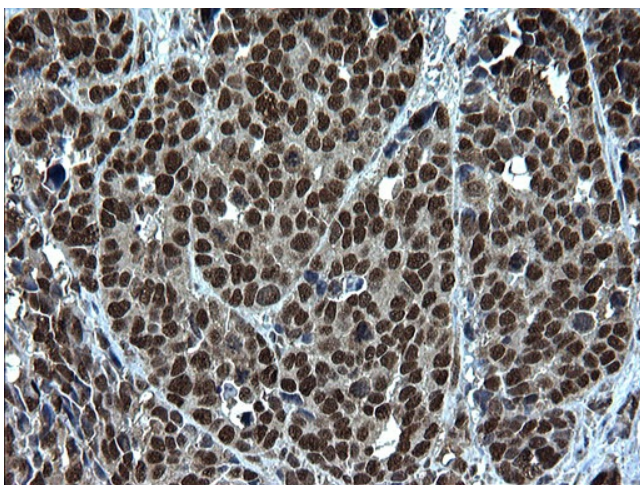


HEK293T cells were transfected with the pCMV6-ENTRY control (Left lane) or pCMV6-ENTRY PMS2 ([RC210880], Right lane) cDNA for 48 hrs and lysed. Equivalent amounts of cell lysates (5 ug per lane) were separated by SDS-PAGE and immunoblotted with anti-PMS2. Positive lysates [LY424658] (100ug) and [LC424658] (20ug) can be purchased separately from OriGene.

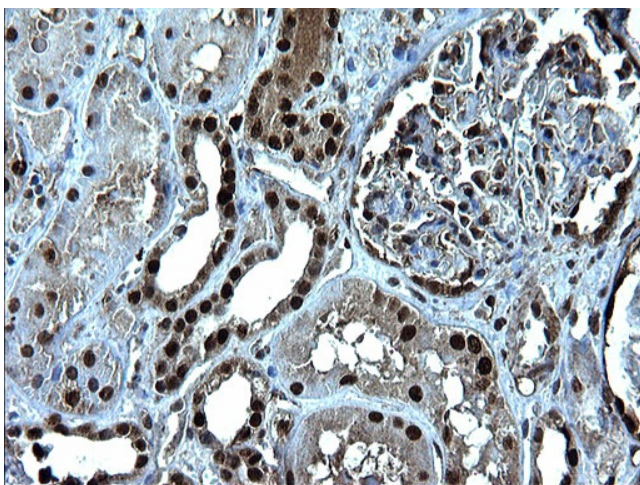
ELISA:



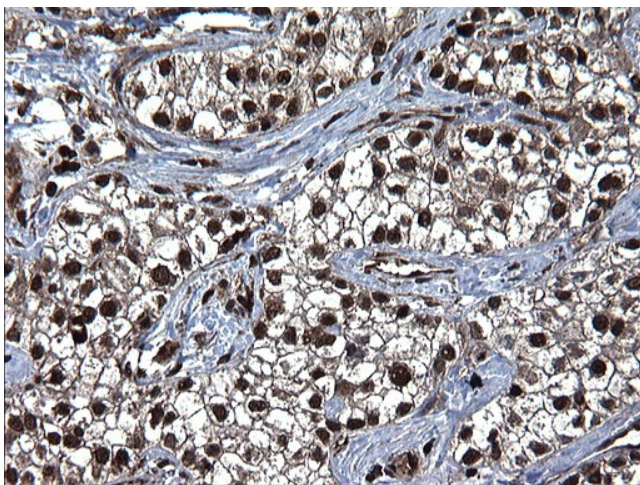
ELISA: PMS2 Antibody



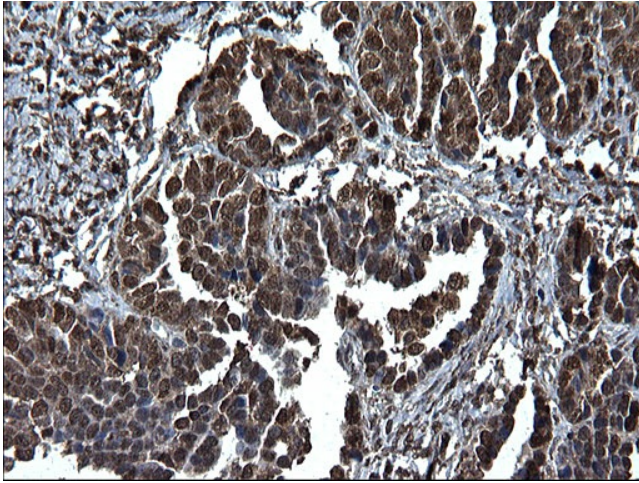
Immunohistochemical staining of paraffin-embedded Adenocarcinoma of Human colon tissue using anti-PMS2 Rabbit Polyclonal antibody. (TA590795)



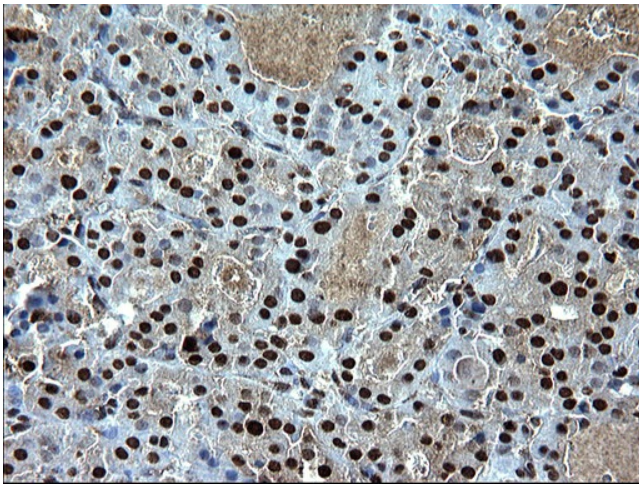
Immunohistochemical staining of paraffin-embedded Human Kidney tissue using anti-PMS2 Rabbit Polyclonal antibody. (TA590795)



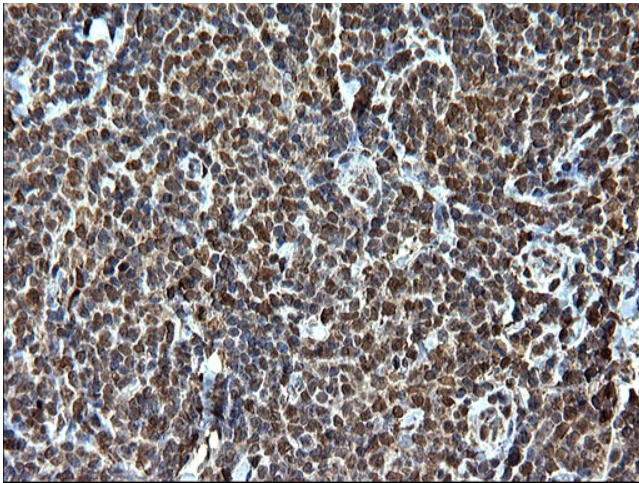
Immunohistochemical staining of paraffin-embedded Carcinoma of Human liver tissue using anti-PMS2 Rabbit Polyclonal antibody. (TA590795)



Immunohistochemical staining of paraffin-embedded Adenocarcinoma of Human ovary tissue using anti-PMS2 Rabbit Polyclonal antibody. (TA590795)



Immunohistochemical staining of paraffin-embedded Carcinoma of Human thyroid tissue using anti-PMS2 Rabbit Polyclonal antibody. (TA590795)



Immunohistochemical staining of paraffin-embedded Human lymphoma tissue using anti-PMS2 Rabbit Polyclonal antibody. (TA590795)