

Product datasheet for **TA590790**

CD55 Rabbit Polyclonal Antibody

Product data:

Product Type:	Primary Antibodies
Applications:	ELISA
Recommended Dilution:	WB: 1:5000-1:20000; ELISA: 1:100-1:2000
Reactivity:	Human
Host:	Rabbit
Isotype:	IgG
Clonality:	Polyclonal
Immunogen:	DNA immunization. This antibody is specific for the C Terminus Region of the target protein.
Formulation:	20 mM Potassium Phosphate, 150 mM Sodium Chloride, pH 7.0
Concentration:	0.99343 mg/ml
Purification:	Purified from mouse ascites fluids or tissue culture supernatant by affinity chromatography (protein A/G)
Conjugation:	Unconjugated
Storage:	Store at -20°C as received.
Stability:	Stable for 12 months from date of receipt.
Gene Name:	CD55 molecule (Cromer blood group)
Database Link:	NP_000565 Entrez Gene 1604 Human P08174
Background:	CD55 (decay-accelerating factor, DAF) is a GPI-anchored membrane glycoprotein that protects autologous cells from classical and alternative pathway of complement cascade. Bidirectional interactions between CD55 and CD97 are involved in T cell regulation and CD55 can still regulate complement when bound to CD97. In tumours, besides protection against complement, CD55 promotes neoangiogenesis, tumorigenesis, invasiveness and evasion of apoptosis.
Synonyms:	CR; CROM; DAF; TC
Note:	This antibody was generated by SDIX's Genomic Antibody Technology® (GAT). Learn about GAT

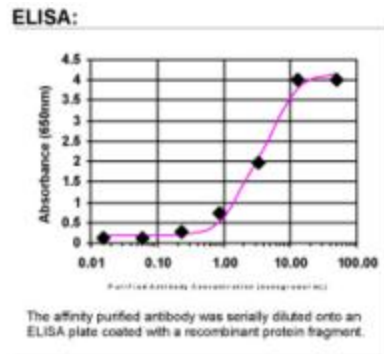


[View online »](#)

Protein Families: Druggable Genome

Protein Pathways: Complement and coagulation cascades, Hematopoietic cell lineage, Viral myocarditis

Product images:



ELISA: CD55 Antibody