

Product datasheet for **TA590785**

eNOS (NOS3) Rabbit Polyclonal Antibody

Product data:

Product Type:	Primary Antibodies
Applications:	ELISA, WB
Recommended Dilution:	WB 1:20000,ELISA 1:100-1:2000
Reactivity:	Human
Host:	Rabbit
Isotype:	IgG
Clonality:	Polyclonal
Immunogen:	DNA immunization. This antibody is specific for the N Terminus Region of the target protein.
Formulation:	20 mM Potassium Phosphate, 150 mM Sodium Chloride, pH 7.0
Concentration:	1.1mg/ml
Purification:	Purified from mouse ascites fluids or tissue culture supernatant by affinity chromatography (protein A/G)
Conjugation:	Unconjugated
Storage:	Store at -20°C as received.
Stability:	Stable for 12 months from date of receipt.
Gene Name:	nitric oxide synthase 3
Database Link:	NP_000594 Entrez Gene 4846 Human P29474



[View online »](#)

Background: Nitric oxide synthase NOS oxidizes a guanidine nitrogen of arginine releasing nitric oxide in the form of a free radical and citrulline. Nitric oxide thus generated acts as a messenger in diverse functions including vasodilation neurotransmission, anti tumor and anti pathogenic activities. NOS is classified under three types: neuronal NOS (nNOS) or brain NOS (bNOS); inducible NOS (iNOS) or macrophage NOS (mNOS); and endothelial NOS (eNOS). eNOS is a calcium/calmodulin dependent enzyme which undergoes several post translational modifications, including acylation with myristate and palmitate, and phosphorylation on numerous residues. As with the other members of the NOS family, eNOS derives the diffusible multifunctional second messenger NO from L arginine through a series of reactions in which L citrulline is an intermediate. eNOS plays an important role in controlling vascular tone, platelet aggregation, and cardiac myocyte function.

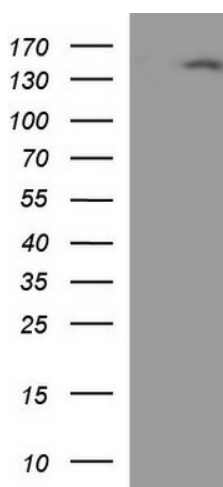
Synonyms: ECNOS; eNOS

Note: This antibody was generated by SDIX's Genomic Antibody Technology® (GAT). [Learn about GAT](#)

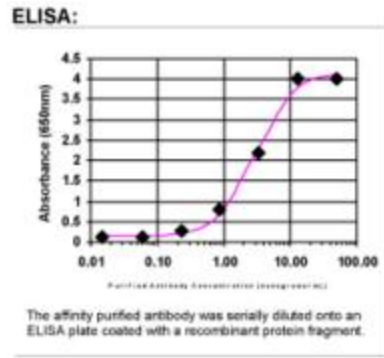
Protein Families: Druggable Genome

Protein Pathways: Alzheimer's disease, Amyotrophic lateral sclerosis (ALS), Arginine and proline metabolism, Calcium signaling pathway, Long-term depression, Metabolic pathways, Pathways in cancer, Small cell lung cancer, VEGF signaling pathway

Product images:



HEK293T cells were transfected with the pCMV6-ENTRY control (Cat# [PS100001], Left lane) or pCMV6-ENTRY NOS3 (Cat# [RC209228], Right lane) cDNA for 48 hrs and lysed. Equivalent amounts of cell lysates (5 ug per lane) were separated by SDS-PAGE and immunoblotted with anti-NOS3 (Cat# TA590785). Positive lysates [LY424613] (100ug) and [LC424613] (20ug) can be purchased separately from OriGene.



ELISA: eNOS Antibody