

## Product datasheet for **TA590783**

### Protein C inhibitor (SERPINA5) Rabbit Polyclonal Antibody

#### Product data:

Product Type:	Primary Antibodies
Applications:	IHC, WB
Recommended Dilution:	WB 1:20000, IHC 1:150, ELISA 1:100-1:2000
Reactivity:	Human
Host:	Rabbit
Isotype:	IgG
Clonality:	Polyclonal
Immunogen:	DNA immunization. This antibody was made against a protein fragment from the Middle Region
Formulation:	20 mM Potassium Phosphate, 150 mM Sodium Chloride, pH 7.0
Concentration:	0.80146 mg/ml
Purification:	Purified from mouse ascites fluids or tissue culture supernatant by affinity chromatography (protein A/G)
Conjugation:	Unconjugated
Storage:	Store at -20°C as received.
Stability:	Stable for 12 months from date of receipt.
Gene Name:	serpin family A member 5
Database Link:	<a href="#">NP_000615</a> <a href="#">Entrez Gene 5104 Human</a> <a href="#">P05154</a>



[View online »](#)

**Background:** PAI-1, PAI-2 and PAI-3 (plasminogen activator inhibitor-1, -2 and -3) are members of the serpin serine proteinase inhibitor family. PAI-1 and PAI-2 regulate uPA (urokinase-type plasminogen activator) and TPA (tissue plasminogen activator), resulting in the inhibition of proteolytic activity. Members of the serpin family generally complex with their target proteinases, then disassociate slowly into cleaved species that fold into stable inactive forms. PAI-1 can fold into the inactive state without cleavage resulting in the latent form of PAI-1. Activity can be restored to the latent form of PAI-1 through denaturation and renaturation. PAI-2 occurs in secreted and cytosolic forms through facultative polypeptide translocation. PAI-3 inhibits plasminogen activators as well as activated protein C. PAI-3 is secreted in plasma, but is also expressed in liver.

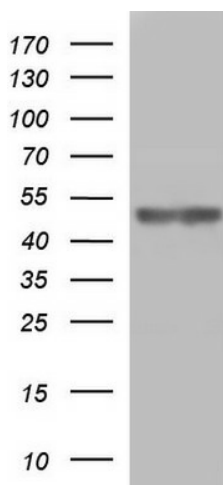
**Synonyms:** PAI-3; PAI3; PCI; PCI-B; PLANH3; PROC1

**Note:** This antibody was generated by SDIX's Genomic Antibody Technology® (GAT). [Learn about GAT](#)

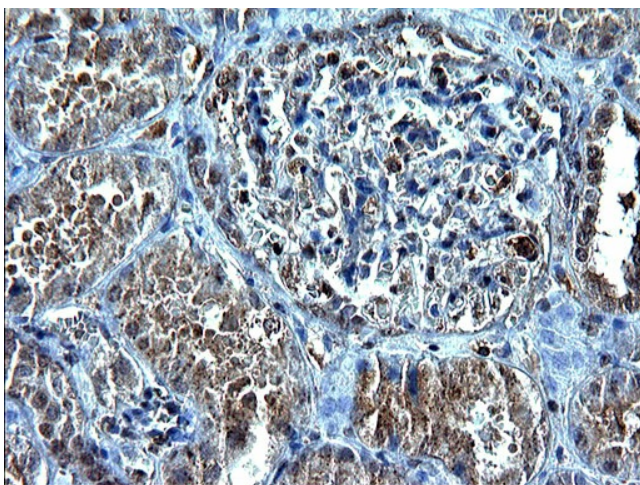
**Protein Families:** Druggable Genome, Secreted Protein

**Protein Pathways:** Complement and coagulation cascades

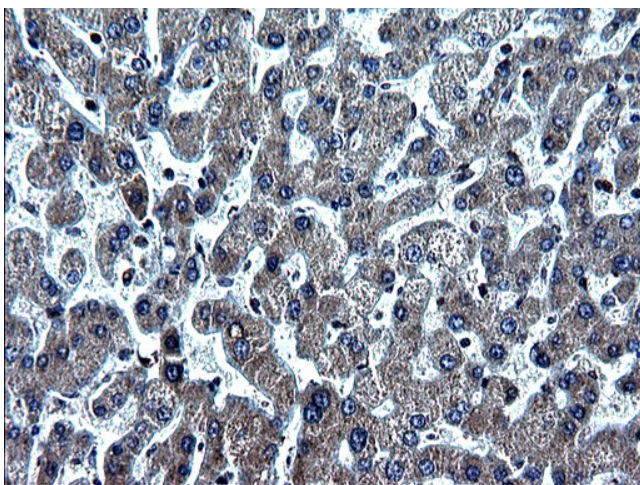
### Product images:



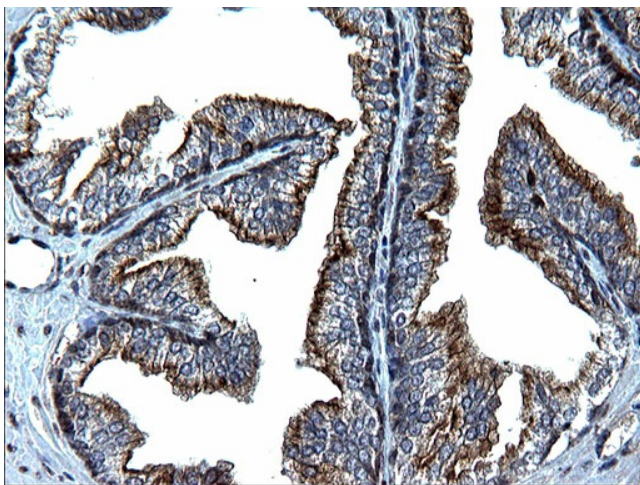
HEK293T cells were transfected with the pCMV6-ENTRY control (Left lane) or pCMV6-ENTRY SERPINA5 ([RC203599], Right lane) cDNA for 48 hrs and lysed. Equivalent amounts of cell lysates (5 ug per lane) were separated by SDS-PAGE and immunoblotted with anti-SER. Positive lysates [LY424603] (100ug) and [LC424603] (20ug) can be purchased separately from OriGene.



Immunohistochemical staining of paraffin-embedded Human Kidney tissue using anti-SERPINA5 rabbit polyclonal antibody. (TA590783)



Immunohistochemical staining of paraffin-embedded Human liver tissue using anti-SERPINA5 rabbit polyclonal antibody. (TA590783)



Immunohistochemical staining of paraffin-embedded Human prostate tissue using anti-SERPINA5 rabbit polyclonal antibody. (TA590783)