

Product datasheet for **TA590781**

BCL2 Rabbit Polyclonal Antibody

Product data:

| | |
|-----------------------|---|
| Product Type: | Primary Antibodies |
| Applications: | ELISA |
| Recommended Dilution: | WB 1:20000,ELISA 1:100-1:2000 |
| Reactivity: | Human |
| Host: | Rabbit |
| Isotype: | IgG |
| Clonality: | Polyclonal |
| Immunogen: | DNA immunization. This antibody is specific for the N Terminus Region of the target protein. |
| Formulation: | 20 mM Potassium Phosphate, 150 mM Sodium Chloride, pH 7.0 |
| Concentration: | 1.1mg/ml |
| Purification: | Purified from mouse ascites fluids or tissue culture supernatant by affinity chromatography (protein A/G) |
| Conjugation: | Unconjugated |
| Storage: | Store at -20°C as received. |
| Stability: | Stable for 12 months from date of receipt. |
| Gene Name: | BCL2 apoptosis regulator |
| Database Link: | NP_000648 Entrez Gene 596 Human P10415 |



[View online »](#)

Background:

BCL2 is an integral outer mitochondrial membrane protein that blocks the apoptotic death of some cells such as lymphocytes. Constitutive expression of BCL2, such as in the case of translocation of BCL2 to Ig heavy chain locus, is thought to be the cause of follicular lymphoma. Two transcript variants (alpha and beta) produced by alternate splicing, differ in their C-terminal ends. BCL2 suppresses apoptosis in a variety of cell systems including factor-dependent lymphohematopoietic and neural cells. It regulates cell death by controlling the mitochondrial membrane permeability. It appears to function in a feedback loop system with caspases. BCL2 inhibits caspase activity either by preventing the release of cytochrome c from the mitochondria and/or by binding to the apoptosis-activating factor (APAF1). It can form homodimers, and heterodimers with BAX, BAD, BAK and BclX(L). Heterodimerization with BAX requires intact BH1 and BH2 domains, and is necessary for anti-apoptotic activity. Also interacts with APAF1, RAF1, TP53BP2, BBC3, BCL2L1 and BNIP1.

Synonyms:

Bcl-2; PPP1R50

Note:

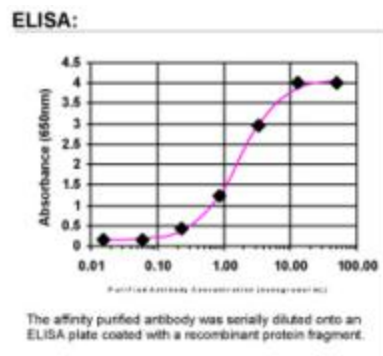
This antibody was generated by SDIX's Genomic Antibody Technology® (GAT). [Learn about GAT](#)

Protein Families:

Druggable Genome, ES Cell Differentiation/IPS, Stem cell - Pluripotency, Transmembrane

Protein Pathways:

Amyotrophic lateral sclerosis (ALS), Apoptosis, Colorectal cancer, Focal adhesion, Neurotrophin signaling pathway, Pathways in cancer, Prostate cancer, Small cell lung cancer

Product images:

ELISA: BCL2 Antibody