

Product datasheet for **TA590779**

12 Lipoxygenase (ALOX12) Rabbit Polyclonal Antibody

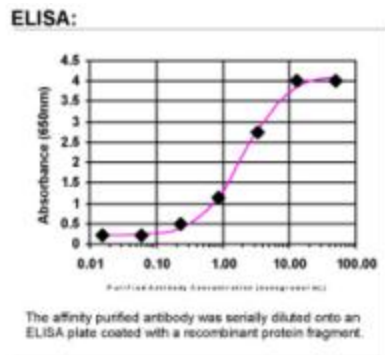
Product data:

Product Type:	Primary Antibodies
Applications:	ELISA, IF, IHC
Recommended Dilution:	ELISA: 1:100-1:2000; IHC: 1:225; IF: 1:56
Reactivity:	Human
Host:	Rabbit
Isotype:	IgG
Clonality:	Polyclonal
Immunogen:	DNA immunization. This antibody is specific for the C Terminus Region of the target protein.
Formulation:	20 mM Potassium Phosphate, 150 mM Sodium Chloride, pH 7.0
Concentration:	0.82mg/ml
Purification:	Purified from mouse ascites fluids or tissue culture supernatant by affinity chromatography (protein A/G)
Conjugation:	Unconjugated
Storage:	Store at -20°C as received.
Stability:	Stable for 12 months from date of receipt.
Gene Name:	arachidonate 12-lipoxygenase, 12S type
Database Link:	NP_000688 Entrez Gene 239 Human P18054
Background:	Oxygenase and 14,15-leukotriene A4 synthase activity
Synonyms:	12-LOX; 12S-LOX; LOG12
Note:	This antibody was generated by SDIX's Genomic Antibody Technology® (GAT). Learn about GAT
Protein Families:	Druggable Genome
Protein Pathways:	Arachidonic acid metabolism, Metabolic pathways

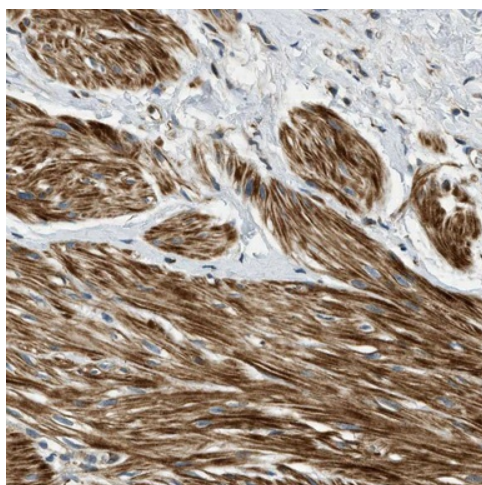


[View online »](#)

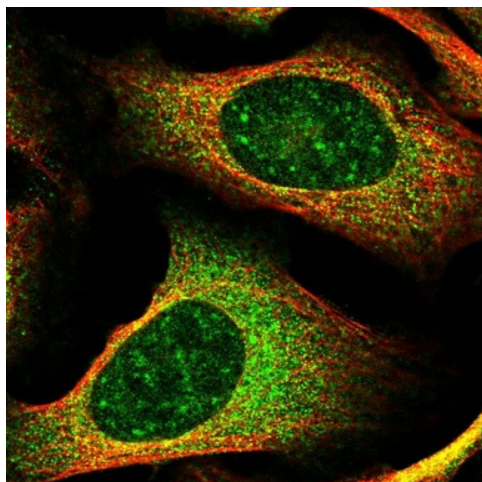
Product images:



ELISA: 12 Lipoxygenase Antibody



Immunohistochemical staining of human smooth muscle shows distinct positivity in smooth muscle cells. This validation was performed by Protein Atlas and the presentation of data is for informational purposes only.



Immunofluorescent staining of human cell line U-2 OS shows positivity in nucleus but not nucleoli & cytoplasm. This validation was performed by Protein Atlas and the presentation of data is for informational purposes only.