

Product datasheet for **TA590778**

Annexin A1 (ANXA1) Rabbit Polyclonal Antibody

Product data:

Product Type:	Primary Antibodies
Applications:	ELISA, IF, WB
Recommended Dilution:	WB 1:5000~20000, IF 1:500,ELISA 1:100-1:2000
Reactivity:	Human, Dog, Rat, Monkey, Mouse
Host:	Rabbit
Isotype:	IgG
Clonality:	Polyclonal
Immunogen:	DNA immunization. This antibody is specific for the Middle Region of the target protein.
Formulation:	20 mM Potassium Phosphate, 150 mM Sodium Chloride, pH 7.0
Concentration:	0.82mg/ml
Purification:	Purified from mouse ascites fluids or tissue culture supernatant by affinity chromatography (protein A/G)
Conjugation:	Unconjugated
Storage:	Store at -20°C as received.
Stability:	Stable for 12 months from date of receipt.
Gene Name:	annexin A1
Database Link:	NP_000691 Entrez Gene 16952 Mouse Entrez Gene 25380 Rat Entrez Gene 476322 Dog Entrez Gene 702946 Monkey Entrez Gene 301 Human P04083
Background:	Annexin I belongs to a family of Ca(2+)-dependent phospholipid binding proteins which have a molecular weight of approximately 35,000 to 40,000 and are preferentially located on the cytosolic face of the plasma membrane. Annexin I protein has an apparent relative molecular mass of 40 kDa, with phospholipase A2 inhibitory activity. Since phospholipase A2 is required for the biosynthesis of the potent mediators of inflammation, prostaglandins and leukotrienes, annexin I may have potential anti-inflammatory activity.
Synonyms:	ANX1; LPC1

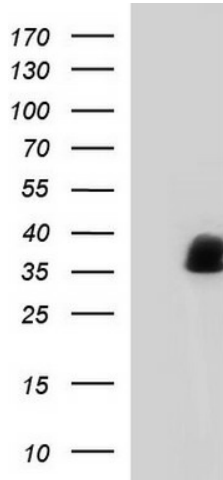


[View online »](#)

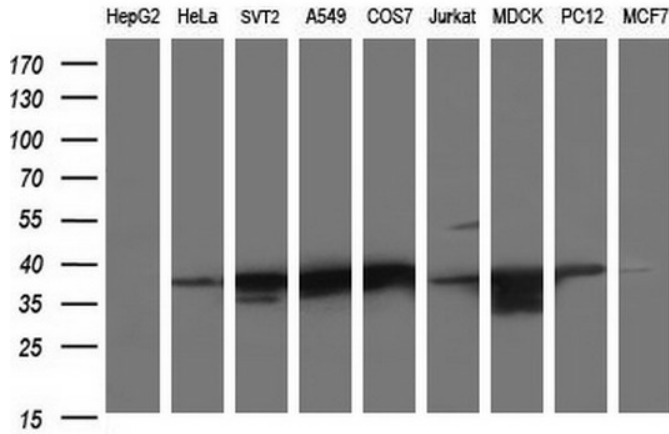
Note: This antibody was generated by SDIX's Genomic Antibody Technology® (GAT). [Learn about GAT](#)

Protein Families: Druggable Genome

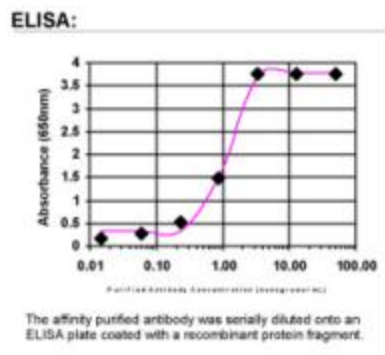
Product images:



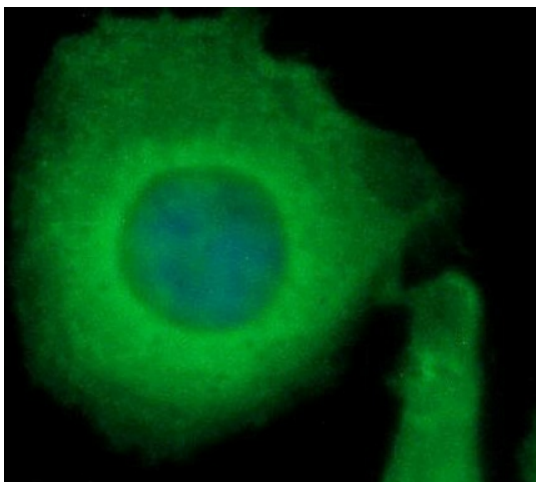
HEK293T cells were transfected with the pCMV6-ENTRY control (Left lane) or pCMV6-ENTRY ANXA1 ([RC201569], Right lane) cDNA for 48 hrs and lysed. Equivalent amounts of cell lysates (5 ug per lane) were separated by SDS-PAGE and immunoblotted with anti-ANXA1. Positive lysates [LY424560] (100ug) and [LC424560] (20ug) can be purchased separately from OriGene.



Western blot analysis of extracts (35ug) from 9 different cell lines by using anti-ANXA1 polyclonal antibody (HepG2: human; HeLa: human; SVT2: mouse; A549: human; COS7: monkey; Jurkat: human; MDCK: canine; PC12: rat; MCF7: human).



ELISA: Annexin A1 Antibody



Immunofluorescent staining of HeLa cells using anti-ANXA1 rabbit polyclonal antibody (TA590778).