

Product datasheet for **TA590766**

IL4R Rabbit Polyclonal Antibody

Product data:

Product Type:	Primary Antibodies
Applications:	ELISA, WB
Recommended Dilution:	WB 1:5000~20000,ELISA 1:100-1:2000
Reactivity:	Human
Host:	Rabbit
Isotype:	IgG
Clonality:	Polyclonal
Immunogen:	DNA immunization. This antibody is specific for the C Terminus Region of the target protein.
Formulation:	20 mM Potassium Phosphate, 150 mM Sodium Chloride, pH 7.0
Concentration:	1.3mg/ml
Purification:	Purified from mouse ascites fluids or tissue culture supernatant by affinity chromatography (protein A/G)
Conjugation:	Unconjugated
Storage:	Store at -20°C as received.
Stability:	Stable for 12 months from date of receipt.
Gene Name:	interleukin 4 receptor
Database Link:	NP_001008699 Entrez Gene 3566 Human P24394



[View online »](#)

Background:

IL4 is a pleiotropic cytokine produced by activated T cells, mast cells and basophils. It is a ligand for Interleukin 4 receptor. The Interleukin 4 receptor also binds to IL13, which may contribute to many overlapping functions of this cytokine and IL13. IL4 elicits many different biological responses, but has two dominant functions. The first is regulating differentiation of na[?]ve CD4⁺ T cell to the Th2 type. Th2 cells produce IL4, IL5, IL10 and IL13, which tend to favor a humoral immune response while suppressing a cell mediated immune response controlled by Th1 cells. STAT6, a signal transducer and activator of transcription, has been shown to play a central role in mediating the immune regulatory signal of this cytokine. The second is regulating IgE and IgG1 production by B cells. Two alternatively spliced transcript variants of this gene encoding distinct isoforms have been reported.

Synonyms:

CD124; IL4RA

Note:

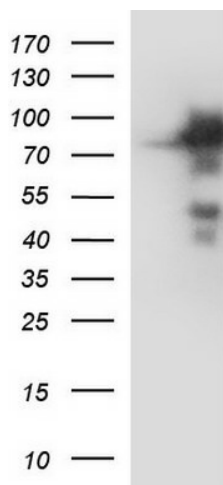
This antibody was generated by SDIX's Genomic Antibody Technology[®] (GAT). [Learn about GAT](#)

Protein Families:

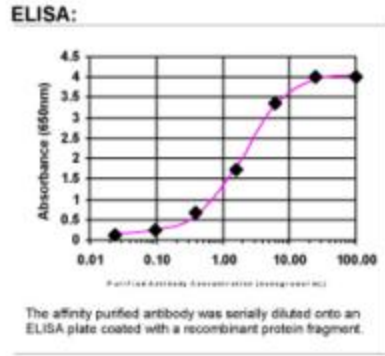
Druggable Genome, Secreted Protein

Protein Pathways:

Cytokine-cytokine receptor interaction, Hematopoietic cell lineage, Jak-STAT signaling pathway

Product images:

HEK293T cells were transfected with the pCMV6-ENTRY control (Left lane) or pCMV6-ENTRY IL4R ([RC212895], Right lane) cDNA for 48 hrs and lysed. Equivalent amounts of cell lysates (5 ug per lane) were separated by SDS-PAGE and immunoblotted with anti-IL4R.



ELISA: IL4 Receptor alpha Antibody