

## Product datasheet for **TA590763**

### LSP1 Rabbit Polyclonal Antibody

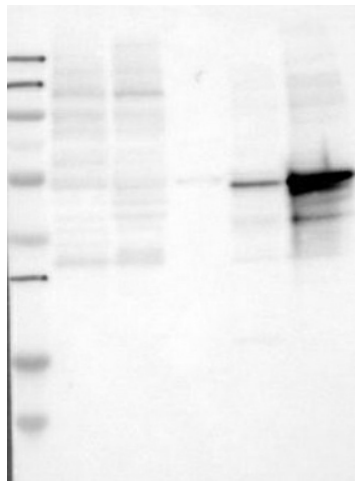
#### Product data:

Product Type:	Primary Antibodies
Applications:	ELISA, IF, IHC, WB
Recommended Dilution:	WB: 1:500; ELISA: 1:100-1:2000; IHC: 1:4000; IF: 1:2000
Reactivity:	Human
Host:	Rabbit
Isotype:	IgG
Clonality:	Polyclonal
Immunogen:	DNA immunization. This antibody is specific for the C Terminus Region of the target protein.
Formulation:	20 mM Potassium Phosphate, 150 mM Sodium Chloride, pH 7.0
Concentration:	0.84mg/ml
Purification:	Purified from mouse ascites fluids or tissue culture supernatant by affinity chromatography (protein A/G)
Conjugation:	Unconjugated
Storage:	Store at -20°C as received.
Stability:	Stable for 12 months from date of receipt.
Gene Name:	lymphocyte specific protein 1
Database Link:	<a href="#">NP_001013271</a> <a href="#">Entrez Gene 4046 Human P33241</a>
Background:	This gene encodes an intracellular F-actin binding protein. The protein is expressed in lymphocytes, neutrophils, macrophages, and endothelium and may regulate neutrophil motility, adhesion to fibrinogen matrix proteins, and transendothelial migration. Alternative splicing results in multiple transcript variants encoding different isoforms.
Synonyms:	pp52; WP34
Note:	This antibody was generated by SDIX's Genomic Antibody Technology® (GAT). <a href="#">Learn about GAT</a>

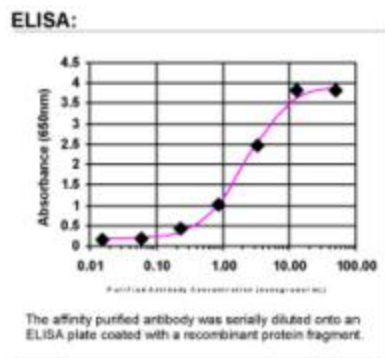


[View online »](#)

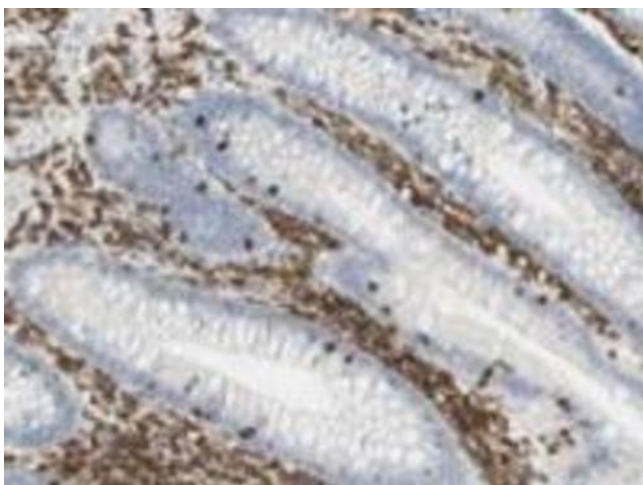
Product images:



Lane 1: Marker [kDa] 250, 130, 95, 72, 55, 36, 28, 17, 11; Lane 2: RT-4; Lane 3: U-251 MG; Lane 4: Human Plasma; Lane 5: Liver; Lane 6: Tonsil. This validation was performed by Protein Atlas and the presentation of data is for informational purposes only.



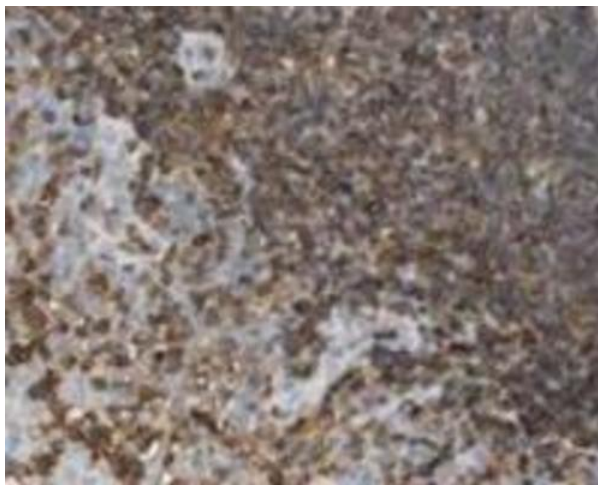
ELISA: LSP1 Antibody



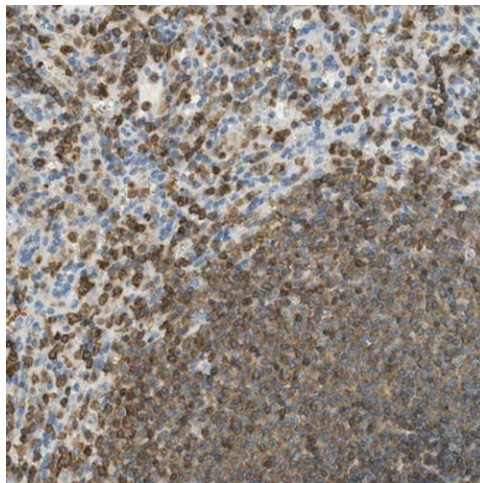
Immunohistochemistry: LSP1 Antibody - Immunohistochemical staining for lymphocyte-specific protein 1 (LSP1) in human lymphoid tissues. Lymphoid tissues of appendix displayed moderate to strong cytoplasmic positivity. Normal epithelial and stromal cells were negative. Most malignant lymphomas and a few cases of urothelial cancers expressed moderate cytoplasmic immunoreactivity (images not shown). These image are the courtesy of the Human Proteome Resource (HPR). Heat-induced epitope retrieval by EDTA solution buffer pH 8.0 at 120°C for 3 min.



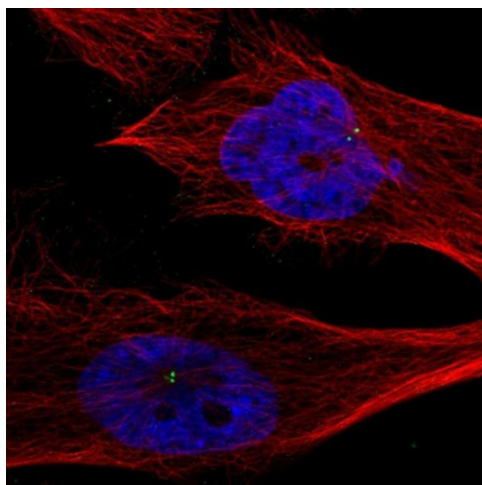
Immunohistochemistry: LSP1 Antibody - Immunohistochemical staining for lymphocyte-specific protein 1 (LSP1) in human lymphoid tissues. Lymphoid tissues of lymph nodes displayed moderate to strong cytoplasmic positivity. Normal epithelial and stromal cells were negative. Most malignant lymphomas and a few cases of urothelial cancers expressed moderate cytoplasmic immunoreactivity (images not shown). These image are the courtesy of the Human Proteome Resource (HPR). Heat-induced epitope retrieval by EDTA solution buffer pH 8.0 at 120°C for 3 min.



Immunohistochemistry: LSP1 Antibody - Immunohistochemical staining for lymphocyte-specific protein 1 (LSP1) in human lymphoid tissues. Lymphoid tissues of tonsil displayed moderate to strong cytoplasmic positivity. Normal epithelial and stromal cells were negative. Most malignant lymphomas and a few cases of urothelial cancers expressed moderate cytoplasmic immunoreactivity (images not shown). These image are the courtesy of the Human Proteome Resource (HPR). Heat-induced epitope retrieval by EDTA solution buffer pH 8.0 at 120°C for 3 min.



Immunohistochemical staining of human spleen shows strong cytoplasmic positivity in lymphocytes. This validation was performed by Protein Atlas and the presentation of data is for informational purposes only. Heat-induced epitope retrieval by EDTA solution buffer pH 8.0 at 120°C for 3 min.



Immunofluorescent staining of human cell line U-251 MG shows positivity in centrosome. This validation was performed by Protein Atlas and the presentation of data is for informational purposes only.