

Product datasheet for TA590752

Cullin 4B (CUL4B) Rabbit Polyclonal Antibody

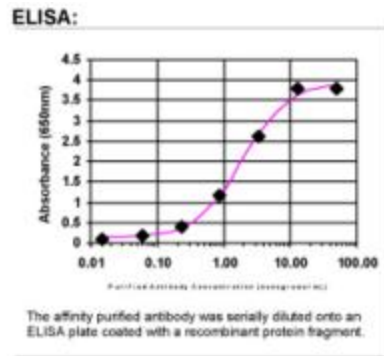
Product data:

Product Type:	Primary Antibodies
Applications:	ELISA, IF, IHC, WB
Recommended Dilution:	WB 1:20000, IHC 1:150, ELISA 1:100-1:2000
Reactivity:	Human
Host:	Rabbit
Isotype:	IgG
Clonality:	Polyclonal
Immunogen:	DNA immunization. This antibody is specific for the C Terminus Region of the target protein.
Formulation:	20 mM Potassium Phosphate, 150 mM Sodium Chloride, pH 7.0
Concentration:	1.2mg/ml
Purification:	Purified from mouse ascites fluids or tissue culture supernatant by affinity chromatography (protein A/G)
Conjugation:	Unconjugated
Storage:	Store at -20°C as received.
Stability:	Stable for 12 months from date of receipt.
Gene Name:	cullin 4B
Database Link:	NP_001073341 Entrez Gene 8450 Human Q13620
Background:	This gene is a member of the cullin family. The encoded protein forms a complex that functions as an E3 ubiquitin ligase and catalyzes the polyubiquitination of specific protein substrates in the cell. The protein interacts with a ring finger protein, and is required for the proteolysis of several regulators of DNA replication including chromatin licensing and DNA replication factor 1 and cyclin E. Multiple transcript variants encoding different isoforms have been found for this gene. [provided by RefSeq]
Synonyms:	CUL-4B; MRXHF2; MRXS15; MRXSC; SFM2
Note:	This antibody was generated by SDIX's Genomic Antibody Technology® (GAT). Learn about GAT

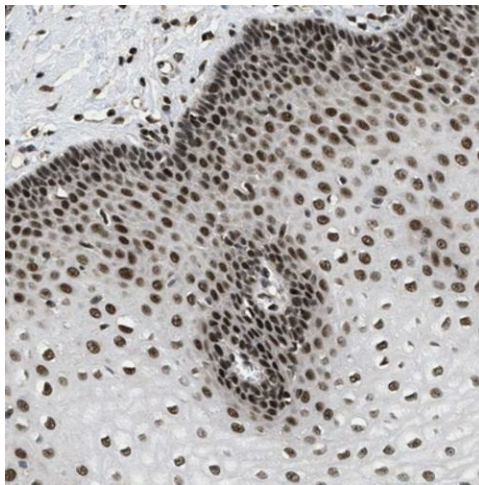

[View online »](#)

Protein Pathways: Nucleotide excision repair, Ubiquitin mediated proteolysis

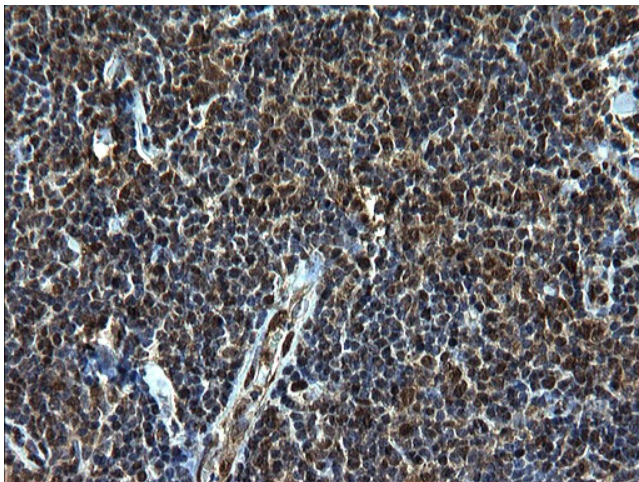
Product images:



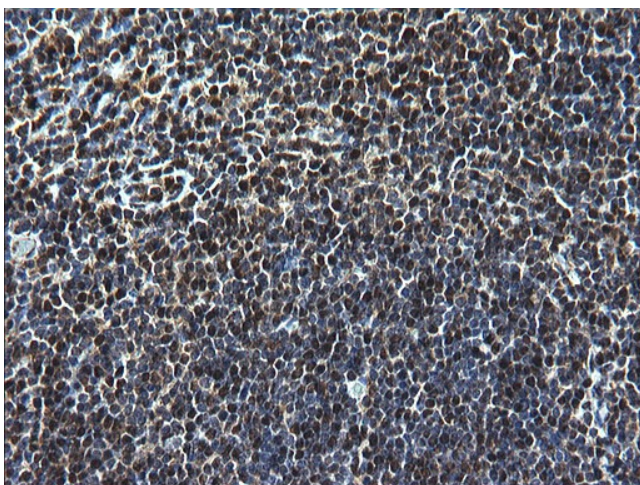
ELISA: CUL4B Antibody



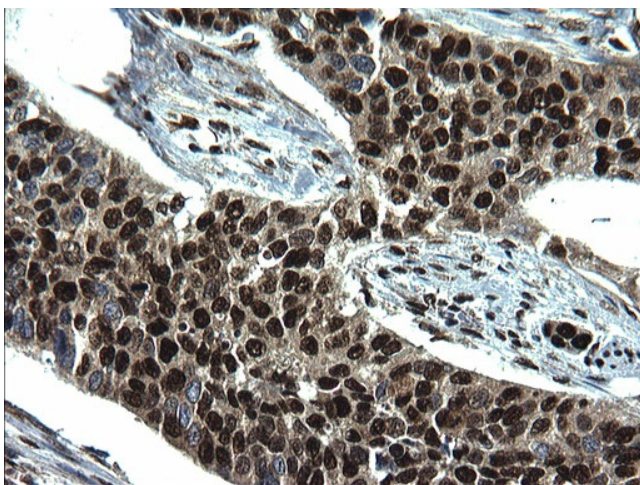
Immunohistochemical staining of human esophagus shows nuclear positivity in squamous epithelial cells. This validation was performed by Protein Atlas and the presentation of data is for informational purposes only. Heat-induced epitope retrieval by EDTA solution buffer pH 8.0 at 120°C for 3 min.



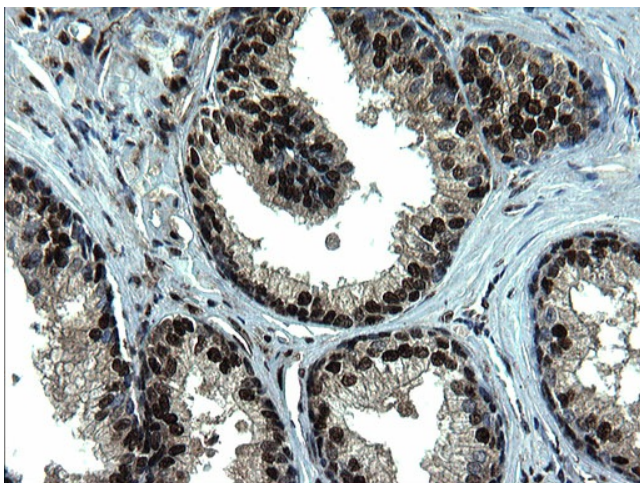
Immunohistochemical staining of paraffin-embedded Human lymphoma tissue using anti-CUL4B Rabbit Polyclonal antibody. (TA590752). Heat-induced epitope retrieval by EDTA solution buffer pH 8.0 at 120°C for 3 min.



Immunohistochemical staining of paraffin-embedded Human lymph node tissue using anti-CUL4B Rabbit Polyclonal antibody. (TA590752). Heat-induced epitope retrieval by EDTA solution buffer pH 8.0 at 120°C for 3 min.



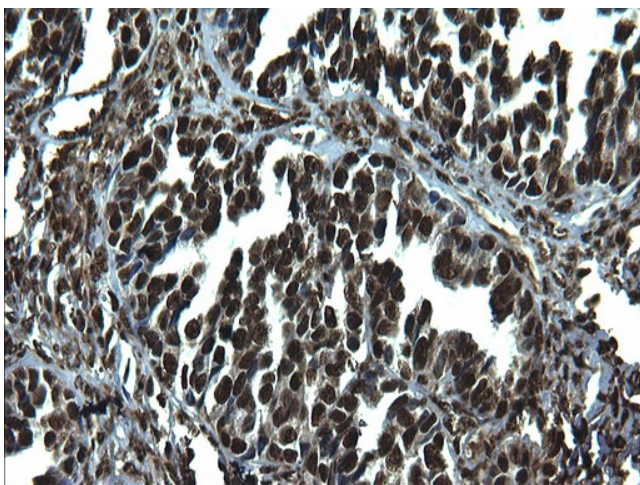
Immunohistochemical staining of paraffin-embedded Carcinoma of Human bladder tissue using anti-CUL4B Rabbit Polyclonal antibody. (TA590752). Heat-induced epitope retrieval by EDTA solution buffer pH 8.0 at 120°C for 3 min.



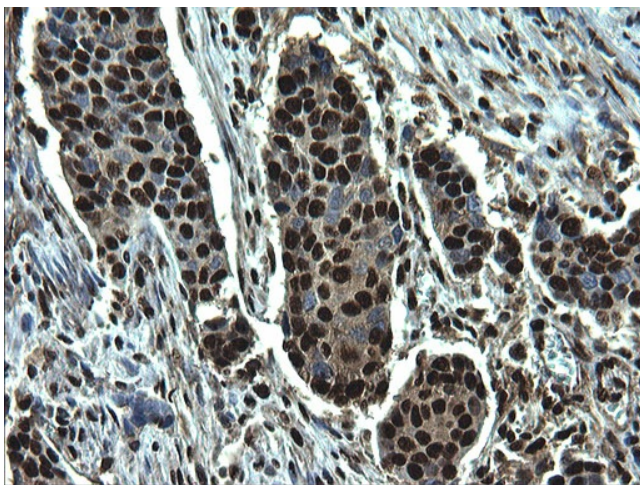
Immunohistochemical staining of paraffin-embedded Human prostate tissue using anti-CUL4B Rabbit Polyclonal antibody. (TA590752). Heat-induced epitope retrieval by EDTA solution buffer pH 8.0 at 120°C for 3 min.



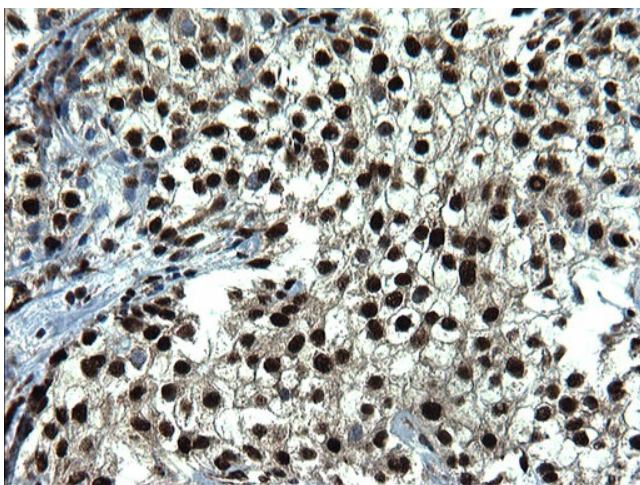
Immunohistochemical staining of paraffin-embedded Human thyroid tissue using anti-CUL4B Rabbit Polyclonal antibody. (TA590752). Heat-induced epitope retrieval by EDTA solution buffer pH 8.0 at 120°C for 3 min.



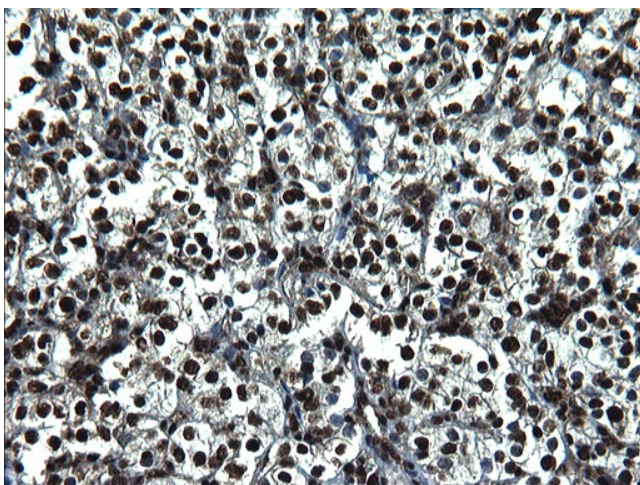
Immunohistochemical staining of paraffin-embedded Adenocarcinoma of Human ovary tissue using anti-CUL4B Rabbit Polyclonal antibody. (TA590752). Heat-induced epitope retrieval by EDTA solution buffer pH 8.0 at 120°C for 3 min.



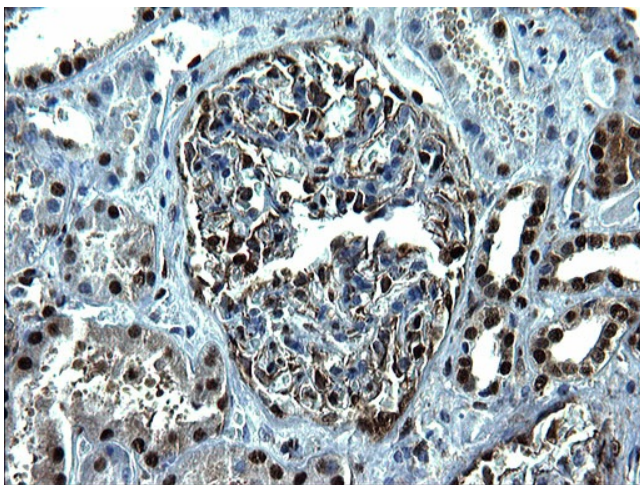
Immunohistochemical staining of paraffin-embedded Carcinoma of Human lung tissue using anti-CUL4B Rabbit Polyclonal antibody. (TA590752). Heat-induced epitope retrieval by EDTA solution buffer pH 8.0 at 120°C for 3 min.



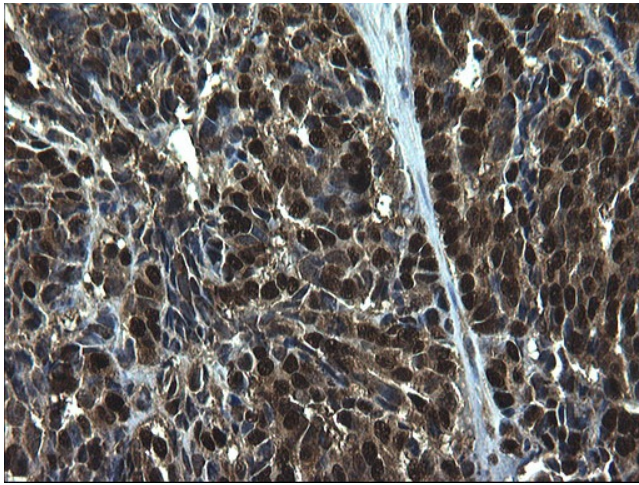
Immunohistochemical staining of paraffin-embedded Carcinoma of Human liver tissue using anti-CUL4B Rabbit Polyclonal antibody. (TA590752). Heat-induced epitope retrieval by EDTA solution buffer pH 8.0 at 120°C for 3 min.



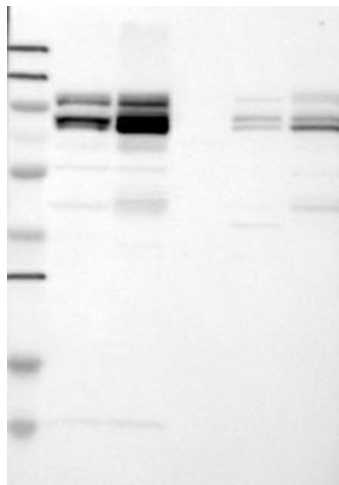
Immunohistochemical staining of paraffin-embedded Carcinoma of Human kidney tissue using anti-CUL4B Rabbit Polyclonal antibody. (TA590752). Heat-induced epitope retrieval by EDTA solution buffer pH 8.0 at 120°C for 3 min.



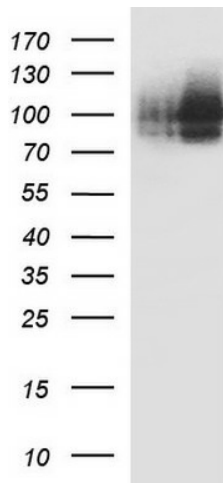
Immunohistochemical staining of paraffin-embedded Human Kidney tissue using anti-CUL4B Rabbit Polyclonal antibody. (TA590752). Heat-induced epitope retrieval by EDTA solution buffer pH 8.0 at 120°C for 3 min.



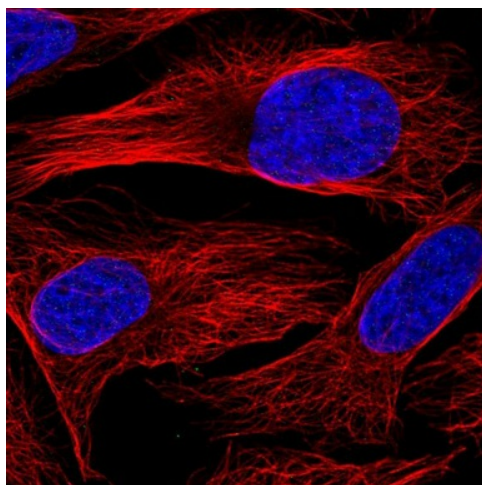
Immunohistochemical staining of paraffin-embedded Adenocarcinoma of Human colon tissue using anti-CUL4B Rabbit Polyclonal antibody. (TA590752). Heat-induced epitope retrieval by EDTA solution buffer pH 8.0 at 120°C for 3 min.



Lane 1: Marker [kDa] 250, 130, 95, 72, 55, 36, 28, 17, 11; Lane 2: RT-4; Lane 3: U-251 MG; Lane 4: Human Plasma; Lane 5: Liver; Lane 6: Tonsil. This validation was performed by Protein Atlas and the presentation of data is for informational purposes only.



HEK293T cells were transfected with the pCMV6-ENTRY control (Cat# [PS100001], Left lane) or pCMV6-ENTRY CUL4B (Cat# [RC220405], Right lane) cDNA for 48 hrs and lysed. Equivalent amounts of cell lysates (5 ug per lane) were separated by SDS-PAGE and immunoblotted with anti-CUL4B (Cat# TA590752).



Immunofluorescent staining of human cell line U-2 OS shows no positivity. This validation was performed by Protein Atlas and the presentation of data is for informational purposes only.