

Product datasheet for **TA590749**

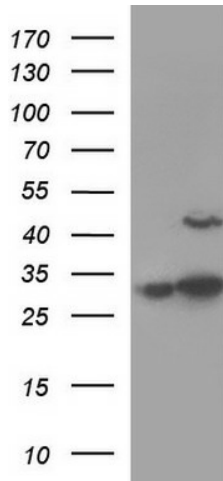
AAMP Rabbit Polyclonal Antibody

Product data:

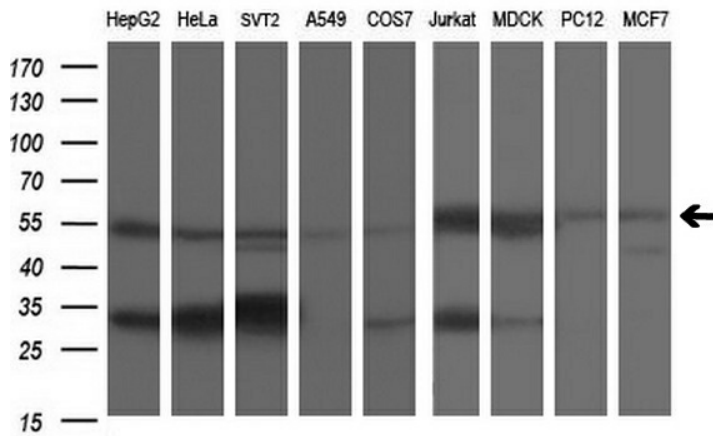
Product Type:	Primary Antibodies
Applications:	ELISA, IF, IHC, WB
Recommended Dilution:	WB 1:5000~20000, ELISA 1:100-1:2000
Reactivity:	Human, Dog, Rat, Monkey, Mouse
Host:	Rabbit
Isotype:	IgG
Clonality:	Polyclonal
Immunogen:	DNA immunization. This antibody is specific for the C Terminus Region of the target protein.
Formulation:	20 mM Potassium Phosphate, 150 mM Sodium Chloride, pH 7.0
Concentration:	1 mg/ml
Purification:	Purified from mouse ascites fluids or tissue culture supernatant by affinity chromatography (protein A/G)
Conjugation:	Unconjugated
Storage:	Store at -20°C as received.
Stability:	Stable for 12 months from date of receipt.
Gene Name:	angio associated migratory cell protein
Database Link:	NP_001078 Entrez Gene 227290 Mouse Entrez Gene 301512 Rat Entrez Gene 478908 Dog Entrez Gene 700763 Monkey Entrez Gene 14 Human Q13685
Background:	The gene product is an immunoglobulin-type protein. It is found to be expressed strongly in endothelial cells, cytotrophoblasts, and poorly differentiated colon adenocarcinoma cells found in lymphatics. The protein contains a heparin-binding domain and mediates heparin-sensitive cell adhesion. [provided by RefSeq]
Synonyms:	angio-associated; migratory cell protein
Note:	This antibody was generated by SDIX's Genomic Antibody Technology® (GAT). Learn about GAT



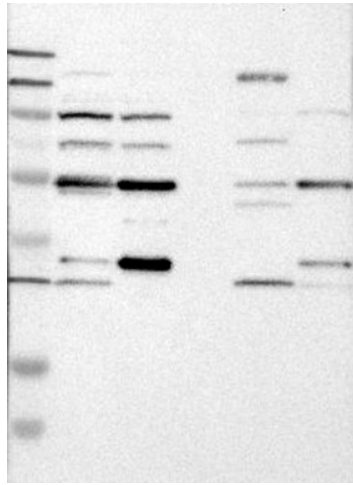
[View online »](#)

Product images:


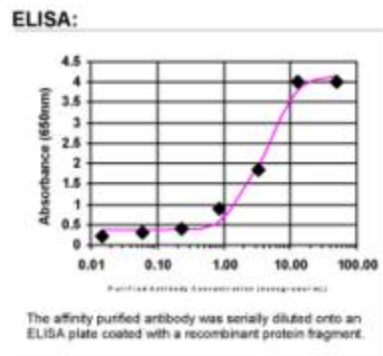
HEK293T cells were transfected with the pCMV6-ENTRY control (Cat# [PS100001], Left lane) or pCMV6-ENTRY AAMP (Cat# [RC218474], Right lane) cDNA for 48 hrs and lysed. Equivalent amounts of cell lysates (5 ug per lane) were separated by SDS-PAGE and immunoblotted with anti-AAMP(Cat# TA590749). Positive lysates [LY421332] (100ug) and [LC421332] (20ug) can be purchased separately from OriGene.



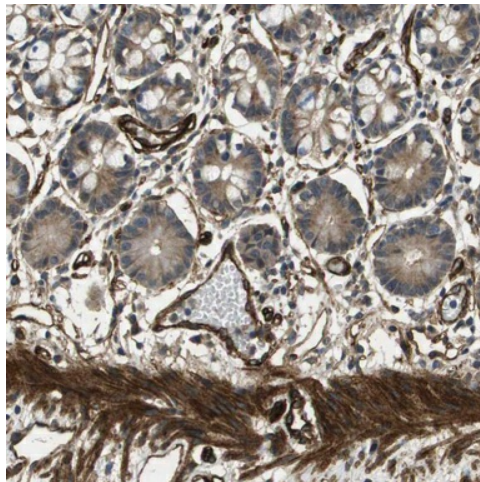
Western blot analysis of extracts (35ug) from 9 different cell lines by using anti-AAMP polyclonal antibody (HepG2: human; HeLa: human; SVT2: mouse; A549: human; COS7: monkey; Jurkat: human; MDCK: canine; PC12: rat; MCF7: human).



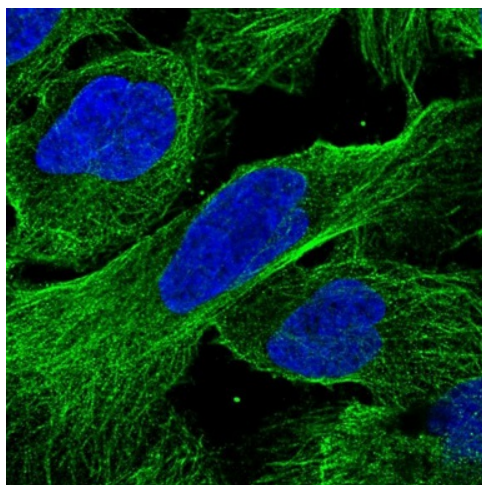
Lane 1: Marker [kDa] 250, 130, 95, 72, 55, 36, 28, 17, 11; Lane 2: RT-4; Lane 3: U-251 MG; Lane 4: Human Plasma; Lane 5: Liver; Lane 6: Tonsil
This validation was performed by Protein Atlas and the presentation of data is for informational purposes only.



ELISA: AAMP Antibody



Immunohistochemical staining of human small intestine shows moderate cytoplasmic positivity in glandular cells and distinct staining of blood vessels and smooth muscle cells. This validation was performed by Protein Atlas and the presentation of data is for informational purposes only.



Immunofluorescent staining of human cell line U-2 OS shows positivity in cytoskeleton (microtubules). This validation was performed by Protein Atlas and the presentation of data is for informational purposes only.