

Product datasheet for **TA590741**

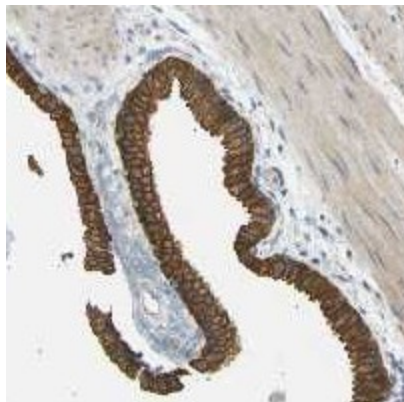
TBC1D8 Rabbit Polyclonal Antibody

Product data:

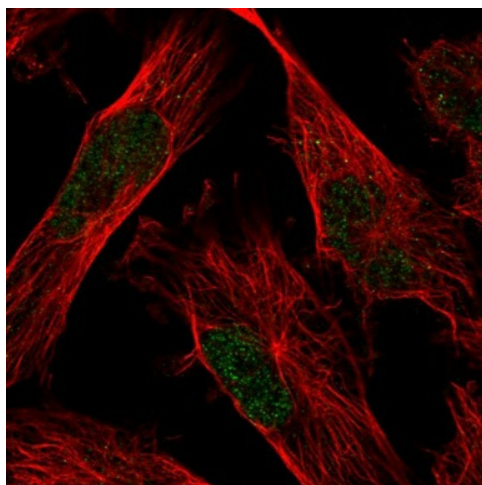
Product Type:	Primary Antibodies
Applications:	IF, IHC
Recommended Dilution:	ELISA: 1:100-1:2000; IHC: 1:10-1:2000; IHC-P 1:10-1:2000
Reactivity:	Human
Host:	Rabbit
Isotype:	IgG
Clonality:	Polyclonal
Immunogen:	DNA immunization. This antibody is specific for the N Terminus Region of the target protein.
Formulation:	20 mM Potassium Phosphate, 150 mM Sodium Chloride, pH 7.0
Concentration:	0.94mg/ml
Purification:	Purified from mouse ascites fluids or tissue culture supernatant by affinity chromatography (protein A/G)
Conjugation:	Unconjugated
Storage:	Store at -20°C as received.
Stability:	Stable for 12 months from date of receipt.
Gene Name:	TBC1 domain family member 8
Database Link:	NP_001095896 Entrez Gene 11138 Human O95759
Background:	TBC1D8 may act as a GTPase-activating protein for Rab family protein(s).
Synonyms:	AD3; GRAMD8; HBLP1; TBC1D8A; VRP
Note:	This antibody was generated by SDIX's Genomic Antibody Technology® (GAT). Learn about GAT



[View online »](#)

Product images:

Immunohistochemical staining of human gall bladder shows cytoplasmic and membranous positivity in glandular cells. Antibody dilution: 1:400. Image and statement courtesy of the Human Protein Atlas (HPA).



Immunofluorescent staining of human cell line U-251 MG shows positivity in nucleus but excluded from the nucleoli. Antibody dilution: 1:100. Image and statement courtesy of the Human Protein Atlas (HPA).