

Product datasheet for **TA590739**

BubR1 (BUB1B) Rabbit Polyclonal Antibody

Product data:

| | |
|------------------------------|---|
| Product Type: | Primary Antibodies |
| Applications: | ELISA, IHC, WB |
| Recommended Dilution: | WB 1:20000, IHC 1:150, ELISA 1:100-1:2000 |
| Reactivity: | Human |
| Host: | Rabbit |
| Isotype: | IgG |
| Clonality: | Polyclonal |
| Immunogen: | DNA immunization. This antibody is specific for the N Terminus Region of the target protein. |
| Formulation: | 20 mM Potassium Phosphate, 150 mM Sodium Chloride, pH 7.0 |
| Concentration: | 1.21mg/ml |
| Purification: | Purified from mouse ascites fluids or tissue culture supernatant by affinity chromatography (protein A/G) |
| Conjugation: | Unconjugated |
| Storage: | Store at -20°C as received. |
| Stability: | Stable for 12 months from date of receipt. |
| Gene Name: | BUB1 mitotic checkpoint serine/threonine kinase B |
| Database Link: | NP_001202 Entrez Gene 701 Human O60566 |

Background: Compromised spindle checkpoints are thought to play an important role in genetic instability that predisposes cells to malignant transformations. Human cells contain two related checkpoint protein kinases, evolved from the BUB1 gene; hBUBR1 and hBUB1. They are important components of the spindle checkpoint. Both kinases monitor mitotic kinetochore-microtubule interactions. hBUBR1 is essential for normal mitotic progression as it prevents cells from entering into anaphase too early. BUBR1 has been detected in human cancers. It has been identified as a novel binding partner of BCSG1 (Breast Cancer-Specific Gene 1), which has been suggested to accelerate the progression of breast cancer by compromising the mitotic checkpoint control through inactivation of BUBR1.



[View online »](#)

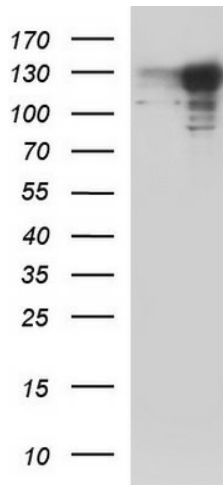
Synonyms: Bub1A; BUB1beta; BUBR1; hBUBR1; MAD3L; MVA1; SSK1

Note: This antibody was generated by SDIX's Genomic Antibody Technology® (GAT). [Learn about GAT](#)

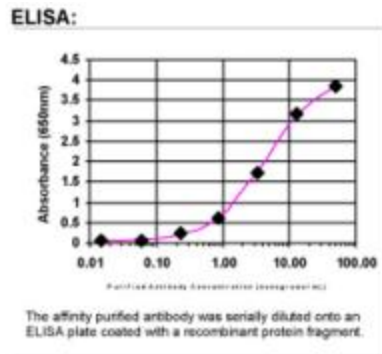
Protein Families: Druggable Genome, Protein Kinase, Stem cell - Pluripotency

Protein Pathways: Cell cycle

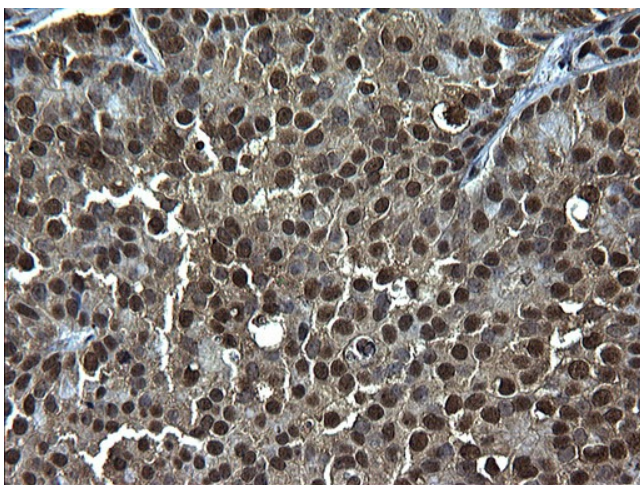
Product images:



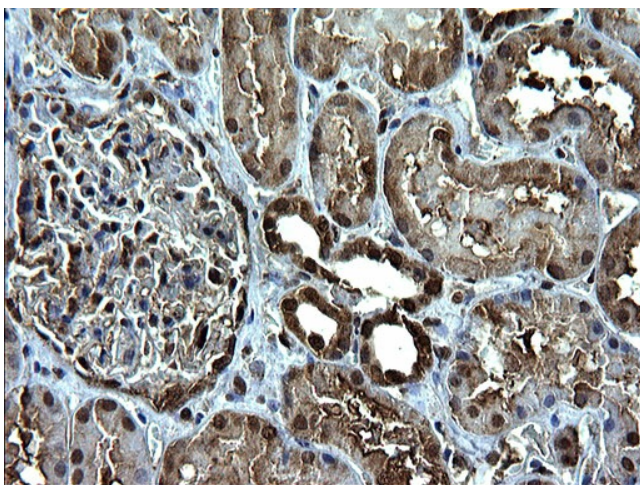
HEK293T cells were transfected with the pCMV6-ENTRY control (Left lane) or pCMV6-ENTRY BUB1B ([RC205844], Right lane) cDNA for 48 hrs and lysed. Equivalent amounts of cell lysates (5 ug per lane) were separated by SDS-PAGE and immunoblotted with anti-BUB1B. Positive lysates [LY420068] (100ug) and [LC420068] (20ug) can be purchased separately from OriGene.



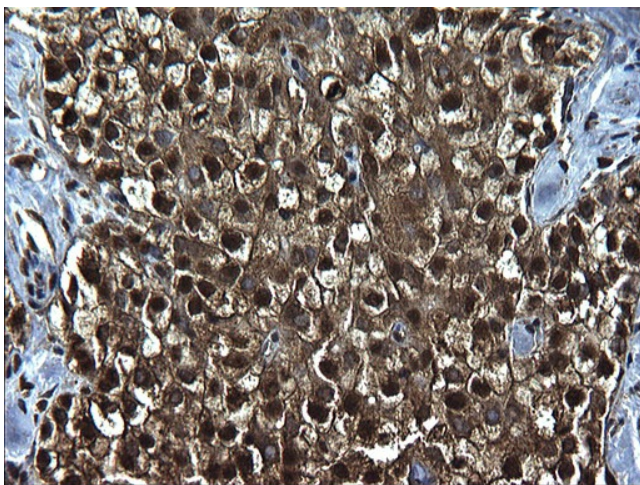
ELISA: BubR1 Antibody



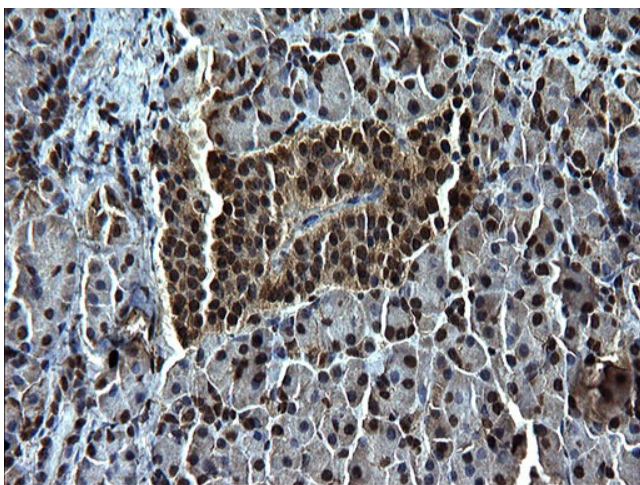
Immunohistochemical staining of paraffin-embedded Adenocarcinoma of Human breast tissue using anti-BUB1B Rabbit Polyclonal antibody. (TA590739)



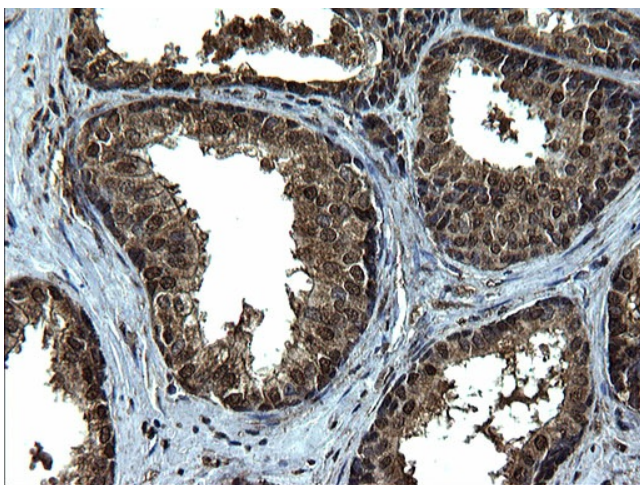
Immunohistochemical staining of paraffin-embedded Adenocarcinoma of Human colon tissue using anti-BUB1B Rabbit Polyclonal antibody. (TA590739)



Immunohistochemical staining of paraffin-embedded Carcinoma of Human liver tissue using anti-BUB1B Rabbit Polyclonal antibody. (TA590739)



Immunohistochemical staining of paraffin-embedded Human pancreas tissue using anti-BUB1B Rabbit Polyclonal antibody. (TA590739)



Immunohistochemical staining of paraffin-embedded Human prostate tissue using anti-BUB1B Rabbit Polyclonal antibody. (TA590739)