

Product datasheet for **TA590738**

Cathepsin V (CTSV) Rabbit Polyclonal Antibody

Product data:

Product Type:	Primary Antibodies
Applications:	ELISA, IF, IHC, WB
Recommended Dilution:	WB 1:20000, IHC 1:150,ELISA 1:100-1:2000
Reactivity:	Human
Host:	Rabbit
Isotype:	IgG
Clonality:	Polyclonal
Immunogen:	DNA immunization. This antibody is specific for the Middle Region of the target protein.
Formulation:	20 mM Potassium Phosphate, 150 mM Sodium Chloride, pH 7.0
Concentration:	1.22mg/ml
Purification:	Purified from mouse ascites fluids or tissue culture supernatant by affinity chromatography (protein A/G)
Conjugation:	Unconjugated
Storage:	Store at -20°C as received.
Stability:	Stable for 12 months from date of receipt.
Gene Name:	cathepsin V
Database Link:	NP_001324 Entrez Gene 1515 Human O60911
Background:	The protein encoded by this gene, a member of the peptidase C1 family, is a lysosomal cysteine proteinase that may play an important role in corneal physiology. This gene is expressed in colorectal and breast carcinomas but not in normal colon, mammary gland, or peritumoral tissues, suggesting a possible role for this gene in tumor processes. [provided by RefSeq]
Synonyms:	CATL2; CTSL2; CTSU
Note:	This antibody was generated by SDIX's Genomic Antibody Technology® (GAT). Learn about GAT

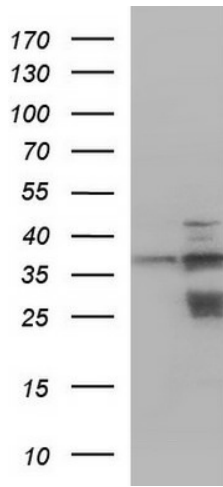


[View online »](#)

Protein Families: Druggable Genome, Protease

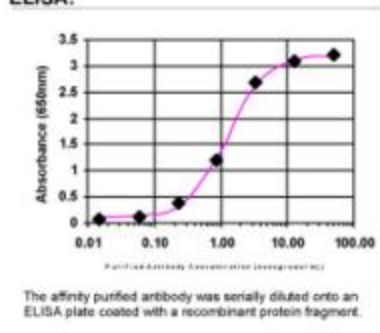
Protein Pathways: Lysosome

Product images:

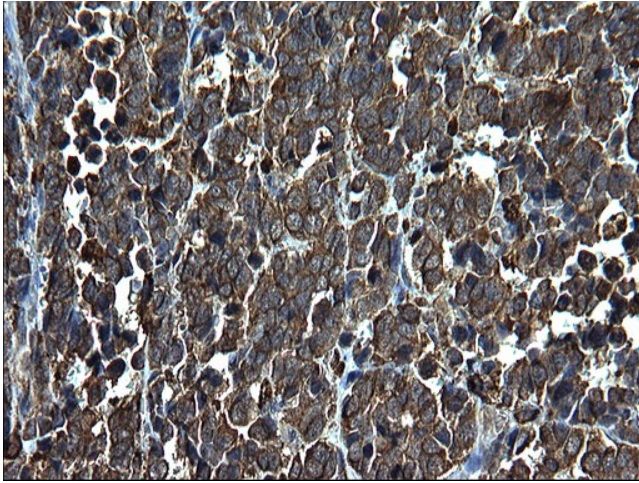


HEK293T cells were transfected with the pCMV6-ENTRY control (Cat# [PS100001], Left lane) or pCMV6-ENTRY CTSV (Cat# [RC219396], Right lane) cDNA for 48 hrs and lysed. Equivalent amounts of cell lysates (5 ug per lane) were separated by SDS-PAGE and immunoblotted with anti-CTSV(Cat# TA590738). Positive lysates [LY420007] (100ug) and [LC420007] (20ug) can be purchased separately from OriGene.

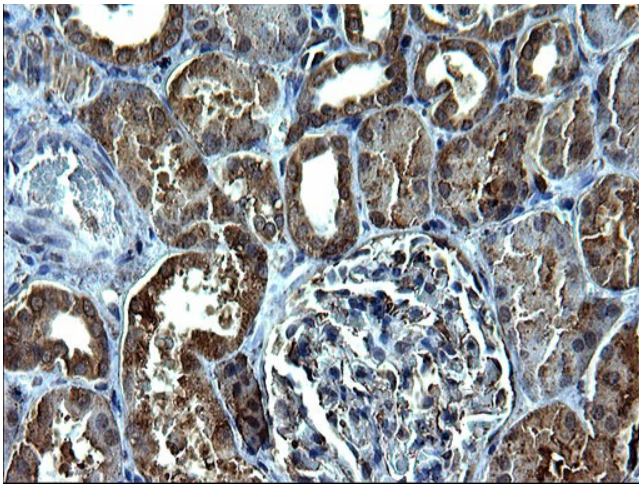
ELISA:



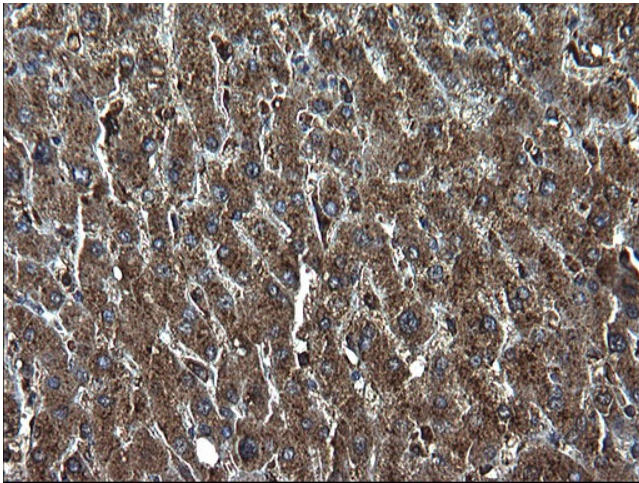
ELISA: Cathepsin V Antibody



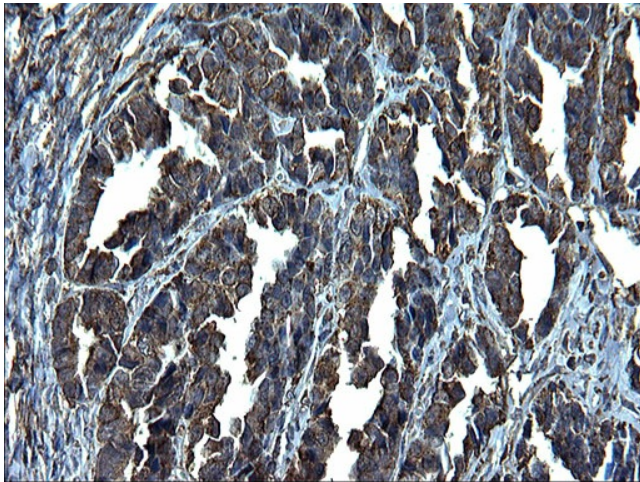
Immunohistochemical staining of paraffin-embedded Adenocarcinoma of Human colon tissue using anti-CTSV Rabbit Polyclonal antibody. (TA590738)



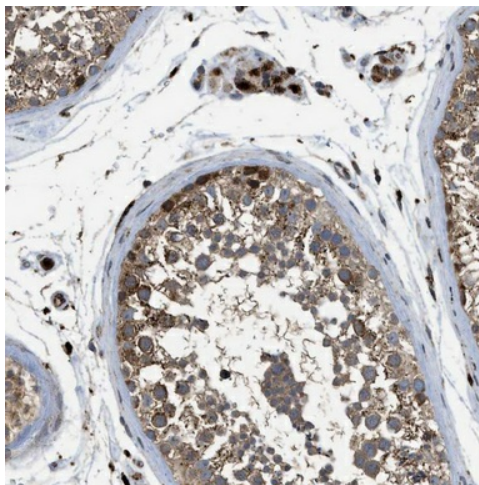
Immunohistochemical staining of paraffin-embedded Human Kidney tissue using anti-CTSV Rabbit Polyclonal antibody. (TA590738)



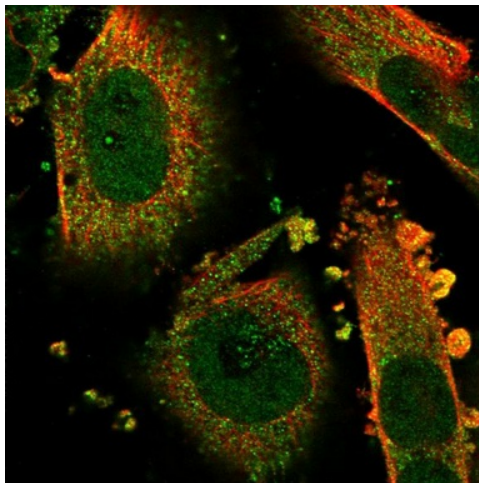
Immunohistochemical staining of paraffin-embedded Human liver tissue using anti-CTSV Rabbit Polyclonal antibody. (TA590738)



Immunohistochemical staining of paraffin-embedded Adenocarcinoma of Human ovary tissue using anti-CTSV Rabbit Polyclonal antibody. (TA590738)



Immunohistochemical staining of human testis shows strong cytoplasmic positivity in Leydig cells. Antibody dilution: 1:125. Image and statement courtesy of the Human Protein Atlas (HPA).



Immunofluorescent staining of human cell line U-251 MG shows positivity in nucleus, nucleoli & cytoplasm. Antibody dilution: 1:31. Image and statement courtesy of the Human Protein Atlas (HPA).