

Product datasheet for **TA590737**

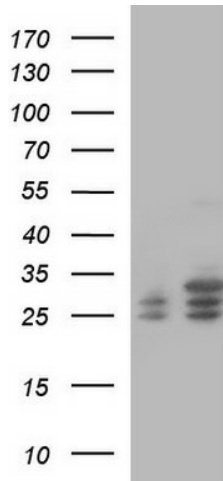
CLNS1A Rabbit Polyclonal Antibody

Product data:

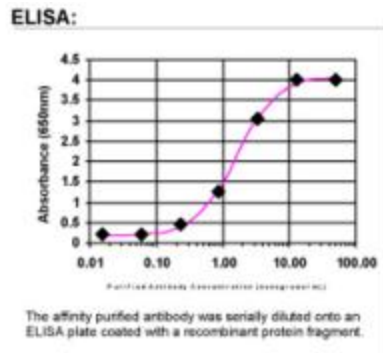
Product Type:	Primary Antibodies
Applications:	ELISA, IF, IHC, WB
Recommended Dilution:	WB 1:5000~20000,ELISA 1:100-1:2000
Reactivity:	Human
Host:	Rabbit
Isotype:	IgG
Clonality:	Polyclonal
Immunogen:	DNA immunization. This antibody is specific for the N Terminus Region of the target protein.
Formulation:	20 mM Potassium Phosphate, 150 mM Sodium Chloride, pH 7.0
Concentration:	1.01mg/ml
Purification:	Purified from mouse ascites fluids or tissue culture supernatant by affinity chromatography (protein A/G)
Conjugation:	Unconjugated
Storage:	Store at -20°C as received.
Stability:	Stable for 12 months from date of receipt.
Gene Name:	chloride nucleotide-sensitive channel 1A
Database Link:	NP_001284 Entrez Gene 1207 Human P54105
Background:	The interaction with Sm proteins inhibits CLNS1A assembly on U RNA and interferes with snRNP biogenesis. CLNS1A inhibits the binding of survival motor neuron protein (SMN) to Sm proteins. May participate in cellular volume control by activation of a swelling-induced chloride conductance pathway.
Synonyms:	CLCI; CLNS1B; IClh
Note:	This antibody was generated by SDIX's Genomic Antibody Technology® (GAT). Learn about GAT
Protein Families:	Ion Channels: Other



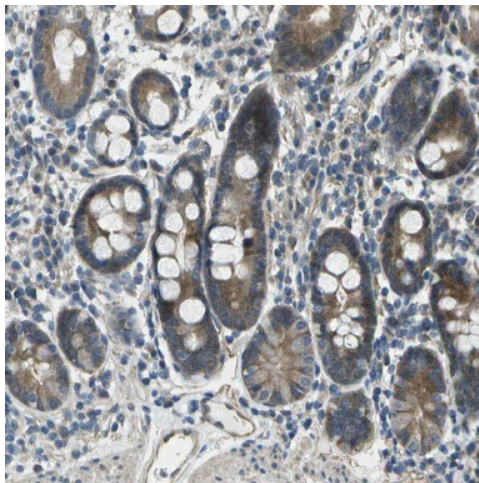
[View online »](#)

Product images:


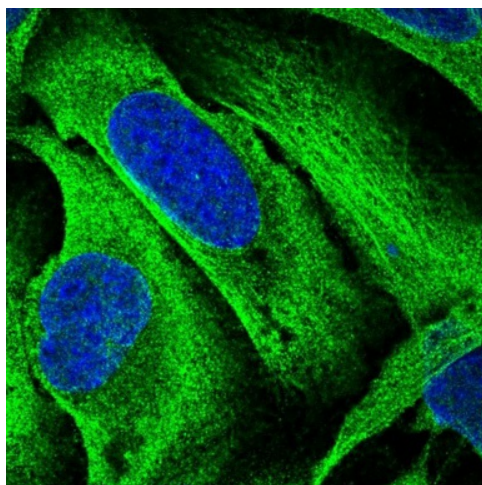
HEK293T cells were transfected with the pCMV6-ENTRY control (Cat# [PS100001], Left lane) or pCMV6-ENTRY CLNS1A (Cat# [RC213169], Right lane) cDNA for 48 hrs and lysed. Equivalent amounts of cell lysates (5 ug per lane) were separated by SDS-PAGE and immunoblotted with anti-CLNS1(Cat# TA590737). Positive lysates [LY420002] (100ug) and [LC420002] (20ug) can be purchased separately from OriGene.



ELISA: CLNS1A Antibody



Immunohistochemical staining of human duodenum shows moderate cytoplasmic positivity in glandular cells. Antibody dilution: 1:800. Image and statement courtesy of the Human Protein Atlas (HPA).



Immunofluorescent staining of human cell line U-2 OS shows positivity in cytoplasm & cytoskeleton (microtubules). This validation was performed by Protein Atlas and the presentation of data is for informational purposes only.