

Product datasheet for **TA590736**

CXADR Rabbit Polyclonal Antibody

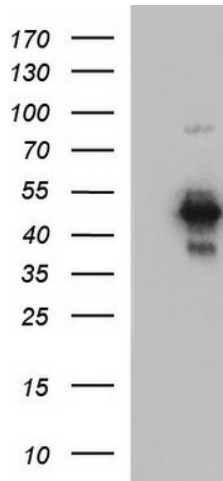
Product data:

Product Type:	Primary Antibodies
Applications:	ELISA, IHC, WB
Recommended Dilution:	WB 1:20000, IHC 1:150,ELISA 1:100-1:2000
Reactivity:	Human
Host:	Rabbit
Isotype:	IgG
Clonality:	Polyclonal
Immunogen:	DNA immunization. This antibody is specific for the N Terminus Region of the target protein.
Formulation:	20 mM Potassium Phosphate, 150 mM Sodium Chloride, pH 7.0
Concentration:	0.94mg/ml
Purification:	Purified from mouse ascites fluids or tissue culture supernatant by affinity chromatography (protein A/G)
Conjugation:	Unconjugated
Storage:	Store at -20°C as received.
Stability:	Stable for 12 months from date of receipt.
Gene Name:	CXADR Ig-like cell adhesion molecule
Database Link:	NP_001329 Entrez Gene 1525 Human P78310
Background:	The protein encoded by this gene is a type I membrane receptor for group B coxsackieviruses and subgroup C adenoviruses. Pseudogenes of this gene are found on chromosomes 15, 18, and 21.
Synonyms:	CAR; CAR4/6; HCAR
Note:	This antibody was generated by SDIX's Genomic Antibody Technology® (GAT). Learn about GAT
Protein Families:	Druggable Genome, Stem cell - Pluripotency, Transmembrane
Protein Pathways:	Viral myocarditis

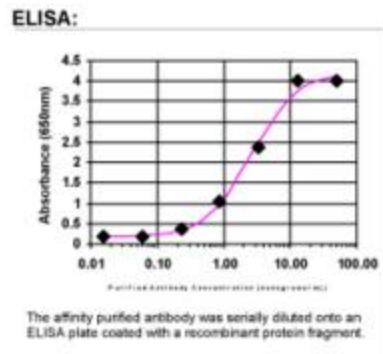


[View online »](#)

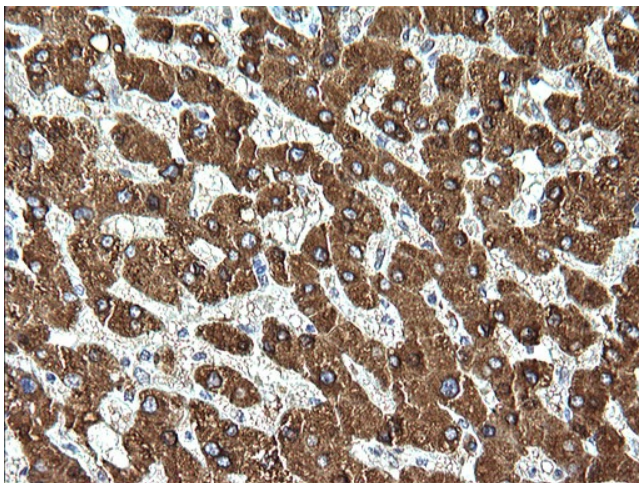
Product images:



HEK293T cells were transfected with the pCMV6-ENTRY control (Cat# [PS100001], Left lane) or pCMV6-ENTRY CXADR (Cat# [RC201564], Right lane) cDNA for 48 hrs and lysed. Equivalent amounts of cell lysates (5 ug per lane) were separated by SDS-PAGE and immunoblotted with anti-CXADR antibody (Cat# TA590736). Positive lysates [LY419998] (100ug) and [LC419998] (20ug) can be purchased separately from OriGene.



ELISA: Coxsackie Adenovirus Receptor Antibody



Immunohistochemical staining of paraffin-embedded Human liver tissue using anti-CXADR rabbit polyclonal antibody. (TA590736)