

## Product datasheet for **TA590731**

### IP10 (CXCL10) Rabbit Polyclonal Antibody

#### Product data:

|                       |   |
|-----------------------|---|
| Product Type:         | Primary Antibodies  |
| Applications:         | ELISA   |
| Recommended Dilution: | ELISA: 1:100-1:2000   |
| Reactivity:           | Human   |
| Host:                 | Rabbit  |
| Isotype:              | IgG   |
| Clonality:            | Polyclonal  |
| Immunogen:            | DNA immunization. This antibody is specific for the entire range of the target protein.                   |
| Formulation:          | 20 mM Potassium Phosphate, 150 mM Sodium Chloride, pH 7.0   |
| Concentration:        | 0.83mg/ml   |
| Purification:         | Purified from mouse ascites fluids or tissue culture supernatant by affinity chromatography (protein A/G) |
| Conjugation:          | Unconjugated  |
| Storage:              | Store at -20°C as received.   |
| Stability:            | Stable for 12 months from date of receipt.  |
| Gene Name:            | C-X-C motif chemokine ligand 10   |
| Database Link:        | <a href="#">NP_001556</a><br><a href="#">Entrez Gene 3627 Human</a><br><a href="#">P02778</a>             |



[View online »](#)

**Background:**

The monoclonal antibody 6D4 recognizes human C-X-C motif chemokine 10 (IP-10), a protein of 98 amino acids. IP-10, also known as CXCL10, functions as ligand for the CXCR3 receptor. IP-10 belongs to the  $\alpha$ -chemokine (C-X-C) family, which can be divided in two subfamilies: (1) potent chemoattractants for neutrophils, like IL-8 and (2) potent chemoattractants for lymphocytes, like the IFN $\gamma$  inducible protein (IP)-10. IP-10 is produced by a wide variety of cell types ranging from neutrophils, dendritic cells and monocytes to hepatocytes, endothelial cells and keratinocytes. The cytokine is reported to be involved in a scala of inflammatory pathologies such as HIV, encephalitis, cutaneous T cell lymphoma, chronic hepatitis, psoriasis and acute anterior uveitis. Various observations strongly suggest a role for the C-X-C chemokines IL-8 and IP-10 in the regulation of angiogenic activity in cancer and in idiopathic pulmonary fibrosis. Furthermore IP-10 is associated with acute rejection processes estimated by the predictive properties of urinary IP-10 expression for the short- and long-term graft function after kidney transplantation.

**Synonyms:**

C7; crg-2; gIP-10; IFI10; INP10; IP-10; mob-1; SCYB10

**Note:**

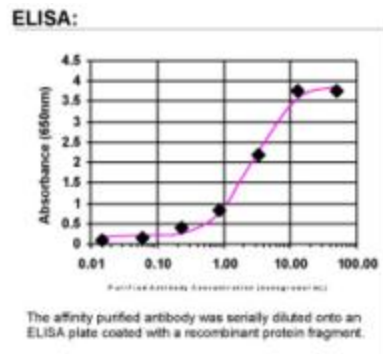
This antibody was generated by SDIX's Genomic Antibody Technology® (GAT). [Learn about GAT](#)

**Protein Families:**

Druggable Genome, Secreted Protein, Transmembrane

**Protein Pathways:**

Chemokine signaling pathway, Cytokine-cytokine receptor interaction, Cytosolic DNA-sensing pathway, RIG-I-like receptor signaling pathway, Toll-like receptor signaling pathway

**Product images:**

ELISA: CXCL10/INP10 Antibody