

Product datasheet for **TA590727**

CD22 Rabbit Polyclonal Antibody

Product data:

Product Type:	Primary Antibodies
Applications:	WB
Recommended Dilution:	WB 1:5000~20000, ELISA 1:100-1:2000
Reactivity:	Human
Host:	Rabbit
Isotype:	IgG
Clonality:	Polyclonal
Immunogen:	DNA immunization. This antibody was made against a protein fragment from the C Terminus Region
Formulation:	20 mM Potassium Phosphate, 150 mM Sodium Chloride, pH 7.0
Concentration:	0.97mg/ml
Purification:	Purified from mouse ascites fluids or tissue culture supernatant by affinity chromatography (protein A/G)
Conjugation:	Unconjugated
Storage:	Store at -20°C as received.
Stability:	Stable for 12 months from date of receipt.
Gene Name:	CD22 molecule
Database Link:	NP_001762 Entrez Gene 933 Human P20273
Background:	CD22, also known as Siglec-2 (sialic acid-binding immunoglobulin-like lectin-2) is a transmembrane glycoprotein binding alpha2,6-linked sialic acid-bearing ligands. Intracellular domain of CD22 recruits protein tyrosine phosphatase SHP-1 through the immunoreceptortyrosine-based inhibitory motifs (ITIMs), thus setting a treshold for B cell receptor-mediated activation. CD22 also regulates B-cell response by involvement in controlling theCD19/CD21-Src-family protein tyrosine kinase amplification pathway and CD40 signaling. CD22 exhibits hallmarks of clathrin-mediated endocytic pathway.
Synonyms:	SIGLEC-2; SIGLEC2



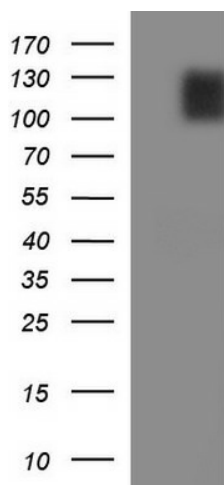
[View online »](#)

Note: This antibody was generated by SDIX's Genomic Antibody Technology® (GAT). [Learn about GAT](#)

Protein Families: Druggable Genome, Transmembrane

Protein Pathways: B cell receptor signaling pathway, Cell adhesion molecules (CAMs), Hematopoietic cell lineage

Product images:



HEK293T cells were transfected with the pCMV6-ENTRY control (Left lane) or pCMV6-ENTRY CD22 ([RC216939], Right lane) cDNA for 48 hrs and lysed. Equivalent amounts of cell lysates (5 ug per lane) were separated by SDS-PAGE and immunoblotted with anti-CD22.