

Product datasheet for **TA590726**

N Cadherin (CDH2) Rabbit Polyclonal Antibody

Product data:

Product Type:	Primary Antibodies
Applications:	ELISA, WB
Recommended Dilution:	WB: 1:5000-1:20000; ELISA: 1:100-1:2000
Reactivity:	Human
Host:	Rabbit
Isotype:	IgG
Clonality:	Polyclonal
Immunogen:	DNA immunization. This antibody is specific for the N Terminus Region of the target protein.
Formulation:	20 mM Potassium Phosphate, 150 mM Sodium Chloride, pH 7.0
Concentration:	1.08mg/ml
Purification:	Purified from mouse ascites fluids or tissue culture supernatant by affinity chromatography (protein A/G)
Conjugation:	Unconjugated
Storage:	Store at -20°C as received.
Stability:	Stable for 12 months from date of receipt.
Gene Name:	cadherin 2
Database Link:	NP_001783 Entrez Gene 1000 Human P19022



[View online »](#)

Background:

Cadherins are members of a multigene family of single chain glycoprotein receptors mediating Ca⁺⁺-dependent cell-cell adhesion.^{1,2,3} The N-terminal part of these molecules is exposed on the external cell surface and contains the putative homophilic binding sites. This is followed by a typical single transmembrane sequence and usually, a cytoplasmic C-terminal tail⁴ which mediates interaction with the microfilament system through molecules such as catenins, plakoglobin, vinculin, and α -actinin. Cadherins which are primarily located in areas of cell-cell contacts, are involved in selective cell sorting and in the mechanical cytoplasmic response. They are implicated in morphogenetic processes, intercellular signalling and tumor invasiveness and metastasis. Multiple cadherins were characterized from diverse species and tissues including E-Cadherin, N-Cadherin (A-CAM), P-Cadherin, V-Cadherin, R-Cadherin and T-Cadherin. Specific antibodies against a highly conserved sequence from the cytoplasmic C-terminal of N-Cadherin have been prepared.^{5,6}

Synonyms:

CD325; CDHN; CDw325; NCAD

Note:

This antibody was generated by SDIX's Genomic Antibody Technology® (GAT). [Learn about GAT](#)

Protein Families:

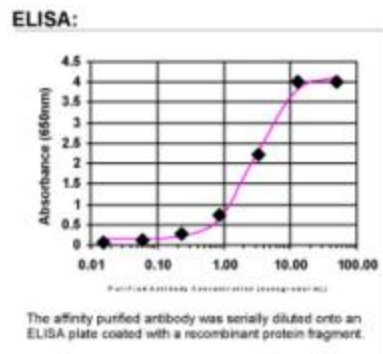
Druggable Genome, ES Cell Differentiation/IPS, Transmembrane

Protein Pathways:

Arrhythmogenic right ventricular cardiomyopathy (ARVC), Cell adhesion molecules (CAMs)

Product images:


Western Blot: N Cadherin Antibody - Western Blot was performed using affinity purified SEQer CDH2 antibody, aa (59-158) antibody. The lanes contain 5-30ug of a whole cell extract. Final concentration of antibodies = 0.1ug/ml (1:10,000 dilution). The blot was probed overnight with the SEQer CDH2 antibody, aa (59-158) antibody. Blot was then washed according to protocol and probed with goat-anti-Rabbit-HRP conjugate at 1:5000 dilution, washed and developed using chemiluminescence (film exposure 5-30sec). The protein was detected as represented by the band shown.



ELISA: N Cadherin Antibody