

## Product datasheet for **TA590717**

### Aminopeptidase A (ENPEP) Rabbit Polyclonal Antibody

#### Product data:

Product Type:	Primary Antibodies
Applications:	ELISA, IHC, WB
Recommended Dilution:	WB 1:20000, IHC 1:150, ELISA 1:100-1:2000
Reactivity:	Human
Host:	Rabbit
Isotype:	IgG
Clonality:	Polyclonal
Immunogen:	DNA immunization. This antibody is specific for the N Terminus Region of the target protein.
Formulation:	20 mM Potassium Phosphate, 150 mM Sodium Chloride, pH 7.0
Concentration:	0.71095 mg/ml
Purification:	Purified from mouse ascites fluids or tissue culture supernatant by affinity chromatography (protein A/G)
Conjugation:	Unconjugated
Storage:	Store at -20°C as received.
Stability:	Stable for 12 months from date of receipt.
Gene Name:	glutamyl aminopeptidase
Database Link:	<a href="#">NP_001968</a> <a href="#">Entrez Gene 2028 Human Q07075</a>
Background:	Aminopeptidase A is a zinc-dependent metallopeptidase that selectively cleaves N-terminal Glu, or Asp residues from peptides. In mice, it is expressed on early B cells and on a subset of thymic cortical epithelial cells, but not on mature lymphocytes. Additionally, it is expressed on endothelial cells, intestinal epithelium, proximal renal tubules, and other non-hemopoietic tissues. In humans, angiotensin II is the the best-defined biologically active substrate of APA. Although its role in the immune response is still uncertain, its expression on renal cell carcinoma has been the focus of some cancer research studies.
Synonyms:	APA; CD249; gp160



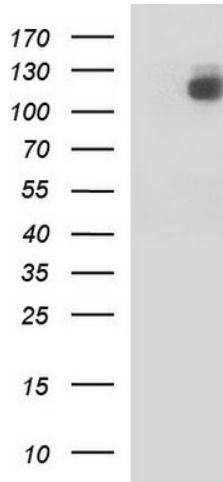
[View online »](#)

**Note:** This antibody was generated by SDIX's Genomic Antibody Technology® (GAT). [Learn about GAT](#)

**Protein Families:** Druggable Genome, ES Cell Differentiation/IPS, Protease, Transmembrane

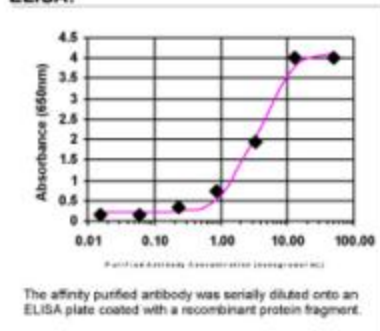
**Protein Pathways:** Renin-angiotensin system

**Product images:**

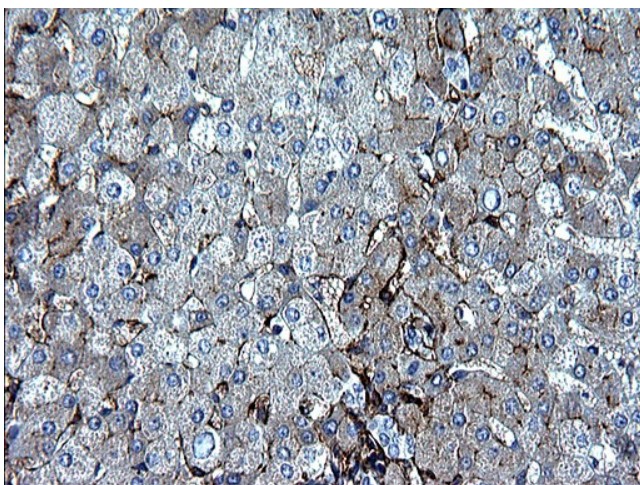


HEK293T cells were transfected with the pCMV6-ENTRY control (Left lane) or pCMV6-ENTRY ENPEP ([RC210521], Right lane) cDNA for 48 hrs and lysed. Equivalent amounts of cell lysates (5 ug per lane) were separated by SDS-PAGE and immunoblotted with anti-ENPEP. Positive lysates [LY419610] (100ug) and [LC419610] (20ug) can be purchased separately from OriGene.

**ELISA:**



ELISA: Aminopeptidase A / APA Antibody



Immunohistochemical staining of paraffin-embedded Human liver tissue using anti-ENPEP rabbit polyclonal antibody. (TA590717)