

## Product datasheet for **TA590714**

### Factor XIII (F13B) Rabbit Polyclonal Antibody

#### Product data:

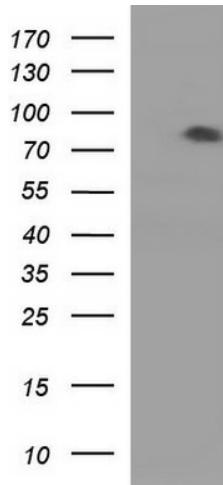
Product Type:	Primary Antibodies
Applications:	ELISA, WB
Recommended Dilution:	WB 1:20000, ELISA 1:100-1:2000
Reactivity:	Human
Host:	Rabbit
Isotype:	IgG
Clonality:	Polyclonal
Immunogen:	DNA immunization. This antibody is specific for the C Terminus Region of the target protein.
Formulation:	20 mM Potassium Phosphate, 150 mM Sodium Chloride, pH 7.0
Concentration:	1.00219 mg/ml
Purification:	Purified from mouse ascites fluids or tissue culture supernatant by affinity chromatography (protein A/G)
Conjugation:	Unconjugated
Storage:	Store at -20°C as received.
Stability:	Stable for 12 months from date of receipt.
Gene Name:	coagulation factor XIII B chain
Database Link:	<a href="#">NP_001985</a> <a href="#">Entrez Gene 2165 Human</a> <a href="#">P05160</a>
Background:	Factor XIII is activated by thrombin and calcium ions to a transglutaminase that catalyzes the formation of gamma-glutamyl- epsilon-lysine cross-links between fibrin chains, thus stabilizing the fibrin clot. It also cross-links alpha-2-plasmin inhibitor, or fibronectin, to the alpha chains of fibrin. Factor XIII belongs to the transglutaminase family.
Synonyms:	FXIIIB
Note:	This antibody was generated by SDIX's Genomic Antibody Technology® (GAT). <a href="#">Learn about GAT</a>
Protein Families:	Druggable Genome



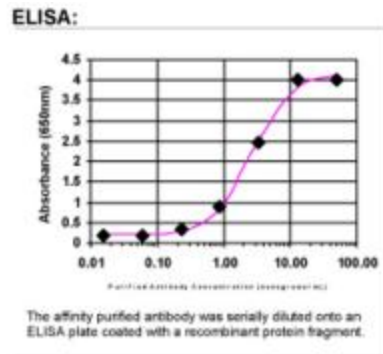
[View online »](#)

Protein Pathways: Complement and coagulation cascades

**Product images:**



HEK293T cells were transfected with the pCMV6-ENTRY control (Left lane) or pCMV6-ENTRY F13B ([RC219609], Right lane) cDNA for 48 hrs and lysed. Equivalent amounts of cell lysates (5 ug per lane) were separated by SDS-PAGE and immunoblotted with anti-F13B. Positive lysates [LY419598] (100ug) and [LC419598] (20ug) can be purchased separately from OriGene.



ELISA: Factor XIII Antibody