

## Product datasheet for **TA590713**

### FES Rabbit Polyclonal Antibody

#### Product data:

Product Type:	Primary Antibodies
Applications:	ELISA, WB
Recommended Dilution:	WB 1:20000, ELISA 1:100-1:2000
Reactivity:	Human
Host:	Rabbit
Isotype:	IgG
Clonality:	Polyclonal
Immunogen:	DNA immunization. This antibody is specific for the Middle Region of the target protein.
Formulation:	20 mM Potassium Phosphate, 150 mM Sodium Chloride, pH 7.0
Concentration:	0.83mg/ml
Purification:	Purified from mouse ascites fluids or tissue culture supernatant by affinity chromatography (protein A/G)
Conjugation:	Unconjugated
Storage:	Store at -20°C as received.
Stability:	Stable for 12 months from date of receipt.
Gene Name:	FES proto-oncogene, tyrosine kinase
Database Link:	<a href="#">NP_001996</a> <a href="#">Entrez Gene 2242 Human</a> <a href="#">P07332</a>



[View online »](#)

**Background:** FES (feline sarcoma oncogene) and Fer are the only two members of a unique family of cytoplasmic protein tyrosine kinases. FES and Fer contain a central Src homology-2 (SH2) domain and a carboxy-terminal tyrosine kinase catalytic domain. They are structurally distinguished from other members of cytoplasmic protein tyrosine kinase subfamilies by the presence of amino-terminal Fer/CIP4 homology and coiled-coil domains. FES was originally identified as an oncogene from avian and feline retroviruses. Human c-Fes has been implicated in myeloid, vascular endothelial and neuronal cell differentiation. FES has tyrosine-specific protein kinase activity and that activity is required for maintenance of cellular transformation. Mutations may activate the FES kinase and thereby contribute to cancer. However, recent data strongly suggests that the c-FES protein-tyrosine kinase is a tumor suppressor rather than a dominant oncogene in colorectal cancer.

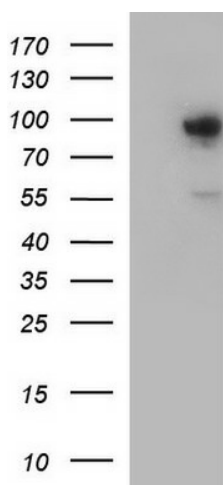
**Synonyms:** FPS

**Note:** This antibody was generated by SDIX's Genomic Antibody Technology® (GAT). [Learn about GAT](#)

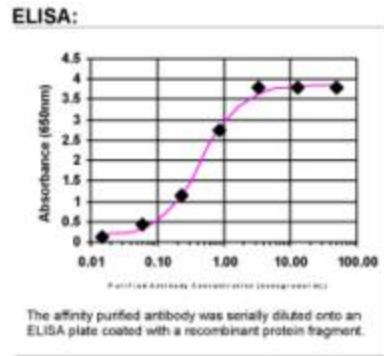
**Protein Families:** Druggable Genome, Protein Kinase

**Protein Pathways:** Axon guidance

### Product images:



HEK293T cells were transfected with the pCMV6-ENTRY control (Cat# [PS100001], Left lane) or pCMV6-ENTRY FES (Cat# [RC206408], Right lane) cDNA for 48 hrs and lysed. Equivalent amounts of cell lysates (5 ug per lane) were separated by SDS-PAGE and immunoblotted with anti-FES (Cat# TA590713). Positive lysates [LY419591] (100ug) and [LC419591] (20ug) can be purchased separately from OriGene.



ELISA: FES Antibody