

Product datasheet for **TA590709**

CFHL1 (CFHR1) Rabbit Polyclonal Antibody

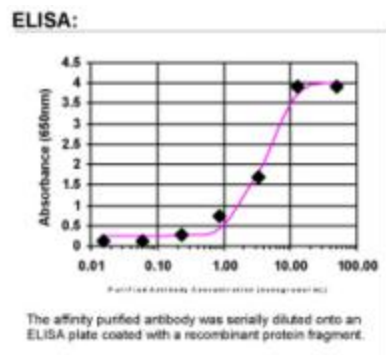
Product data:

Product Type:	Primary Antibodies
Applications:	ELISA
Recommended Dilution:	ELISA: 1:100-1:2000
Reactivity:	Human
Host:	Rabbit
Isotype:	IgG
Clonality:	Polyclonal
Immunogen:	DNA immunization. This antibody is specific for the N Terminus Region of the target protein.
Formulation:	20 mM Potassium Phosphate, 150 mM Sodium Chloride, pH 7.0
Concentration:	0.99124 mg/ml
Purification:	Purified from mouse ascites fluids or tissue culture supernatant by affinity chromatography (protein A/G)
Conjugation:	Unconjugated
Storage:	Store at -20°C as received.
Stability:	Stable for 12 months from date of receipt.
Gene Name:	complement factor H related 1
Database Link:	NP_002104 Entrez Gene 3078 Human Q03591
Background:	CFHL1 might be involved in complement regulation. CFHL1 can associate with lipoproteins and may play a role in lipid metabolism.
Synonyms:	CFHL; CFHL1; CFHL1P; CFHR1P; FHR1; H36-1; H36-2; HFL1; HFL2
Note:	This antibody was generated by SDIX's Genomic Antibody Technology® (GAT). Learn about GAT
Protein Families:	Secreted Protein



[View online »](#)

Product images:



ELISA: CFHL1 Antibody - Affinity Purified