

Product datasheet for **TA590691**

MAS1 Rabbit Polyclonal Antibody

Product data:

Product Type:	Primary Antibodies
Applications:	ELISA
Recommended Dilution:	ELISA: 1:100-1:2000
Reactivity:	Human
Host:	Rabbit
Isotype:	IgG
Clonality:	Polyclonal
Immunogen:	DNA immunization. This antibody is specific for the C Terminus Region of the target protein.
Formulation:	20 mM Potassium Phosphate, 150 mM Sodium Chloride, pH 7.0
Concentration:	0.84mg/ml
Purification:	Purified from mouse ascites fluids or tissue culture supernatant by affinity chromatography (protein A/G)
Conjugation:	Unconjugated
Storage:	Store at -20°C as received.
Stability:	Stable for 12 months from date of receipt.
Gene Name:	MAS1 proto-oncogene, G protein-coupled receptor
Database Link:	NP_002368 Entrez Gene 4142 Human P04201
Background:	The MAS1 product is highly similar to other MRG receptors. This receptor has been suggested to affect the blood pressure control and body fluid homeostasis in the renin-angiotensin system. Mas proto-oncogene has been reported in brain, breast, eye, heart, kidney, and testis. The MAS1 protein may be a receptor that, when activated, modulates a critical component in a growth regulating pathway to bring about oncogenic effects.
Synonyms:	MAS; MGRA
Note:	This antibody was generated by SDIX's Genomic Antibody Technology® (GAT). Learn about GAT

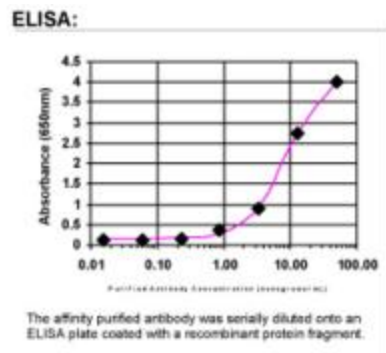


[View online »](#)

Protein Families: Druggable Genome, GPCR, Transmembrane

Protein Pathways: Neuroactive ligand-receptor interaction, Renin-angiotensin system

Product images:



ELISA: MAS1 Antibody