

Product datasheet for **TA590687**

MMP3 Rabbit Polyclonal Antibody

Product data:

Product Type:	Primary Antibodies
Applications:	ELISA, IHC, WB
Recommended Dilution:	WB 1:20000, IHC 1:150,ELISA 1:100-1:2000
Reactivity:	Human
Host:	Rabbit
Isotype:	IgG
Clonality:	Polyclonal
Immunogen:	DNA immunization. This antibody is specific for the Middle Region of the target protein.
Formulation:	20 mM Potassium Phosphate, 150 mM Sodium Chloride, pH 7.0
Concentration:	1.12mg/ml
Purification:	Purified from mouse ascites fluids or tissue culture supernatant by affinity chromatography (protein A/G)
Conjugation:	Unconjugated
Storage:	Store at -20°C as received.
Stability:	Stable for 12 months from date of receipt.
Gene Name:	matrix metalloproteinase 3
Database Link:	NP_002413 Entrez Gene 4314 Human P08254



[View online »](#)

Background:

Effective inhibitors of matrix metalloproteinases (MMPs), a family of connective tissue-degrading enzymes, could be useful for the treatment of diseases such as cancer, multiple sclerosis, and arthritis (1). Matrix metalloproteinase-3 (MMP-3) is a protein involved in tumor invasion and metastasis. MMP3 (stromelysin) is a secreted metalloprotease with a wide range of substrate specificities. MMP3 is synthesized in a proenzyme form with a calculated size of 54 kDa and a 17-amino acid long signal peptide. Data indicate that the expression and the possible involvement of secreted metalloproteases in tumorigenesis result from a specific interaction between the transforming factor and the target cell, which may vary in different species (2). In neural studies, matrix metalloproteinase-3 (MMP-3) was newly induced and activated in stressed dopamine cells, and the active form of MMP-3 (actMMP-3) was released into the medium. The released actMMP-3, as well as catalytically active recombinant MMP-3 (cMMP-3) led to microglial activation and superoxide generation in microglia and enhanced DA cell death. (3).

Synonyms:

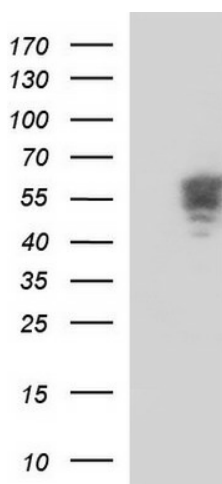
CHDS6; MMP-3; SL-1; STMY; STMY1; STR1

Note:

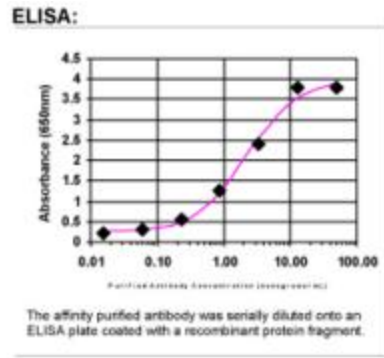
This antibody was generated by SDIX's Genomic Antibody Technology® (GAT). [Learn about GAT](#)

Protein Families:

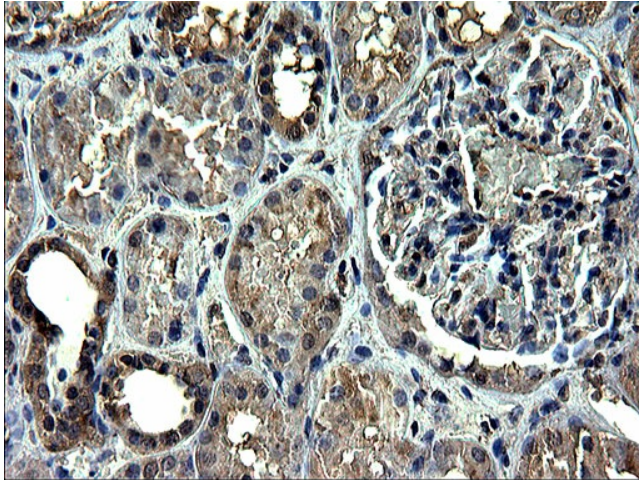
Druggable Genome, Protease

Product images:

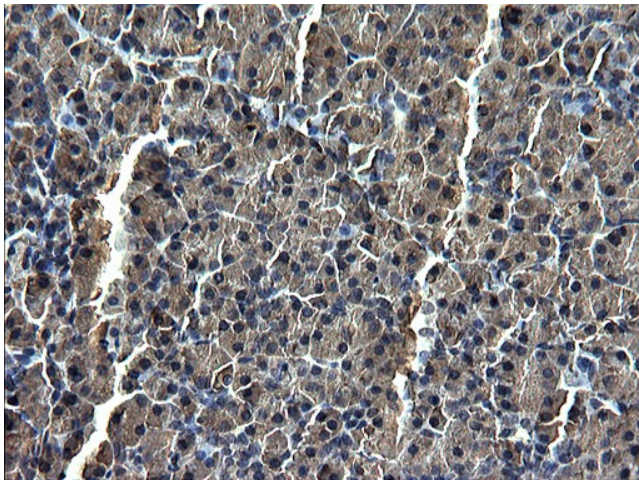
HEK293T cells were transfected with the pCMV6-ENTRY control (Left lane) or pCMV6-ENTRY MMP3 ([RC210235], Right lane) cDNA for 48 hrs and lysed. Equivalent amounts of cell lysates (5 ug per lane) were separated by SDS-PAGE and immunoblotted with anti-MMP3. Positive lysates [LY419341] (100ug) and [LC419341] (20ug) can be purchased separately from OriGene.



ELISA: MMP3 Antibody



Immunohistochemical staining of paraffin-embedded Human Kidney tissue using anti-MMP3 Rabbit Polyclonal antibody. (TA590687)



Immunohistochemical staining of paraffin-embedded Human pancreas tissue using anti-MMP3 Rabbit Polyclonal antibody. (TA590687)