

Product datasheet for **TA590679**

PCK1 Rabbit Polyclonal Antibody

Product data:

Product Type:	Primary Antibodies
Applications:	ELISA, IHC, WB
Recommended Dilution:	WB 1:5000~20000, IHC 1:150, ELISA 1:100-1:2000
Reactivity:	Human, Rat, Monkey, Mouse
Host:	Rabbit
Isotype:	IgG
Clonality:	Polyclonal
Immunogen:	DNA immunization. This antibody is specific for the Middle Region of the target protein.
Formulation:	20 mM Potassium Phosphate, 150 mM Sodium Chloride, pH 7.0
Concentration:	1.05mg/ml
Purification:	Purified from mouse ascites fluids or tissue culture supernatant by affinity chromatography (protein A/G)
Conjugation:	Unconjugated
Storage:	Store at -20°C as received.
Stability:	Stable for 12 months from date of receipt.
Gene Name:	phosphoenolpyruvate carboxykinase 1
Database Link:	NP_002582 Entrez Gene 18534 Mouse Entrez Gene 362282 Rat Entrez Gene 696207 Monkey Entrez Gene 5105 Human P35558
Background:	Major sites of expression of PEP Carboxylase are liver, kidney and adipocytes. PEP carboxylase, along with GTP, catalyzes the formation of phosphoenolpyruvate from oxaloacetate, with the release of carbon dioxide and GDP. The expression of this gene can be regulated by insulin, glucocorticoids, glucagon, cAMP, and diet. A mitochondrial isozyme of the encoded protein has also been characterized.
Synonyms:	PEPCK-C; PEPCK1; PEPCKC
Note:	This antibody was generated by SDIX's Genomic Antibody Technology® (GAT). Learn about GAT

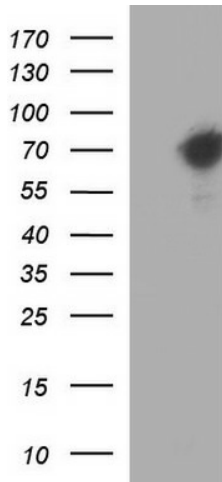


[View online »](#)

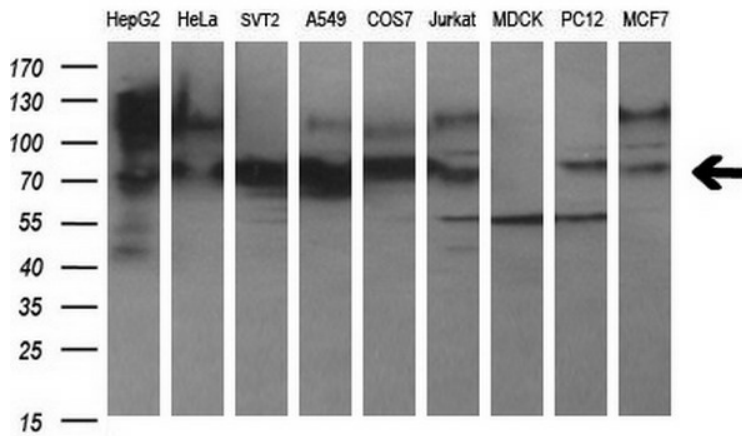
Protein Families: Druggable Genome

Protein Pathways: Adipocytokine signaling pathway, Citrate cycle (TCA cycle), Glycolysis / Gluconeogenesis, Insulin signaling pathway, Metabolic pathways, PPAR signaling pathway, Pyruvate metabolism

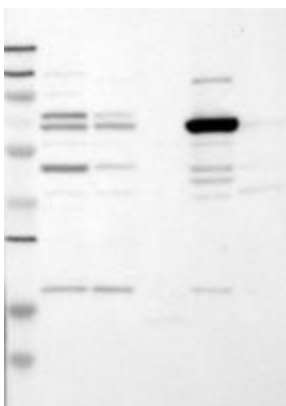
Product images:



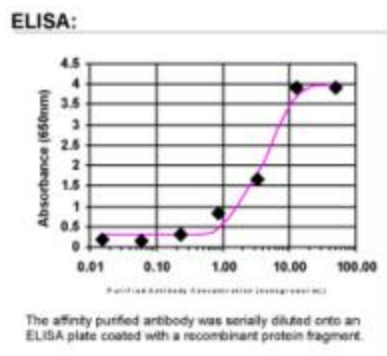
HEK293T cells were transfected with the pCMV6-ENTRY control (Cat# [PS100001], Left lane) or pCMV6-ENTRY PCK1 (Cat# [RC204758], Right lane) cDNA for 48 hrs and lysed. Equivalent amounts of cell lysates (5 ug per lane) were separated by SDS-PAGE and immunoblotted with anti-PCK1 (Cat# TA590679). Positive lysates [LY419231] (100ug) and [LC419231] (20ug) can be purchased separately from OriGene.



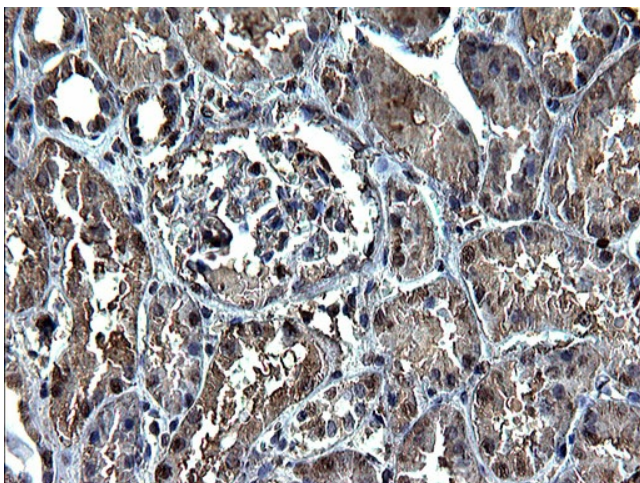
Western blot analysis of extracts (35ug) from 9 different cell lines by using anti-PCK1 polyclonal antibody (HepG2: human; HeLa: human; SVT2: mouse; A549: human; COS7: monkey; Jurkat: human; MDCK: canine; PC12: rat; MCF7: human).



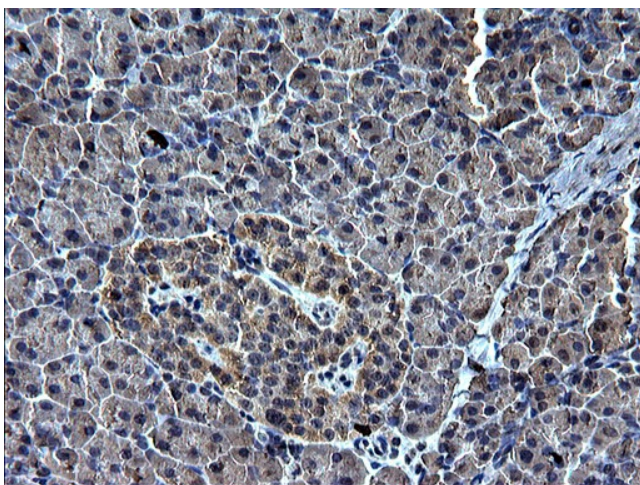
Western Blot: PCK1 Antibody - Samples: Lane 1, Marker: 250, 130, 95, 72, 55, 36, 28, 17, 11 Lane 2, RT-4 Lane 3, U-251MG sp Lane 4, Human Plasma Lane 5, Liver Lane 6, Tonsil, Target weight: 69 Validation score: 2 Validation description: Supportive - Band of predicted size in kDa (+/- 20%) with additional bands present.



ELISA: PCK1 Antibody



Immunohistochemical staining of paraffin-embedded Human Kidney tissue using anti-PCK1 Rabbit Polyclonal antibody. (TA590679). Heat-induced epitope retrieval by EDTA solution buffer pH 8.0 at 120°C for 3 min.



Immunohistochemical staining of paraffin-embedded Human pancreas tissue using anti-PCK1 Rabbit Polyclonal antibody. (TA590679). Heat-induced epitope retrieval by EDTA solution buffer pH 8.0 at 120°C for 3 min.