

Name: Rabbit Polyclonal PLGF Antibody
Product Data Sheet - GAT**Catalog: TA590677**

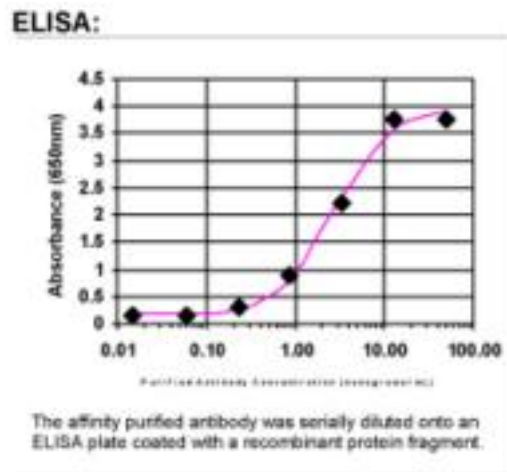
Components:	• Rabbit Polyclonal PLGF Antibody (TA590677)
Amount:	100ug
Immunogen:	DNA immunization. This antibody is specific for the C Terminus Region of the target protein.
Host:	Rabbit
Isotype:	IgG
Species Reactivity:	Human
Guaranteed Applications:	ELISA
Suggested Dilutions:	WB: 1:5000-1:20000; ELISA: 1:100-1:2000; IHC: 1:10-1:2000; IHC-P 1:250-1:2000
Concentration:	0.7mg/ml
Buffer:	20 mM Potassium Phosphate, 150 mM Sodium Chloride, pH 7.0
Purification:	The fragment used for DNA immunization was expressed in E.coli and the purified protein fragment was used for affinity purification of the antibody.
Storage Condition:	Shipped at -20C or with ice packs. Upon delivery store at -20C. Dilute in PBS (pH7.3) if necessary. Stable for 12 months from date of receipt. Avoid repeated freeze-thaws.

Target

Target Name:	placental growth factor
Alternative Name:	D12S1900 PGFL PIGF PLGF PIGF-2 SHGC-10760
Database Link:	NP_002623 Entrez Gene 5228 Human
Function:	

This product is to be used for laboratory only. Not for diagnostic or therapeutic use.

Validation Data



ELISA: Placental growth factor Antibody - Affinity Purified

* More validation images may be available on our website: <http://www.origene.com/antibody/TA590677.aspx>

This product is to be used for laboratory only. Not for diagnostic or therapeutic use.

© 2017 OriGene Technologies, Inc. 9620 Medical Center Dr., Suite 200, Rockville, MD 20850
