

## Product datasheet for **TA590676**

### MASPIN (SERPINB5) Rabbit Polyclonal Antibody

#### Product data:

|                       |   |
|-----------------------|---|
| Product Type:         | Primary Antibodies  |
| Applications:         | ELISA, IHC, WB  |
| Recommended Dilution: | WB 1:20000, IHC 1:150, ELISA 1:100-1:2000   |
| Reactivity:           | Human   |
| Host:                 | Rabbit  |
| Isotype:              | IgG   |
| Clonality:            | Polyclonal  |
| Immunogen:            | DNA immunization. This antibody is specific for the C Terminus Region of the target protein.              |
| Formulation:          | 20 mM Potassium Phosphate, 150 mM Sodium Chloride, pH 7.0   |
| Concentration:        | 0.88mg/ml   |
| Purification:         | Purified from mouse ascites fluids or tissue culture supernatant by affinity chromatography (protein A/G) |
| Conjugation:          | Unconjugated  |
| Storage:              | Store at -20°C as received.   |
| Stability:            | Stable for 12 months from date of receipt.  |
| Gene Name:            | serpin family B member 5  |
| Database Link:        | <a href="#">NP_002630</a><br><a href="#">Entrez Gene 5268 Human P36952</a>                                |

**Background:** Maspin is structurally a serine protease inhibitor (serpin) that was initially isolated from normal human mammary epithelial cells. Serpins are a family of proteins that inhibit chymotrypsin-like serine proteinases. Serpins control activated proteinases and several are involved in the regulation of cell death. Maspin is found in the extracellular matrix and at the plasma membrane. Maspin has been shown to act at the cell surface to block cell motility and inhibit invasion of breast and prostate cancer cells. Maspin is present in normal mammary epithelial cells but is absent in many tumor cell lines, yet no major structural alterations of the Maspin gene have been identified in tumor cells. Similarly, Maspin is expressed in normal prostate cells and downregulated or absent in prostate tumor cells.



[View online »](#)

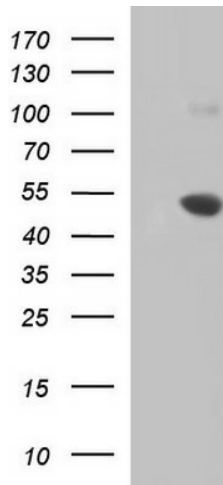
**Synonyms:** maspin; PI5

**Note:** This antibody was generated by SDIX's Genomic Antibody Technology® (GAT). [Learn about GAT](#)

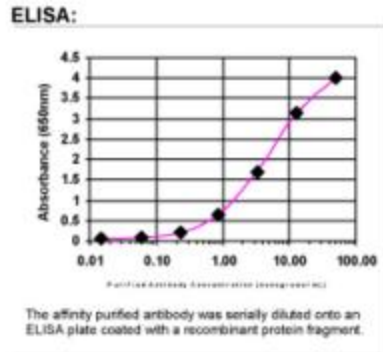
**Protein Families:** Druggable Genome, Secreted Protein

**Protein Pathways:** p53 signaling pathway

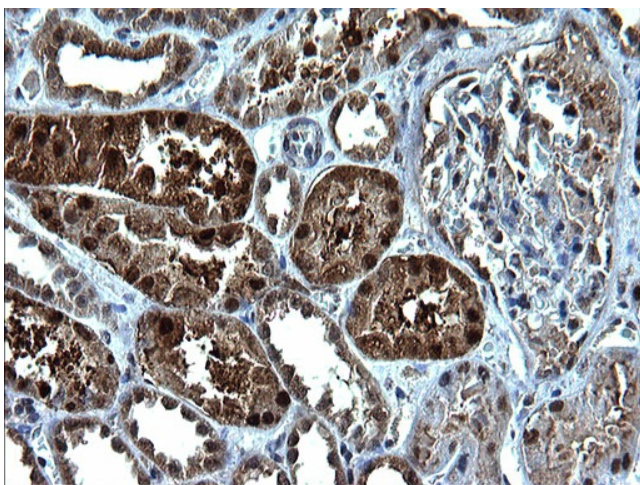
**Product images:**



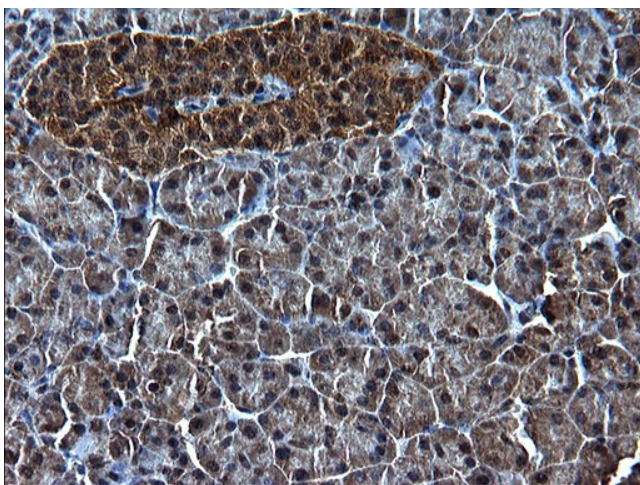
HEK293T cells were transfected with the pCMV6-ENTRY control (Cat# [PS100001], Left lane) or pCMV6-ENTRY SERPINB5 (Cat# [RC224287], Right lane) cDNA for 48 hrs and lysed. Equivalent amounts of cell lysates (5 ug per lane) were separated by SDS-PAGE and immunoblotted with anti-SER antibody (Cat# TA590676). Positive lysates [LY419192] (100ug) and [LC419192] (20ug) can be purchased separately from OriGene.



ELISA: MASPIN Antibody



Immunohistochemical staining of paraffin-embedded Human Kidney tissue using anti-SERPINB5 Rabbit Polyclonal antibody. (TA590676)



Immunohistochemical staining of paraffin-embedded Human pancreas tissue using anti-SERPINB5 Rabbit Polyclonal antibody. (TA590676)