

## Product datasheet for **TA590670**

### PTPRB Rabbit Polyclonal Antibody

#### Product data:

Product Type:	Primary Antibodies
Applications:	ELISA
Recommended Dilution:	ELISA: 1:5000-1:20000
Reactivity:	Human
Host:	Rabbit
Isotype:	IgG
Clonality:	Polyclonal
Immunogen:	DNA immunization. This antibody is specific for the N Terminus Region of the target protein.
Formulation:	20 mM Potassium Phosphate, 150 mM Sodium Chloride, pH 7.0
Concentration:	1 mg/ml
Purification:	Purified from mouse ascites fluids or tissue culture supernatant by affinity chromatography (protein A/G)
Conjugation:	Unconjugated
Storage:	Store at -20°C as received.
Stability:	Stable for 12 months from date of receipt.
Gene Name:	protein tyrosine phosphatase receptor type B
Database Link:	<a href="#">NP_002828</a> <a href="#">Entrez Gene 5787 Human</a> <a href="#">P23467</a>
Background:	PTPRB is a member of the protein tyrosine phosphatase (PTP) family. The family comprises at least 37 proteins, characterized by a catalytic phosphatase domain of approximately 240 amino acids, and includes both transmembrane and cytosolic enzymes. PTP1B is a transmembrane PTP. The PTPs have high substrate specificity for phosphotyrosyl proteins, at the primary sequence level sharing little similarity with the protein serine phosphatases, protein threonine phosphatases, or the acid and alkaline phosphatases. PTP beta interacts with and regulates the tyrosine phosphorylation level of catenins, which are critical in physiological and pathological events such as cell migration, adhesion and transformation.
Synonyms:	HPTP-BETA; HPTPB; PTPB; R-PTP-BETA; VEPTP



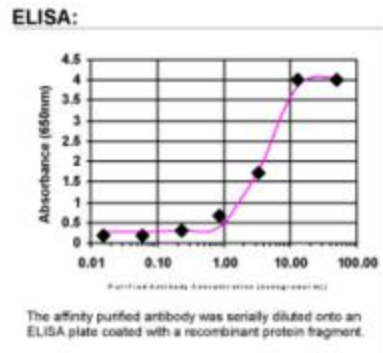
[View online »](#)

**Note:** This antibody was generated by SDIX's Genomic Antibody Technology® (GAT). [Learn about GAT](#)

**Protein Families:** Druggable Genome, Phosphatase

**Protein Pathways:** Adherens junction

### Product images:



ELISA: PTPRB Antibody