

## Product datasheet for **TA590666**

### Syndecan 1 (SDC1) Rabbit Polyclonal Antibody

#### Product data:

Product Type:	Primary Antibodies
Applications:	ELISA
Recommended Dilution:	ELISA: 1:100-1:2000
Reactivity:	Human
Host:	Rabbit
Isotype:	IgG
Clonality:	Polyclonal
Immunogen:	DNA immunization. This antibody is specific for the Middle Region of the target protein.
Formulation:	20 mM Potassium Phosphate, 150 mM Sodium Chloride, pH 7.0
Concentration:	1.0146 mg/ml
Purification:	Purified from mouse ascites fluids or tissue culture supernatant by affinity chromatography (protein A/G)
Conjugation:	Unconjugated
Storage:	Store at -20°C as received.
Stability:	Stable for 12 months from date of receipt.
Gene Name:	syndecan 1
Database Link:	<a href="#">NP_002988</a> <a href="#">Entrez Gene 6382 Human P18827</a>
Background:	CD138 / Syndecan 1 is a transmembrane heparin sulphate proteoglycan which is made up of one core protein and five glycosaminoglycan. CD138 is expected to play a role in cell adhesion. It is expressed on the surface of pre B cells and plasma cells but is absent from mature B cells. It is a selective marker for B cell lymphoblastic leukemia and lymphoplasmacytoid leukemia. It is lost from the apoptotic myeloma cells; hence is a useful marker for viable myeloma cells. This antibody stains all plasma cells and plasma cell lines. No staining of other leucocytes is seen in peripheral blood or bone marrow, although some ALL cell lines express the antigen weakly. Some staining of epithelial and endothelial cells may be seen in immunohistology.



[View online »](#)

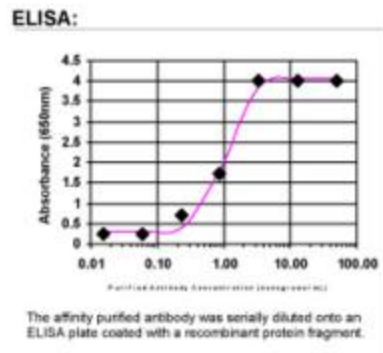
**Synonyms:** CD138; SDC; SYND1; syndecan

**Note:** This antibody was generated by SDIX's Genomic Antibody Technology® (GAT). [Learn about GAT](#)

**Protein Families:** Druggable Genome, ES Cell Differentiation/IPS, Transmembrane

**Protein Pathways:** Cell adhesion molecules (CAMs), ECM-receptor interaction

**Product images:**



ELISA: Syndecan 1 Antibody