

Product datasheet for **TA590656**

VEGFB Rabbit Polyclonal Antibody

Product data:

Product Type:	Primary Antibodies
Applications:	ELISA, WB
Recommended Dilution:	WB 1:5000~20000, ELISA 1:100-1:2000
Reactivity:	Human
Host:	Rabbit
Isotype:	IgG
Clonality:	Polyclonal
Immunogen:	DNA immunization. This antibody is specific for the Middle Region of the target protein.
Formulation:	20 mM Potassium Phosphate, 150 mM Sodium Chloride, pH 7.0
Concentration:	1.01mg/ml
Purification:	Purified from mouse ascites fluids or tissue culture supernatant by affinity chromatography (protein A/G)
Conjugation:	Unconjugated
Storage:	Store at -20°C as received.
Stability:	Stable for 12 months from date of receipt.
Gene Name:	vascular endothelial growth factor B
Database Link:	NP_003368 Entrez Gene 7423 Human P49765
Background:	VEGFB 186 is an isoform of VEGFB (Vascular Endothelial Growth Factor B), a member of the vascular endothelial growth factor (VEGF) family. It is a growth factor for endothelial cells. Both isoforms of VEGFB show strong homology to VEGF at their amino termini, whereas the VEGFB167 isoform binds heparin, the C terminus of VEGFB-186 has no heparin binding domain, is less basic and more hydrophobic, and has no similarity to any published sequence. VEGFB 186 is secreted as a disulfide-linked homodimer and that, like VEGFB 167, this isoform can form disulfide-linked heterodimers with VEGF.
Synonyms:	VEGFL; VRF



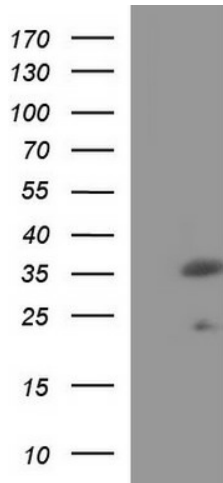
[View online »](#)

Note: This antibody was generated by SDIX's Genomic Antibody Technology® (GAT). [Learn about GAT](#)

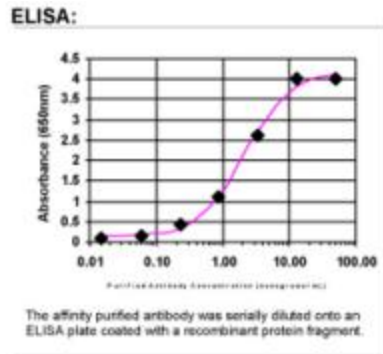
Protein Families: Druggable Genome, Secreted Protein

Protein Pathways: Bladder cancer, Cytokine-cytokine receptor interaction, Focal adhesion, mTOR signaling pathway, Pancreatic cancer, Pathways in cancer, Renal cell carcinoma

Product images:



HEK293T cells were transfected with the pCMV6-ENTRY control (Left lane) or pCMV6-ENTRY VEGFB ([RC202426], Right lane) cDNA for 48 hrs and lysed. Equivalent amounts of cell lysates (5 ug per lane) were separated by SDS-PAGE and immunoblotted with anti-VEGFB. Positive lysates [LY418732] (100ug) and [LC418732] (20ug) can be purchased separately from OriGene.



ELISA: VEGFB Antibody