

## Product datasheet for **TA590653**

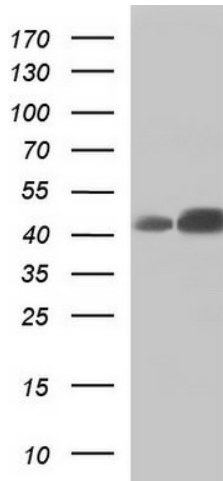
### DEK Rabbit Polyclonal Antibody

#### Product data:

Product Type:	Primary Antibodies
Applications:	ELISA, IHC, WB
Recommended Dilution:	WB 1:20000, IHC 1:150,ELISA 1:100-1:2000
Reactivity:	Human
Host:	Rabbit
Isotype:	IgG
Clonality:	Polyclonal
Immunogen:	DNA immunization. This antibody is specific for the C Terminus Region of the target protein.
Formulation:	20 mM Potassium Phosphate, 150 mM Sodium Chloride, pH 7.0
Concentration:	0.83mg/ml
Purification:	Purified from mouse ascites fluids or tissue culture supernatant by affinity chromatography (protein A/G)
Conjugation:	Unconjugated
Storage:	Store at -20°C as received.
Stability:	Stable for 12 months from date of receipt.
Gene Name:	DEK proto-oncogene
Database Link:	<a href="#">NP_003463</a> <a href="#">Entrez Gene 7913 Human P35659</a>
Background:	DEK is a chromatin-binding protein that may serve as an architectural protein at promoter or enhancer sites of particular genes and may be involved in the regulation of transcription and mRNA processing. DEK has been identified as an oncoprotein and an autoantigen.
Synonyms:	D6S231E
Note:	This antibody was generated by SDIX's Genomic Antibody Technology® (GAT). <a href="#">Learn about GAT</a>
Protein Families:	Druggable Genome, Transcription Factors



[View online »](#)

**Product images:**


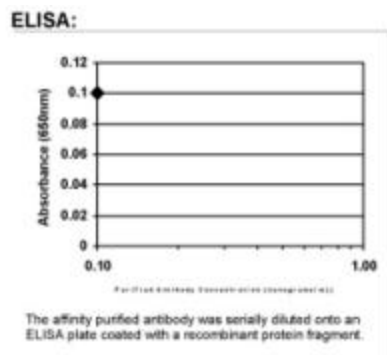
HEK293T cells were transfected with the pCMV6-ENTRY control (Cat# [PS100001], Left lane) or pCMV6-ENTRY DEK (Cat# [RC205754], Right lane) cDNA for 48 hrs and lysed. Equivalent amounts of cell lysates (5 ug per lane) were separated by SDS-PAGE and immunoblotted with anti-DEK(Cat# TA590653). Positive lysates [LY418656] (100ug) and [LC418656] (20ug) can be purchased separately from OriGene.



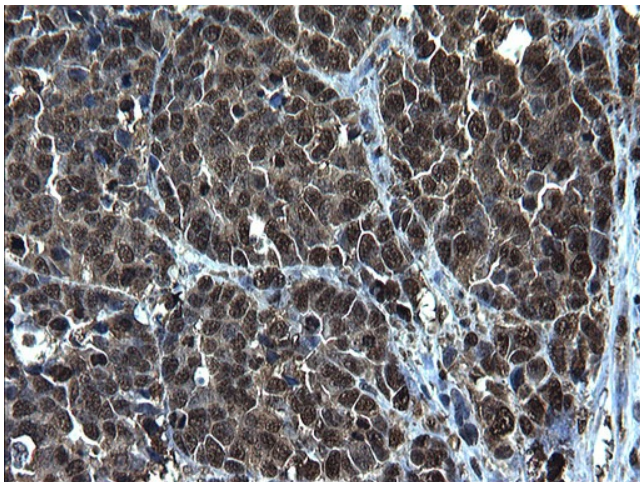
Western Blot: DEK Antibody - Western Blot was performed using affinity purified SEQer DEK antibody, aa (226-325) antibody. The lanes contain 5-30ug of a whole cell extract. Final concentration of antibodies = 0.1ug/ml (1:10,000 dilution). The blot was probed overnight with the SEQer DEK antibody, aa (226-325) antibody. Blot was then washed according to protocol and probed with goat-anti-Rabbit-HRP conjugate at 1:5000 dilution, washed and developed using chemiluminescence (film exposure 5-30sec). The protein was detected as represented by the band shown.



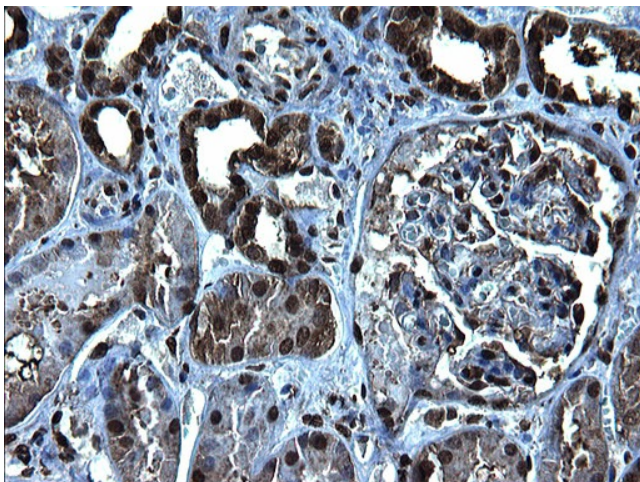
Western Blot: DEK Antibody - Samples: Lane 1, Marker: 250, 130, 95, 72, 55, 36, 28, 17, 11 Lane 2, RT-4 Lane 3, U-251MG sp Lane 4, Human Plasma Lane 5, Liver Lane 6, Tonsil Target weight: 48, 43 (splice variants) Validation score: 2 Validation description: Supportive - Band of predicted size in kDa (+/-20%) with additional bands present.



ELISA: DEK Antibody

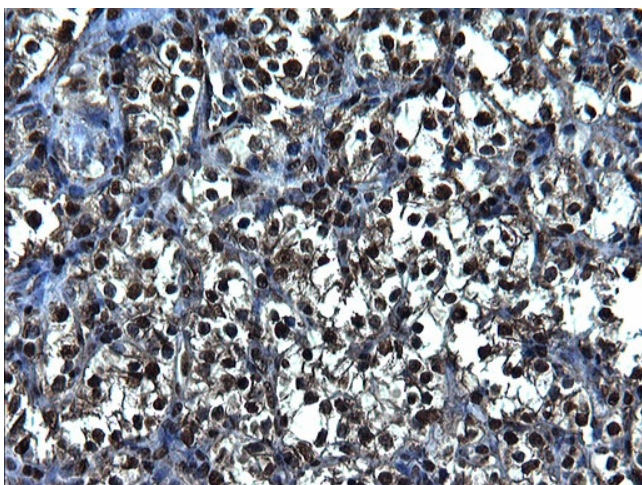


Immunohistochemical staining of paraffin-embedded Adenocarcinoma of Human colon tissue using anti-DEK Rabbit Polyclonal antibody. (TA590653)

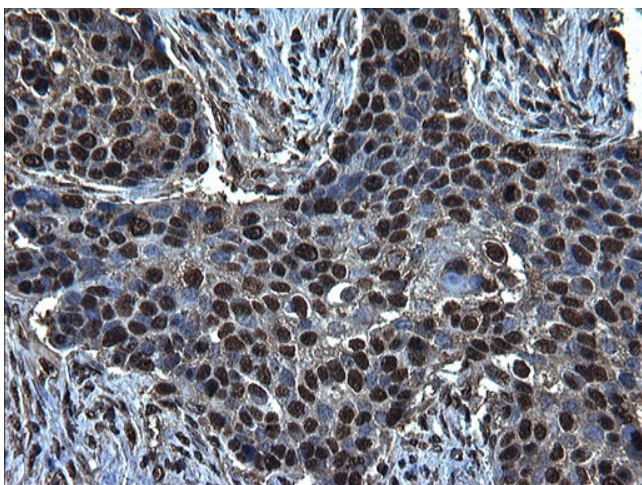


Immunohistochemical staining of paraffin-embedded Human Kidney tissue using anti-DEK Rabbit Polyclonal antibody. (TA590653)

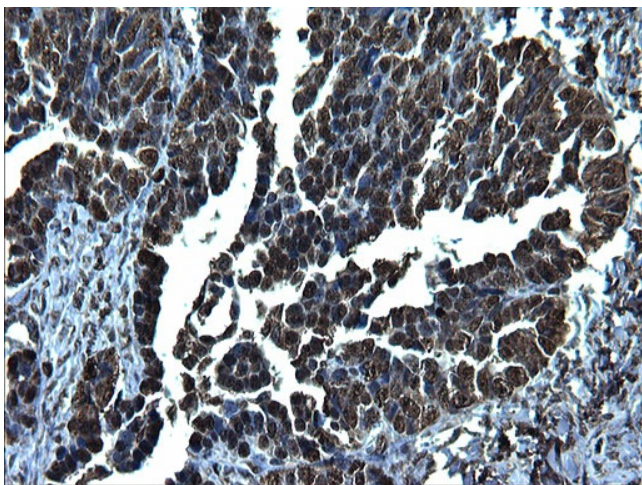




Immunohistochemical staining of paraffin-embedded Carcinoma of Human kidney tissue using anti-DEK Rabbit Polyclonal antibody. (TA590653)



Immunohistochemical staining of paraffin-embedded Carcinoma of Human lung tissue using anti-DEK Rabbit Polyclonal antibody. (TA590653)



Immunohistochemical staining of paraffin-embedded Adenocarcinoma of Human ovary tissue using anti-DEK Rabbit Polyclonal antibody. (TA590653)