

Product datasheet for **TA590651**

AKAP1 Rabbit Polyclonal Antibody

Product data:

Product Type:	Primary Antibodies
Applications:	ELISA, IF, IHC
Recommended Dilution:	ELISA: 1:100-1:2000; IHC: 1:500; IF: 1:125
Reactivity:	Human
Host:	Rabbit
Isotype:	IgG
Clonality:	Polyclonal
Immunogen:	DNA immunization. This antibody is specific for the N Terminus Region of the target protein.
Formulation:	20 mM Potassium Phosphate, 150 mM Sodium Chloride, pH 7.0
Concentration:	0.99mg/ml
Purification:	Purified from mouse ascites fluids or tissue culture supernatant by affinity chromatography (protein A/G)
Conjugation:	Unconjugated
Storage:	Store at -20°C as received.
Stability:	Stable for 12 months from date of receipt.
Gene Name:	A-kinase anchoring protein 1
Database Link:	NP_003479 Entrez Gene 8165 Human Q92667
Background:	The A-kinase anchor proteins (AKAPs) are a group of structurally diverse proteins, which have the common function of binding to the regulatory subunit of protein kinase A (PKA) and confining the holoenzyme to discrete locations within the cell. This gene encodes a member of the AKAP family. The encoded protein binds to type I and type II regulatory subunits of PKA and anchors them to the mitochondrion. This protein is speculated to be involved in the cAMP-dependent signal transduction pathway and in directing RNA to a specific cellular compartment.
Synonyms:	AKAP; AKAP84; AKAP121; AKAP149; D-AKAP1; PPP1R43; PRKA1; SAKAP84; TDRD17

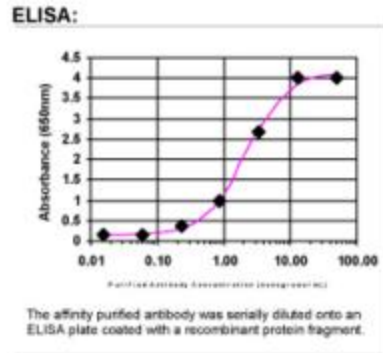


[View online »](#)

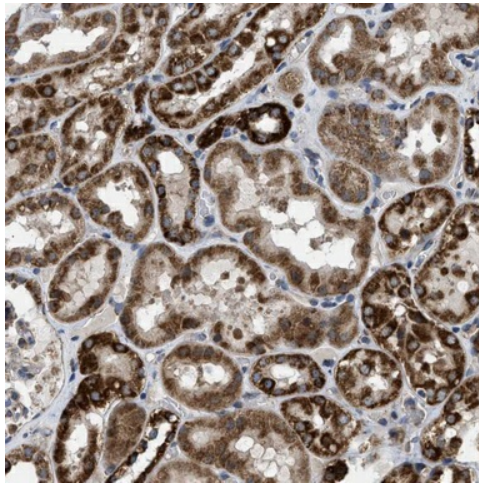
Note: This antibody was generated by SDIX's Genomic Antibody Technology® (GAT). [Learn about GAT](#)

Protein Families: Druggable Genome, Transmembrane

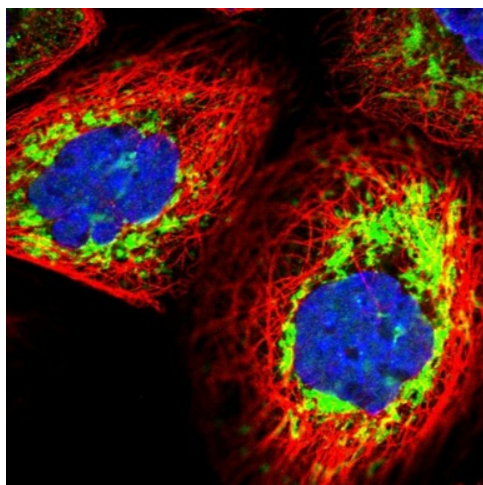
Product images:



ELISA: AKAP1 Antibody



Immunohistochemistry: Human kidney stained with AKAP1 Antibody - Most normal tissues and malignant tissues showed strong cytoplasmic immunoreactivity. Decidual cells in placenta were moderately stained. Bile ducts, renal glomeruli and stromal cells along with some of the malignant lymphomas and renal cancers were weakly stained or negative. Image and statement courtesy of the Human Protein Atlas (HPA) and the presentation of data is for informational purposes only.



Immunofluorescent staining of human cell line A-431 shows positivity in mitochondria. This validation was performed by Protein Atlas and the presentation of data is for informational purposes only.