

Product datasheet for **TA590649**

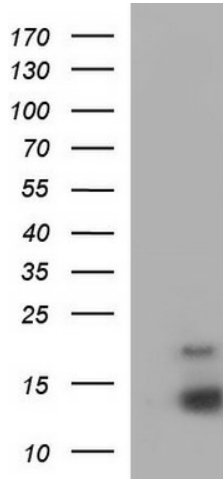
EIF4EBP3 Rabbit Polyclonal Antibody

Product data:

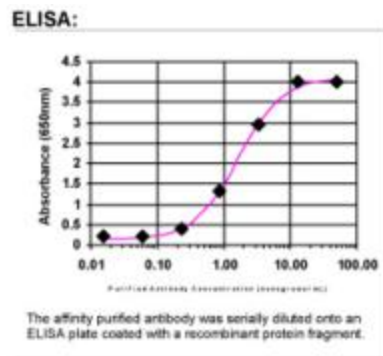
Product Type:	Primary Antibodies
Applications:	ELISA, IHC, WB
Recommended Dilution:	WB 1:20000, IHC 1:150,ELISA 1:100-1:2000
Reactivity:	Human
Host:	Rabbit
Isotype:	IgG
Clonality:	Polyclonal
Immunogen:	DNA immunization. This antibody is specific for the C Terminus Region of the target protein.
Formulation:	20 mM Potassium Phosphate, 150 mM Sodium Chloride, pH 7.0
Concentration:	0.76058 mg/ml
Purification:	Purified from mouse ascites fluids or tissue culture supernatant by affinity chromatography (protein A/G)
Conjugation:	Unconjugated
Storage:	Store at -20°C as received.
Stability:	Stable for 12 months from date of receipt.
Gene Name:	eukaryotic translation initiation factor 4E binding protein 3
Database Link:	NP_003723 Entrez Gene 8637 Human O60516
Background:	This gene encodes a member of the EIF4EBP family which derives its name from proteins that bind to eukaryotic initiation factor 4E and that prevent its assembly into EIF4F. Co-transcription of this gene and the neighboring upstream gene (MASK) generates a transcript (MASK-BP3) which encodes a fusion protein comprised of the MASK protein sequence for the majority of the protein and a different C-terminus due to an alternate reading frame for the EIF4EBP3 segments. [provided by RefSeq]
Synonyms:	4E-BP3; 4EBP3
Note:	This antibody was generated by SDIX's Genomic Antibody Technology® (GAT). Learn about GAT



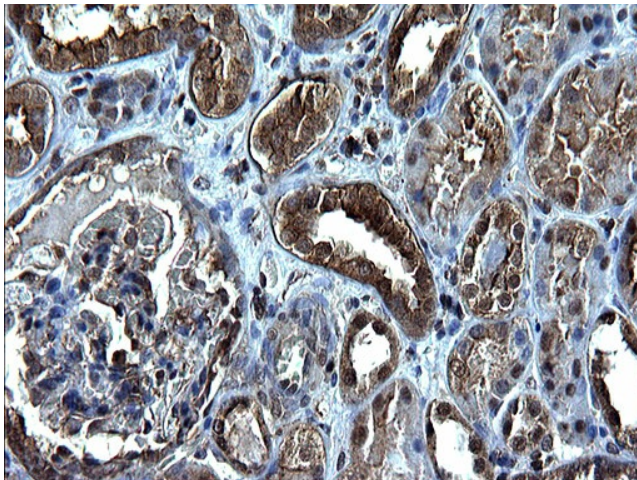
[View online >](#)

Product images:


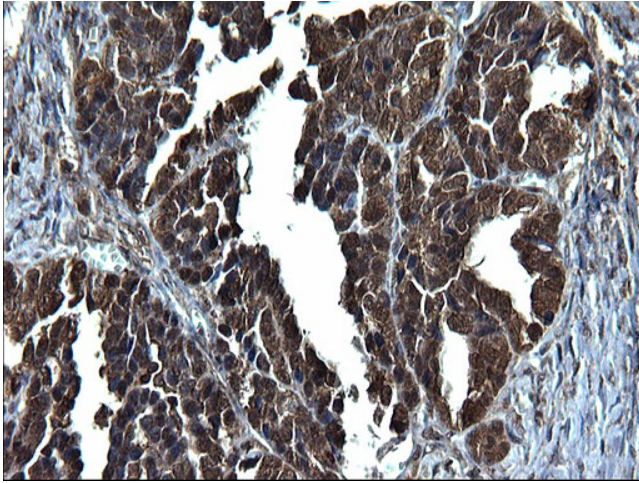
HEK293T cells were transfected with the pCMV6-ENTRY control (Left lane) or pCMV6-ENTRY EIF4EBP3 ([RC210053], Right lane) cDNA for 48 hrs and lysed. Equivalent amounts of cell lysates (5 ug per lane) were separated by SDS-PAGE and immunoblotted with anti-EIF. Positive lysates [LY418472] (100ug) and [LC418472] (20ug) can be purchased separately from OriGene.



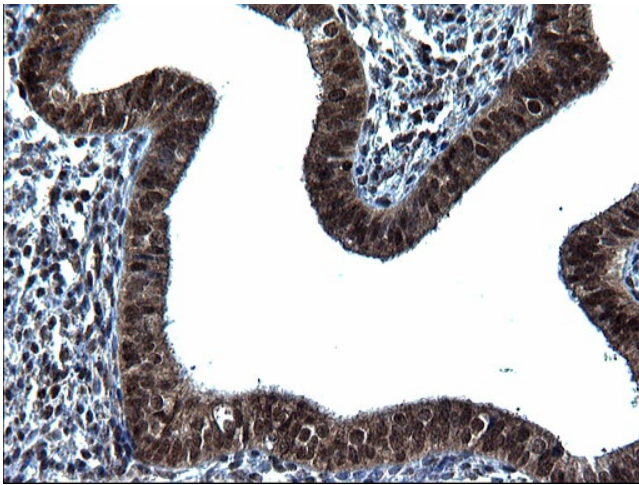
ELISA: EIF4EBP3 Antibody



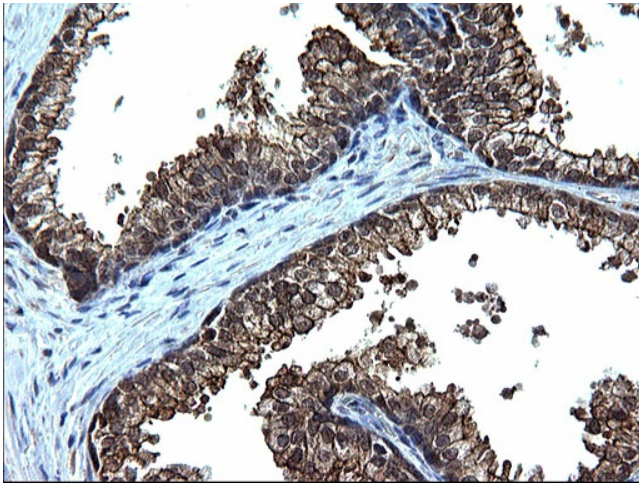
Immunohistochemical staining of paraffin-embedded Human Kidney tissue using anti-EIF4EBP3 rabbit polyclonal antibody. (TA590649)



Immunohistochemical staining of paraffin-embedded Adenocarcinoma of Human ovary tissue using anti-EIF4EBP3 rabbit polyclonal antibody. (TA590649)



Immunohistochemical staining of paraffin-embedded Human endometrium tissue using anti-EIF4EBP3 rabbit polyclonal antibody. (TA590649)



Immunohistochemical staining of paraffin-embedded Human prostate tissue using anti-EIF4EBP3 rabbit polyclonal antibody. (TA590649)