

## Product datasheet for **TA590647**

### ADAM9 Rabbit Polyclonal Antibody

#### Product data:

Product Type:	Primary Antibodies
Applications:	ELISA
Recommended Dilution:	WB: 1:5000-1:20000; ELISA: 1:100-1:2000; IHC: 1:10-1:2000; IHC-P 1:250-1:2000
Reactivity:	Human, Mouse
Host:	Rabbit
Isotype:	IgG
Clonality:	Polyclonal
Immunogen:	DNA immunization. This antibody is specific for the N Terminus Region of the target protein.
Formulation:	20 mM Potassium Phosphate, 150 mM Sodium Chloride, pH 7.0
Concentration:	1.08mg/ml
Purification:	Purified from mouse ascites fluids or tissue culture supernatant by affinity chromatography (protein A/G)
Conjugation:	Unconjugated
Storage:	Store at -20°C as received.
Stability:	Stable for 12 months from date of receipt.
Gene Name:	ADAM metallopeptidase domain 9
Database Link:	<a href="#">NP_003807</a> <a href="#">Entrez Gene 11502 Mouse</a> <a href="#">Entrez Gene 8754 Human</a> <a href="#">Q13443</a>
Background:	This gene encodes a member of the ADAM (a disintegrin and metalloprotease domain) family. Members of this family are membrane-anchored proteins structurally related to snake venom disintegrins, and have been implicated in a variety of biological processes involving cell-cell and cell-matrix interactions, including fertilization, muscle development, and neurogenesis. The protein encoded by this gene interacts with SH3 domain-containing proteins, binds mitotic arrest deficient 2 beta protein, and is also involved in TPA-induced ectodomain shedding of membrane-anchored heparin-binding EGF-like growth factor. Two alternative splice variants have been identified, encoding distinct isoforms.
Synonyms:	CORD9; MCMP; MDC9; Mltng

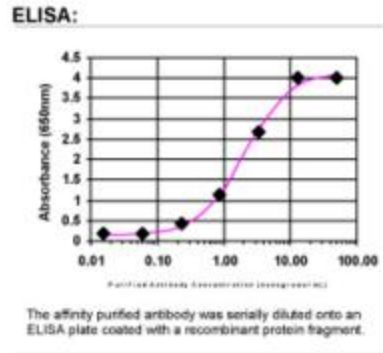


[View online »](#)

**Note:** This antibody was generated by SDIX's Genomic Antibody Technology® (GAT). [Learn about GAT](#)

**Protein Families:** Druggable Genome, Protease, Secreted Protein, Transmembrane

**Product images:**



ELISA: ADAM9 Antibody