

Product datasheet for **TA590632**

Dishevelled 3 (DVL3) Rabbit Polyclonal Antibody

Product data:

Product Type:	Primary Antibodies
Applications:	ELISA
Recommended Dilution:	WB: 1:5000-1:20000; ELISA: 1:100-1:2000; IHC: 1:10-1:2000; IHC-P 1:250-1:2000
Reactivity:	Human
Host:	Rabbit
Isotype:	IgG
Clonality:	Polyclonal
Immunogen:	DNA immunization. This antibody is specific for the C Terminus Region of the target protein.
Formulation:	20 mM Potassium Phosphate, 150 mM Sodium Chloride, pH 7.0
Concentration:	1.3mg/ml
Purification:	Purified from mouse ascites fluids or tissue culture supernatant by affinity chromatography (protein A/G)
Conjugation:	Unconjugated
Storage:	Store at -20°C as received.
Stability:	Stable for 12 months from date of receipt.
Gene Name:	dishevelled segment polarity protein 3
Database Link:	NP_004414 Entrez Gene 1857 Human Q92997



[View online »](#)

Background:

The human DVL-3 gene encodes a predicted 716 amino acid protein which exhibits 98% amino acid identity with mouse Dsh-3 and 49% with Drosophila Dsh. Dsh-3 was mapped to 3q27. The expression of Dsh-3 mRNA was detected in 30 human cell lines and 2 primary cell cultures. Dsh-3 mRNA was detected in normal human breast tissues and tumors. Statistically, there was no difference in Dsh-3 mRNA level between normal breast tissues and tumors. In human colorectal samples, Dsh-3 was expressed equally in matched normal tissues, polyps and tumors. The data indicates that Dsh-3 is widely expressed in human cells and may have a widespread role in signal transduction (1). Results indicate that the human dishevelled genes constitute a multigene family and that Dsh 3 proteins are highly conserved among metazoans.

Synonyms:

DRS3

Note:

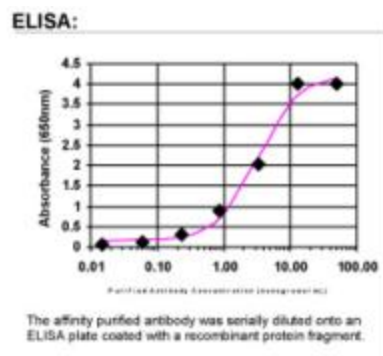
This antibody was generated by SDIX's Genomic Antibody Technology® (GAT). [Learn about GAT](#)

Protein Families:

Druggable Genome, ES Cell Differentiation/IPS

Protein Pathways:

Basal cell carcinoma, Colorectal cancer, Melanogenesis, Notch signaling pathway, Pathways in cancer, Wnt signaling pathway

Product images:

ELISA: Dishevelled 3 Antibody