

Product datasheet for **TA590631**

Eph receptor A2 (EPHA2) Rabbit Polyclonal Antibody

Product data:

Product Type:	Primary Antibodies
Applications:	ELISA, WB
Recommended Dilution:	WB 1:5000~20000, ELISA 1:100-1:2000
Reactivity:	Human
Host:	Rabbit
Isotype:	IgG
Clonality:	Polyclonal
Immunogen:	DNA immunization. This antibody is specific for the N Terminus Region of the target protein.
Formulation:	20 mM Potassium Phosphate, 150 mM Sodium Chloride, pH 7.0
Concentration:	0.69mg/ml
Purification:	Purified from mouse ascites fluids or tissue culture supernatant by affinity chromatography (protein A/G)
Conjugation:	Unconjugated
Storage:	Store at -20°C as received.
Stability:	Stable for 12 months from date of receipt.
Gene Name:	EPH receptor A2
Database Link:	NP_004422 Entrez Gene 1969 Human P29317
Background:	This gene belongs to the ephrin receptor subfamily of the protein-tyrosine kinase family. EPH and EPH-related receptors have been implicated in mediating developmental events, particularly in the nervous system. Receptors in the EPH subfamily typically have a single kinase domain and an extracellular region containing a Cys-rich domain and 2 fibronectin type III repeats. The ephrin receptors are divided into 2 groups based on the similarity of their extracellular domain sequences and their affinities for binding ephrin-A and ephrin-B ligands. This gene encodes a protein that binds ephrin-A ligands.
Synonyms:	ARCC2; CTPA; CTPP1; CTRCT6; ECK



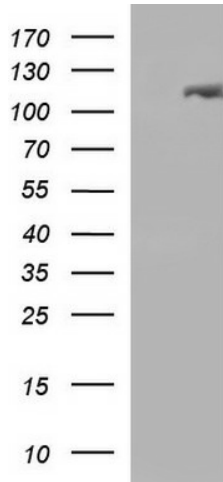
[View online »](#)

Note: This antibody was generated by SDIX's Genomic Antibody Technology® (GAT). [Learn about GAT](#)

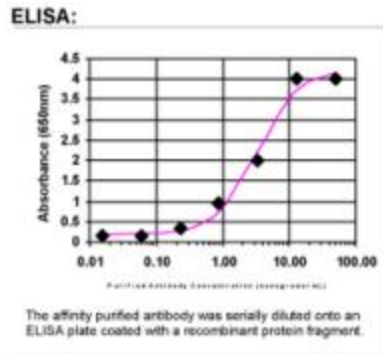
Protein Families: Druggable Genome, Protein Kinase, Transmembrane

Protein Pathways: Axon guidance

Product images:



HEK293T cells were transfected with the pCMV6-ENTRY control (Cat# [PS100001], Left lane) or pCMV6-ENTRY EPHA2 (Cat# [RC205725], Right lane) cDNA for 48 hrs and lysed. Equivalent amounts of cell lysates (5 ug per lane) were separated by SDS-PAGE and immunoblotted with anti-EPHA2 (Cat# TA590631). Positive lysates [LY417985] (100ug) and [LC417985] (20ug) can be purchased separately from OriGene.



ELISA: Eph receptor A2 Antibody