

Product datasheet for **TA590630**

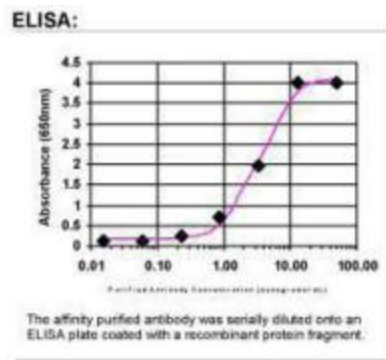
Glutamyl Prolyl tRNA synthetase (EPRS) Rabbit Polyclonal Antibody

Product data:

Product Type:	Primary Antibodies
Applications:	ELISA
Recommended Dilution:	WB: 1:5000-1:20000; ELISA: 1:100-1:2000
Reactivity:	Human
Host:	Rabbit
Isotype:	IgG
Clonality:	Polyclonal
Immunogen:	DNA immunization. This antibody is specific for the C Terminus Region of the target protein.
Formulation:	20 mM Potassium Phosphate, 150 mM Sodium Chloride, pH 7.0
Concentration:	0.82263 mg/ml
Purification:	Purified from mouse ascites fluids or tissue culture supernatant by affinity chromatography (protein A/G)
Conjugation:	Unconjugated
Storage:	Store at -20°C as received.
Stability:	Stable for 12 months from date of receipt.
Gene Name:	glutamyl-prolyl-tRNA synthetase 1
Database Link:	NP_004437 Entrez Gene 2058 Human P07814
Background:	Glutamyl Prolyl tRNA synthetase (EPRS) is a component of ARS multi complex. EPRS is released and phosphorylated by IFN stimulation and forms a complex with GAIT.
Synonyms:	EARS; GLUPRORS; PARS; PIG32; QARS; QPRS
Note:	This antibody was generated by SDIX's Genomic Antibody Technology® (GAT). Learn about GAT
Protein Families:	Druggable Genome
Protein Pathways:	Aminoacyl-tRNA biosynthesis, Metabolic pathways, Porphyrin and chlorophyll metabolism


[View online »](#)

Product images:



ELISA: EPRS Antibody