

Product datasheet for **TA590626**

NAP1L3 Rabbit Polyclonal Antibody

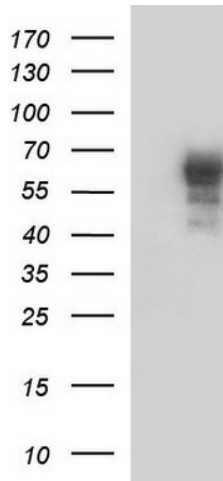
Product data:

Product Type:	Primary Antibodies
Applications:	ELISA, IHC, WB
Recommended Dilution:	WB 1:20000, IHC 1:150,ELISA 1:100-1:2000
Reactivity:	Human
Host:	Rabbit
Isotype:	IgG
Clonality:	Polyclonal
Immunogen:	DNA immunization. This antibody is specific for the Middle Region of the target protein.
Formulation:	20 mM Potassium Phosphate, 150 mM Sodium Chloride, pH 7.0
Concentration:	0.76496 mg/ml
Purification:	Purified from mouse ascites fluids or tissue culture supernatant by affinity chromatography (protein A/G)
Conjugation:	Unconjugated
Storage:	Store at -20°C as received.
Stability:	Stable for 12 months from date of receipt.
Gene Name:	nucleosome assembly protein 1 like 3
Database Link:	NP_004529 Entrez Gene 4675 Human Q99457
Background:	This gene encodes a member of the nucleosome assembly protein (NAP) family. It is linked closely to a region of genes responsible for several X-linked mental retardation syndromes. Alternatively spliced transcript variants have been found for this gene, but the biological validity of the variants has not been determined. [provided by RefSeq]
Synonyms:	MB20; NPL3
Note:	This antibody was generated by SDIX's Genomic Antibody Technology® (GAT). Learn about GAT

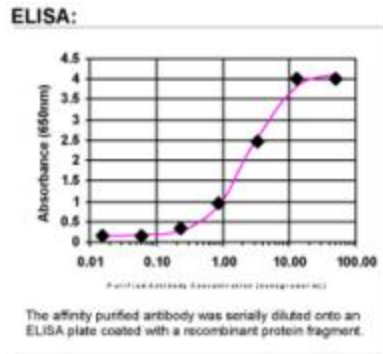


[View online »](#)

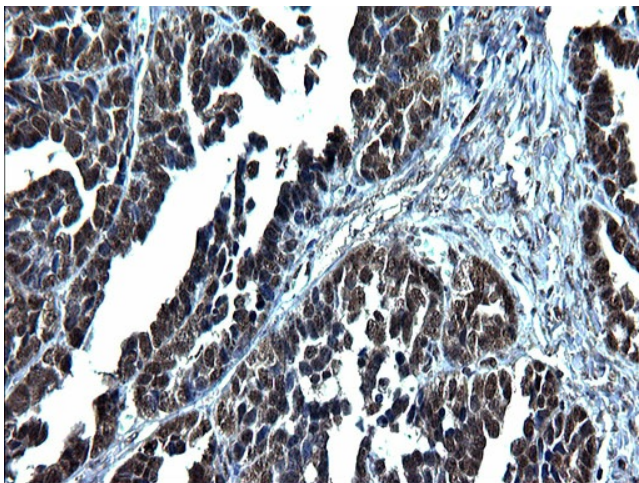
Product images:



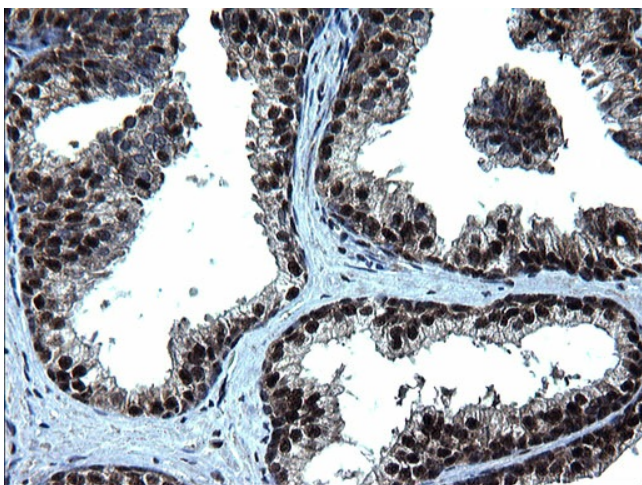
HEK293T cells were transfected with the pCMV6-ENTRY control (Left lane) or pCMV6-ENTRY NAP1L3 ([RC205297], Right lane) cDNA for 48 hrs and lysed. Equivalent amounts of cell lysates (5 ug per lane) were separated by SDS-PAGE and immunoblotted with anti-NAP1L. Positive lysates [LY417930] (100ug) and [LC417930] (20ug) can be purchased separately from OriGene.



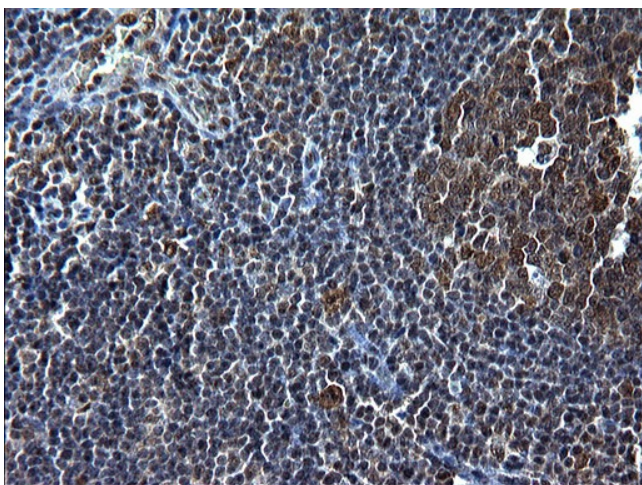
ELISA: NAP1L3 Antibody



Immunohistochemical staining of paraffin-embedded Adenocarcinoma of Human ovary tissue using anti-NAP1L3 rabbit polyclonal antibody. (TA590626)



Immunohistochemical staining of paraffin-embedded Human prostate tissue using anti-NAP1L3 rabbit polyclonal antibody. (TA590626)



Immunohistochemical staining of paraffin-embedded Human lymph node tissue using anti-NAP1L3 rabbit polyclonal antibody. (TA590626)