

Product datasheet for **TA590624**

XPC Rabbit Polyclonal Antibody

Product data:

Product Type:	Primary Antibodies
Applications:	ELISA
Recommended Dilution:	ELISA: 1:100-1:2000
Reactivity:	Human
Host:	Rabbit
Isotype:	IgG
Clonality:	Polyclonal
Immunogen:	DNA immunization. This antibody is specific for the N Terminus Region of the target protein.
Formulation:	20 mM Potassium Phosphate, 150 mM Sodium Chloride, pH 7.0
Concentration:	0.82mg/ml
Purification:	Purified from mouse ascites fluids or tissue culture supernatant by affinity chromatography (protein A/G)
Conjugation:	Unconjugated
Storage:	Store at -20°C as received.
Stability:	Stable for 12 months from date of receipt.
Gene Name:	XPC complex subunit, DNA damage recognition and repair factor
Database Link:	NP_004619 Entrez Gene 7508 Human Q01831



[View online »](#)

Background:

Human XPC (Xeroderma pigmentosum group C) is a member of a family of proteins that has been shown to be involved in the repair of DNA via the nucleotide excision repair (NER) pathway. Specifically, XPC is believed to be a part of a heteromeric protein complex that is involved in the recognition of the DNA lesions during global genomic repair but not transcription-coupled repair. XPC may play a part in DNA damage recognition and/or in altering chromatin structure to allow access by damage processing enzymes. Defects in XPC are a cause of xeroderma pigmentosum complementation group C (XPC); also known as xeroderma pigmentosum III (XP3). XPC is a rare human autosomal recessive disease characterized by solar sensitivity, high predisposition for developing cancers on areas exposed to sunlight and, in some cases, neurological abnormalities.

Synonyms:

p125; RAD4; XP3; XPCC

Note:

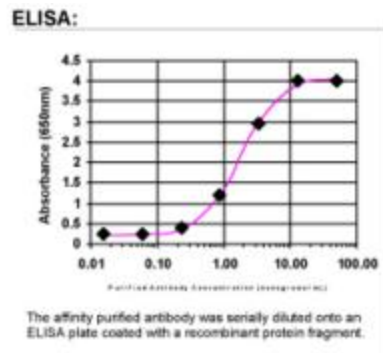
This antibody was generated by SDIX's Genomic Antibody Technology® (GAT). [Learn about GAT](#)

Protein Families:

Druggable Genome

Protein Pathways:

Nucleotide excision repair

Product images:

ELISA: XPC Antibody