

Product datasheet for **TA590610**

ELK1 Rabbit Polyclonal Antibody

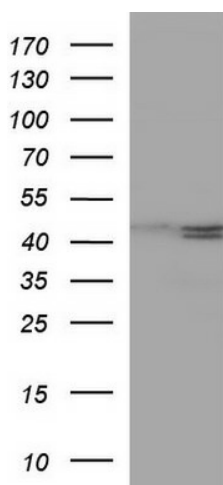
Product data:

Product Type:	Primary Antibodies
Applications:	ELISA, IHC, WB
Recommended Dilution:	WB 1:20000, IHC 1:150, ELISA 1:100-1:2000
Reactivity:	Human
Host:	Rabbit
Isotype:	IgG
Clonality:	Polyclonal
Immunogen:	DNA immunization. This antibody is specific for the C Terminus Region of the target protein.
Formulation:	20 mM Potassium Phosphate, 150 mM Sodium Chloride, pH 7.0
Concentration:	0.82336 mg/ml
Purification:	Purified from mouse ascites fluids or tissue culture supernatant by affinity chromatography (protein A/G)
Conjugation:	Unconjugated
Storage:	Store at -20°C as received.
Stability:	Stable for 12 months from date of receipt.
Gene Name:	ETS transcription factor ELK1
Database Link:	NP_005220 Entrez Gene 2002 Human P19419

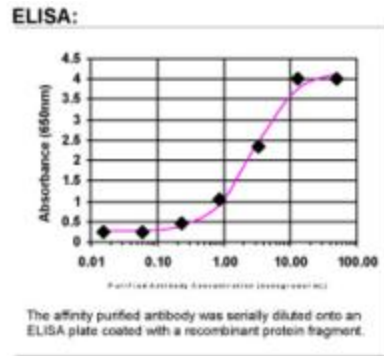


[View online »](#)

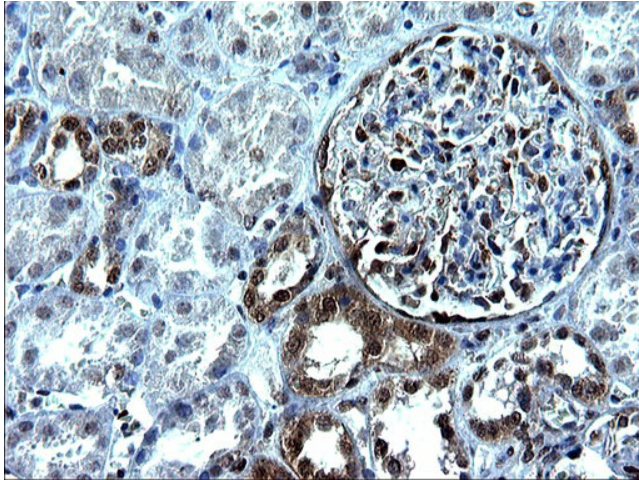
- Background:** The transcription factor ELK1 is a family member of the ETS oncogene family and of the ternary complex factor (TCF) subfamily, which is located on chromosome Xp11.2 and stimulates transcription. It binds to purine-rich DNA sequences. Proteins of the TCF subfamily form a ternary complex by binding to the serum response factor and the serum response element in the promoter of the c-fos proto-oncogene. The protein encoded by this gene is a nuclear target for the ras-raf-MAPK signaling cascade. ELK1 is phosphorylated by MAP kinase pathways at a cluster of S/T motifs at its C terminus. It appears to be a direct target of activated MAP kinase. Biochemical studies indicate that ELK1 is a good substrate for MAP kinase; the kinetics of ELK1 phosphorylation and activation correlate with MAP kinase activity, and interfering mutants of MAP kinase block ELK1 activation *in vivo*. More recent studies have shown that ELK1 is also a target of the Stress Activated Kinase SAPK/JNK. Phosphorylation of ELK1 has also been implicated in synaptic plasticity in the adult hippocampus.
- Synonyms:** ELK1; ELK1 protein; ETS-like gene 1; member of ETS oncogene family; OTTHUMP00000023224; OTTHUMP00000023225
- Note:** This antibody was generated by SDIX's Genomic Antibody Technology® (GAT). [Learn about GAT](#)
- Protein Families:** Druggable Genome, Transcription Factors
- Protein Pathways:** Endometrial cancer, ErbB signaling pathway, Focal adhesion, GnRH signaling pathway, Insulin signaling pathway, MAPK signaling pathway, Prion diseases

Product images:

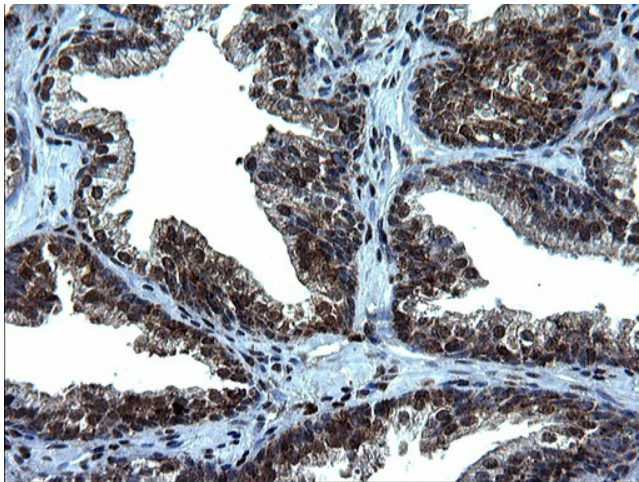
HEK293T cells were transfected with the pCMV6-ENTRY control (Cat# [PS100001], Left lane) or pCMV6-ENTRY ELK1 (Cat# [RC208921], Right lane) cDNA for 48 hrs and lysed. Equivalent amounts of cell lysates (5 ug per lane) were separated by SDS-PAGE and immunoblotted with anti-ELK1 (Cat# TA590610). Positive lysates [LY417435] (100ug) and [LC417435] (20ug) can be purchased separately from OriGene.



ELISA: ELK1 Antibody



Immunohistochemical staining of paraffin-embedded Human Kidney tissue using anti-ELK1 rabbit polyclonal antibody. (TA590610)



Immunohistochemical staining of paraffin-embedded Human prostate tissue using anti-ELK1 rabbit polyclonal antibody. (TA590610)