

## Product datasheet for **TA590609**

### E2F1 Rabbit Polyclonal Antibody

#### Product data:

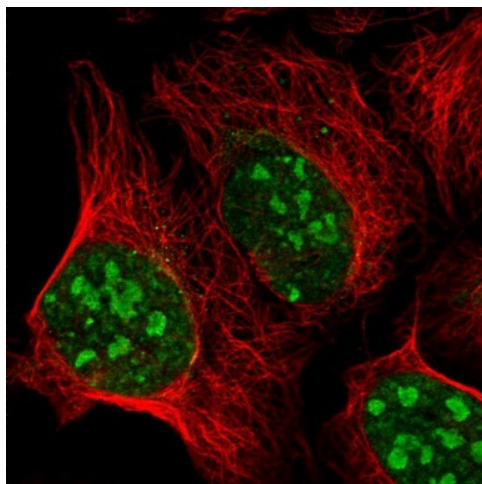
Product Type:	Primary Antibodies
Applications:	ELISA, IF, IHC
Recommended Dilution:	ELISA: 1:100-1:2000; IHC: 1:250; IF: 1:62
Reactivity:	Human
Host:	Rabbit
Isotype:	IgG
Clonality:	Polyclonal
Immunogen:	DNA immunization. This antibody is specific for the C Terminus Region of the target protein.
Formulation:	20 mM Potassium Phosphate, 150 mM Sodium Chloride, pH 7.0
Concentration:	1.29mg/ml
Purification:	Purified from mouse ascites fluids or tissue culture supernatant by affinity chromatography (protein A/G)
Conjugation:	Unconjugated
Storage:	Store at -20°C as received.
Stability:	Stable for 12 months from date of receipt.
Gene Name:	E2F transcription factor 1
Database Link:	<a href="#">NP_005216</a> <a href="#">Entrez Gene 1869 Human</a> <a href="#">Q01094</a>
Background:	E2F's are DNA binding proteins, which associate with negative regulators, such as the retinoblastoma p107 protein, resulting in an altered rate of gene transcription. E2F1 is proposed to be involved in several cellular processes that range from tumor suppressor, cell progression and oncogenesis. E2F1 overexpression can also drive cells into apoptosis.
Synonyms:	E2F-1; RBAP1; RBBP3; RBP3
Note:	This antibody was generated by SDIX's Genomic Antibody Technology® (GAT). <a href="#">Learn about GAT</a>
Protein Families:	Druggable Genome, Transcription Factors



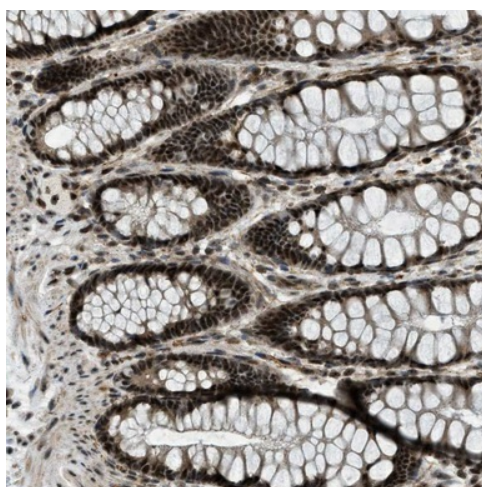
[View online »](#)

**Protein Pathways:** Bladder cancer, Cell cycle, Chronic myeloid leukemia, Glioma, Melanoma, Non-small cell lung cancer, Pancreatic cancer, Pathways in cancer, Prostate cancer, Small cell lung cancer

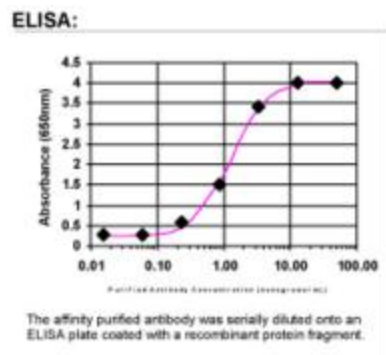
**Product images:**



Immunofluorescent staining of human cell line U-2 OS shows positivity in nucleus & nucleoli. This validation was performed by Protein Atlas and the presentation of data is for informational purposes only.



Immunohistochemical staining of human colon shows strong nuclear positivity in glandular cells. This validation was performed by Protein Atlas and the presentation of data is for informational purposes only.



ELISA: E2F1 Antibody