

## Product datasheet for **TA590599**

### KIFC3 Rabbit Polyclonal Antibody

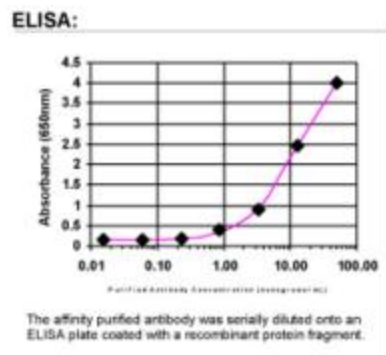
#### Product data:

Product Type:	Primary Antibodies
Applications:	ELISA
Recommended Dilution:	WB: 1:5000-1:20000; ELISA: 1:100-1:2000
Reactivity:	Human
Host:	Rabbit
Isotype:	IgG
Clonality:	Polyclonal
Immunogen:	DNA immunization. This antibody is specific for the N Terminus Region of the target protein.
Formulation:	20 mM Potassium Phosphate, 150 mM Sodium Chloride, pH 7.0
Concentration:	0.97299 mg/ml
Purification:	Purified from mouse ascites fluids or tissue culture supernatant by affinity chromatography (protein A/G)
Conjugation:	Unconjugated
Storage:	Store at -20°C as received.
Stability:	Stable for 12 months from date of receipt.
Gene Name:	kinesin family member C3
Database Link:	<a href="#">NP_005541</a> <a href="#">Entrez Gene 3801 Human</a> <a href="#">Q9BVG8</a>
Background:	KIFC3 is a minus-end microtubule-dependent motor protein. Involved in apically targeted transport (By similarity).
Synonyms:	DKFZp686D23201; FLJ34694
Note:	This antibody was generated by SDIX's Genomic Antibody Technology® (GAT). <a href="#">Learn about GAT</a>
Protein Families:	Druggable Genome



[View online »](#)

## Product images:



ELISA: KIFC3 Antibody