

## Product datasheet for **TA590598**

### LIM1 (LHX1) Rabbit Polyclonal Antibody

#### Product data:

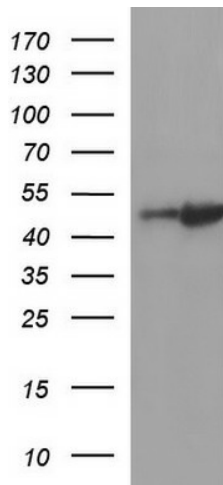
Product Type:	Primary Antibodies
Applications:	ELISA, IHC, WB
Recommended Dilution:	WB 1:5000~20000, IHC 1:150,ELISA 1:100-1:2000
Reactivity:	Human, Monkey, Mouse
Host:	Rabbit
Isotype:	IgG
Clonality:	Polyclonal
Immunogen:	DNA immunization. This antibody is specific for the C Terminus Region of the target protein.
Formulation:	20 mM Potassium Phosphate, 150 mM Sodium Chloride, pH 7.0
Concentration:	1 mg/ml
Purification:	Purified from mouse ascites fluids or tissue culture supernatant by affinity chromatography (protein A/G)
Conjugation:	Unconjugated
Storage:	Store at -20°C as received.
Stability:	Stable for 12 months from date of receipt.
Gene Name:	LIM homeobox 1
Database Link:	<a href="#">NP_005559</a> <a href="#">Entrez Gene 16869 Mouse</a> <a href="#">Entrez Gene 714101 Monkey</a> <a href="#">Entrez Gene 3975 Human</a> <a href="#">P48742</a>
Background:	This gene encodes a member of a large protein family which contains the LIM domain, a unique cysteine-rich zinc-binding domain. The encoded protein may function as a transcriptional regulator and be involved in control of differentiation and development of neural and lymphoid cells. A similar protein in mice is an essential regulator of the vertebrate head organizer.
Synonyms:	LIM-1; LIM1
Note:	This antibody was generated by SDIX's Genomic Antibody Technology® (GAT). <a href="#">Learn about GAT</a>



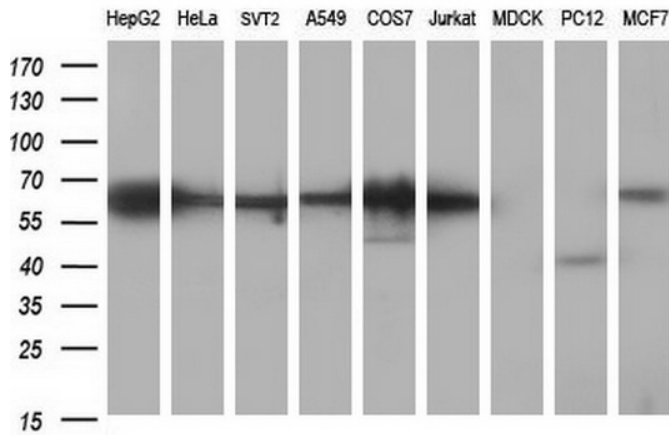
[View online »](#)

Protein Families: ES Cell Differentiation/IPS, Transcription Factors

**Product images:**



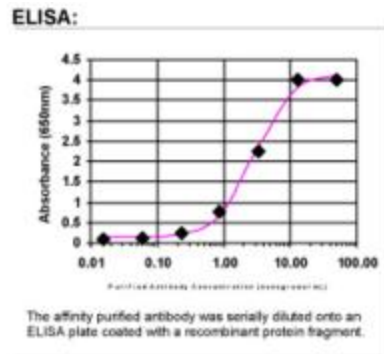
HEK293T cells were transfected with the pCMV6-ENTRY control (Left lane) or pCMV6-ENTRY LHX1 ([RC210977], Right lane) cDNA for 48 hrs and lysed. Equivalent amounts of cell lysates (5 ug per lane) were separated by SDS-PAGE and immunoblotted with anti-LHX1. Positive lysates [LY417207] (100ug) and [LC417207] (20ug) can be purchased separately from OriGene.



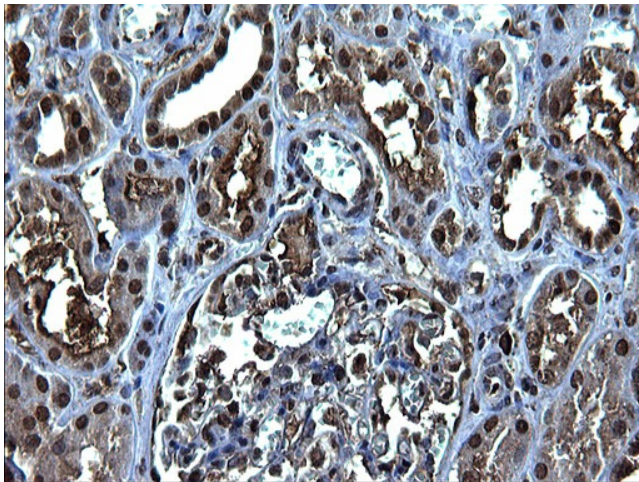
Western blot analysis of extracts (35ug) from 9 different cell lines by using anti-LHX1 polyclonal antibody (HepG2: human; HeLa: human; SVT2: mouse; A549: human; COS7: monkey; Jurkat: human; MDCK: canine; PC12: rat; MCF7: human).



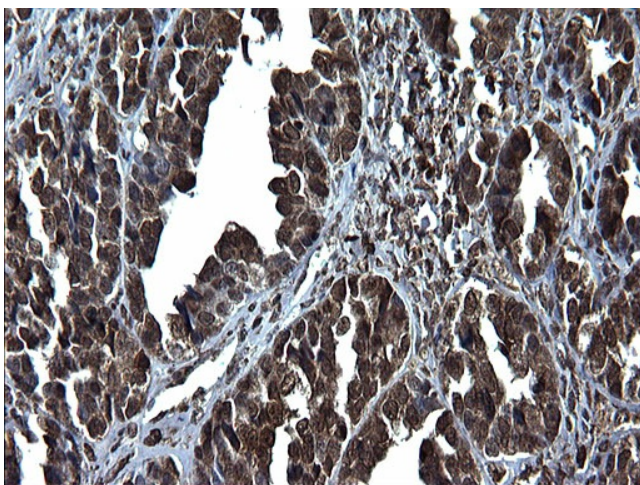
Western Blot: LIM1 Antibody - Western Blot was performed using affinity purified SEQer LHX1 antibody, aa (267-366) antibody. The lanes contain 5-30ug of a whole cell extract. Final concentration of antibodies = 0.1ug/ml (1:10,000 dilution). The blot was probed overnight with the SEQer LHX1 antibody, aa (267-366) antibody. Blot was then washed according to protocol and probed with goat-anti-Rabbit-HRP conjugate at 1:5000 dilution, washed and developed using chemiluminescence (film exposure 5-30sec). The protein was detected as represented by the band shown.



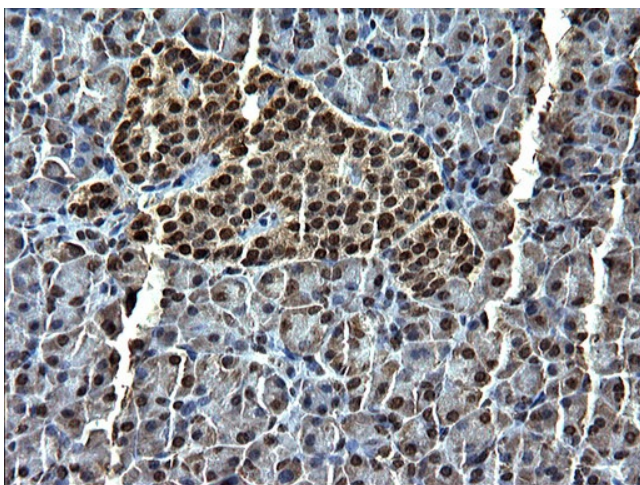
ELISA: LIM1 Antibody



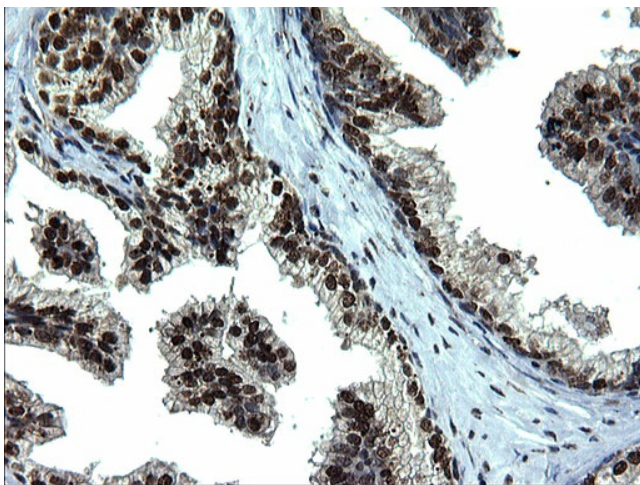
Immunohistochemical staining of paraffin-embedded Human Kidney tissue using anti-LHX1 Rabbit Polyclonal antibody. (TA590598)



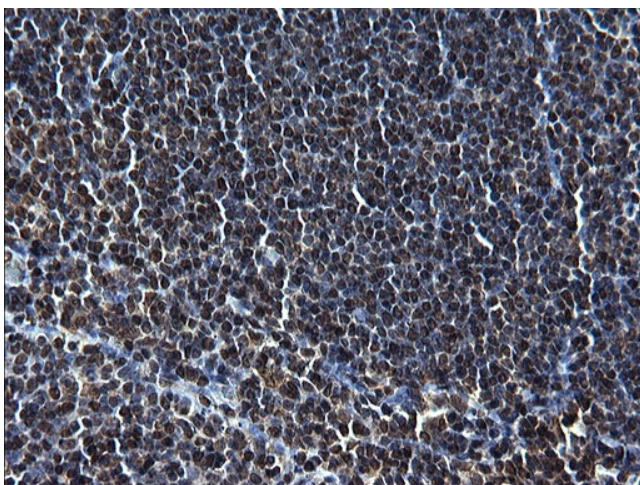
Immunohistochemical staining of paraffin-embedded Adenocarcinoma of Human ovary tissue using anti-LHX1 Rabbit Polyclonal antibody. (TA590598)



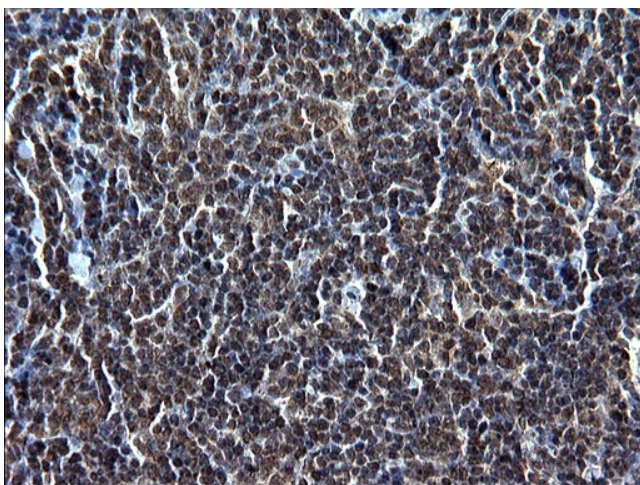
Immunohistochemical staining of paraffin-embedded Human pancreas tissue using anti-LHX1 Rabbit Polyclonal antibody. (TA590598)



Immunohistochemical staining of paraffin-embedded Human prostate tissue using anti-LHX1 Rabbit Polyclonal antibody. (TA590598)



Immunohistochemical staining of paraffin-embedded Human lymph node tissue using anti-LHX1 Rabbit Polyclonal antibody. (TA590598)



Immunohistochemical staining of paraffin-embedded Human lymphoma tissue using anti-LHX1 Rabbit Polyclonal antibody. (TA590598)