

## Product datasheet for **TA590593**

### OLIG2 Rabbit Polyclonal Antibody

#### Product data:

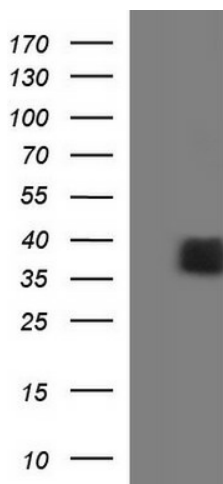
Product Type:	Primary Antibodies
Applications:	IF, IHC, WB
Recommended Dilution:	WB 1:20000, ELISA 1:100-1:2000
Reactivity:	Human
Host:	Rabbit
Isotype:	IgG
Clonality:	Polyclonal
Immunogen:	DNA immunization. This antibody was made against a protein fragment from the N Terminus Region
Formulation:	20 mM Potassium Phosphate, 150 mM Sodium Chloride, pH 7.0
Concentration:	0.9mg/ml
Purification:	Purified from mouse ascites fluids or tissue culture supernatant by affinity chromatography (protein A/G)
Conjugation:	Unconjugated
Storage:	Store at -20°C as received.
Stability:	Stable for 12 months from date of receipt.
Gene Name:	oligodendrocyte transcription factor 2
Database Link:	<a href="#">NP_005797</a> <a href="#">Entrez Gene 10215 Human</a> <a href="#">Q13516</a>
Background:	Olig2 (oligodendrocyte transcription factor 2) is required for oligodendrocyte and motor neuron specification in the spinal cord, as well as for the development of somatic motor neurons in the hindbrain. It cooperates with OLIG1 to establish the pMN domain of the embryonic neural tube. It is an antagonist of V2 interneuron and of NKX2-2-induced V3 interneuron development.
Synonyms:	BHLHB1; bHLHe19; OLIGO2; PRKCBP2; RACK17
Note:	This antibody was generated by SDIX's Genomic Antibody Technology® (GAT). <a href="#">Learn about GAT</a>



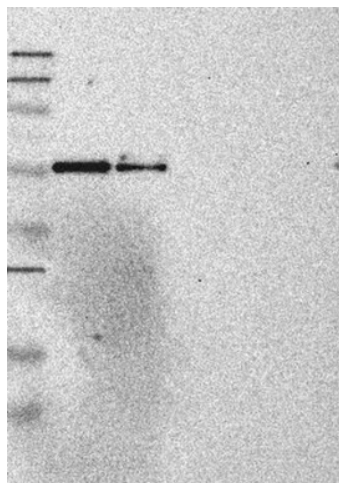
[View online »](#)

Protein Families: Druggable Genome, Transcription Factors

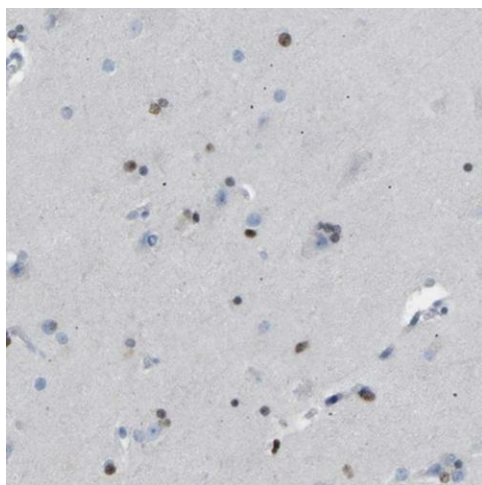
**Product images:**



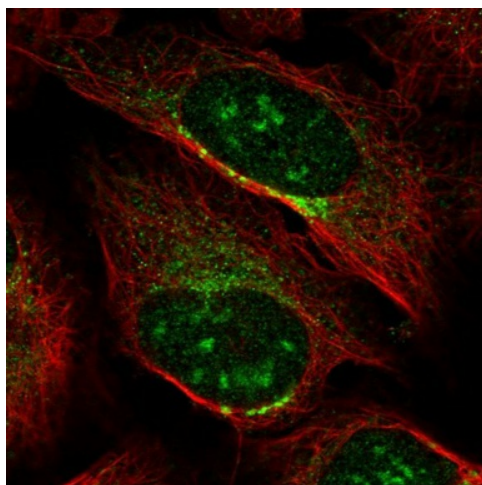
HEK293T cells were transfected with the pCMV6-ENTRY control (Cat# [PS100001], Left lane) or pCMV6-ENTRY OLIG2 (Cat# [RC208209], Right lane) cDNA for 48 hrs and lysed. Equivalent amounts of cell lysates (5 ug per lane) were separated by SDS-PAGE and immunoblotted with anti-OLIG2 (Cat# TA590593). Positive lysates [LY417055] (100ug) and [LC417055] (20ug) can be purchased separately from OriGene.



Lane 1: Marker [kDa] 250, 130, 95, 72, 55, 36, 28, 17, 11; Lane 2: RT-4; Lane 3: U-251 MG; Lane 4: Human Plasma; Lane 5: Liver; Lane 6: Tonsil This validation was performed by Protein Atlas and the presentation of data is for informational purposes only.



Immunohistochemical staining of human cerebral cortex shows strong nuclear positivity in a subset of glial cells. This validation was performed by Protein Atlas and the presentation of data is for informational purposes only. Heat-induced epitope retrieval by EDTA solution buffer pH 8.0 at 120°C for 3 min.



Immunofluorescent staining of human cell line U-2 OS shows positivity in nucleoli & golgi apparatus. This validation was performed by Protein Atlas and the presentation of data is for informational purposes only.